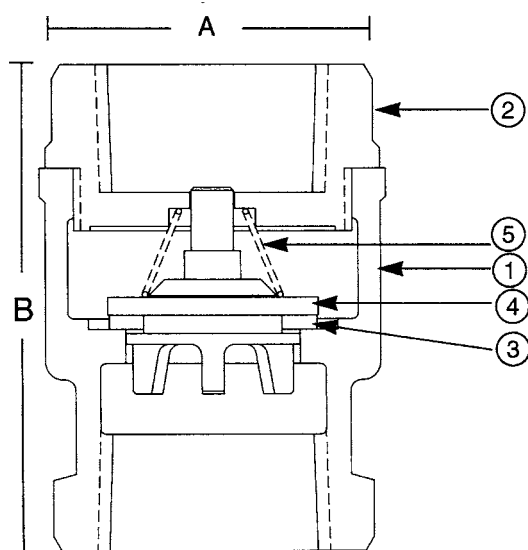


# 548B/548T 3/8"-2"

**Bronze Lift Check Valve**  
**250 WOG †**  
**Spring Loaded • Threaded Ends**  
**Buna (B) or TFE (T)**



**Do not use for reciprocating air compressor service.**

**Note 1:** Not intended for use in potable water.

**Note 2:** Check Valves may be installed in both the horizontal and vertical lines with upward flow or in any intermediate position.

MATERIAL LIST			
No.	PART	MATERIAL	SPECIFICATION
1	Body	Cast Bronze	ASTM B584, C84400
2	Tail Piece	Cast Bronze	ASTM B584, C84400
3	Disc	Buna (B)/TFE (T)	
4	Disc Holder	Cast Bronze	ASTM B584, C85700
5	Spring	Bronze	ASTM B103, C52100

DIMENSIONS - INCHES/MILLIMETERS					
Units	Size	A	B	Weight	C <sub>v</sub>
Inches mm	3/8	1.22 31	1.97 50	0.35	2.5
Inches mm	1/2	1.22 31	2.09 53.2	0.44	4.1
Inches mm	3/4	1.50 38	2.31 59	0.57	7.6
Inches mm	1	1.91 48	2.66 68	0.89	13.0
Inches mm	1 1/4	2.16 55	3.09 79	1.28	23.0
Inches mm	1 1/2	2.59 66	3.31 84	1.72	31.0
Inches mm	2	3.13 51	3.78 96	2.58	54.0

† Non-Shock

**INNOVATION** IN EVERY VALVE

The information presented on this sheet is correct at the time of publication. Milwaukee Valve reserves the right to change design, and/or material specifications without notice. For the Installation, Operation and Maintenance Manual (IOM) see the Technical/Service Information section on our website. For the most current information access [www.milwaukeevalve.com](http://www.milwaukeevalve.com)

**MILWAUKEE VALVE**