

4

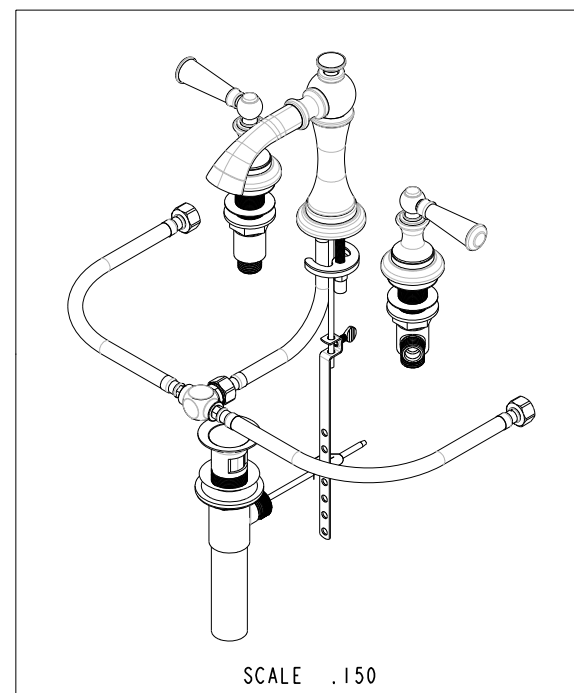
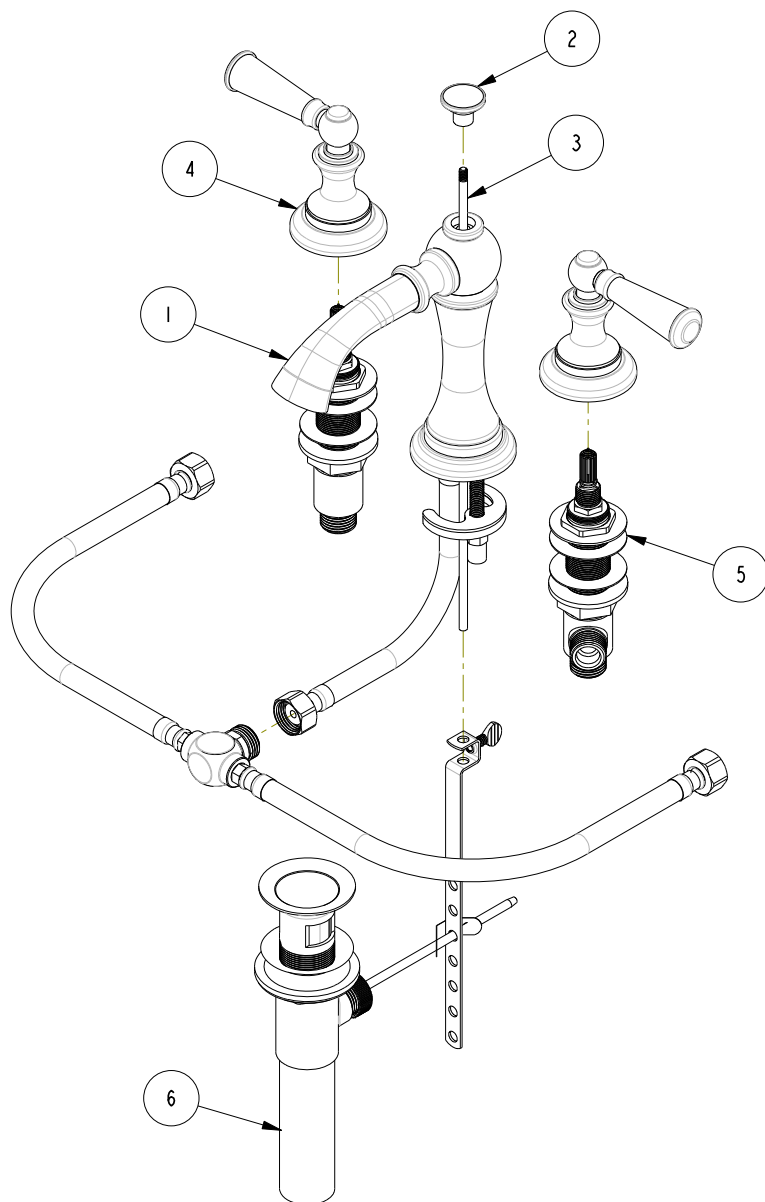
3

2

1

## BILL OF MATERIAL (CURRENT LEVEL)

ITEM	PT/ASSY	DESCRIPTION	TYPE	QTY.
1	2-769	SPOUT ASSEMBLY, WIDE SPREAD	ASSEMBLY	1
2	11583	POP-UP KNOB	PART	1
3	2-657	POP-UP ROD AND O-RING ASM	ASSEMBLY	1
4	3-379	LEVER HANDLE ASSEMBLY	ASSEMBLY	2
5	1-525	W/S VALVE INSTALLATION	ASSEMBLY	1
6	325	POP UP ASSEMBLY	ASSEMBLY	1



SCALE .150

COPYRIGHT 2005 BRASSTECH, INC. THESE DRAWINGS AND THE DESIGNS DEPICTED HEREIN ARE THE PROPRIETARY PROPERTY OF BRASSTECH. ANY USE OR REPRODUCTION IS SUBJECT TO THE EXPRESS APPROVAL OF BRASSTECH. UNAUTHORIZED USE IS STRICTLY PROHIBITED. ALL RIGHTS RESERVED.

**BRASSTECH**  
INCORPORATED

2001 E. CARNEGIE AVE.  
SANTA ANA, CA 92705  
(949) 417-5207

W/S LAVATORY FAUCET

ASSY. NO. 2450

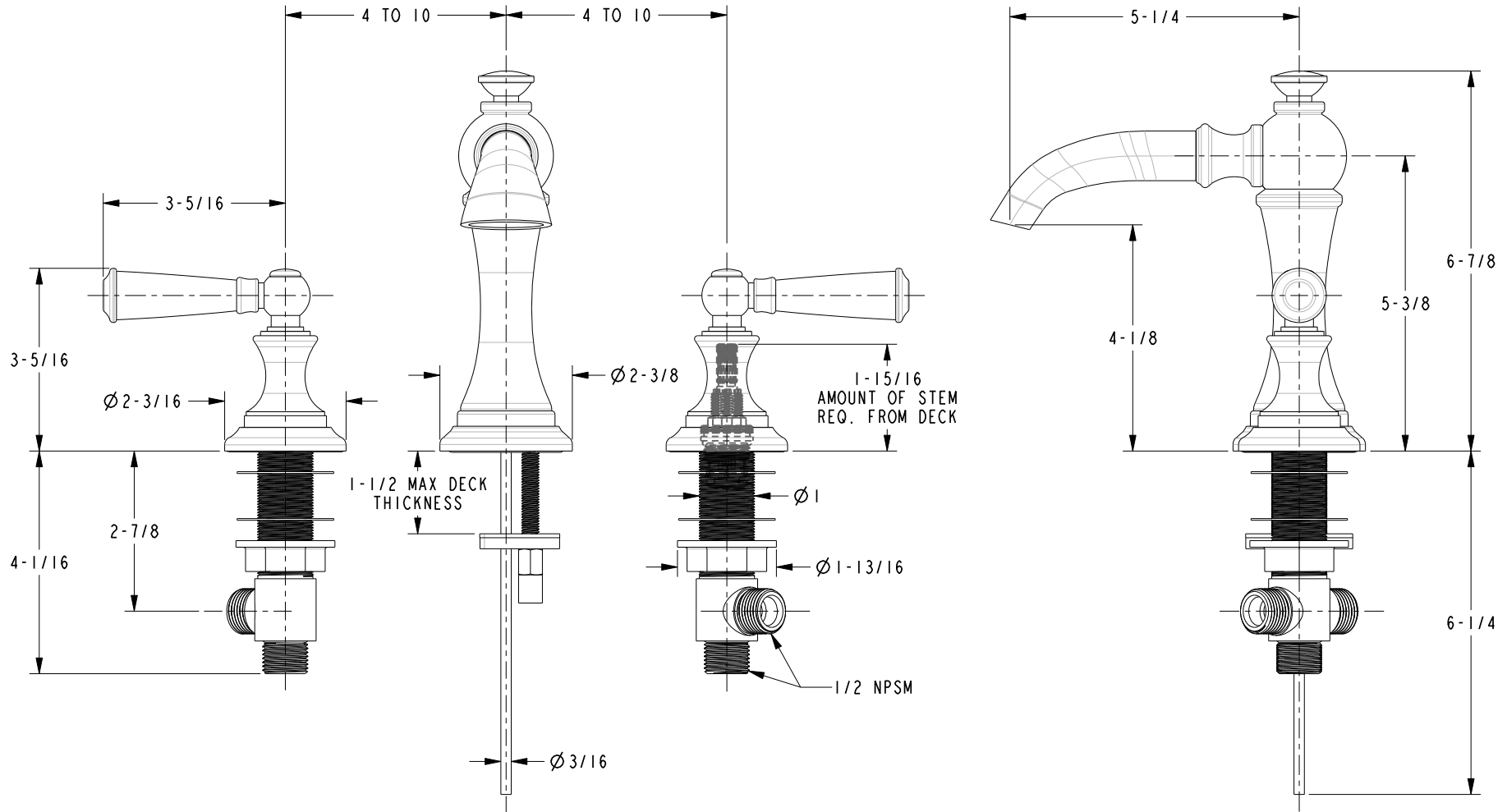
SCALE .230

REF. -

SHEET 1 OF 2

C	EN-2120	04/05/12
B	EN-1844	09/01/11
A	EN-1616	09/13/10
-	EN-1266	05/05/10
REV	REV DESC	DATE

# SPECIFICATION DWG



DIMENSIONS ARE IN INCHES AND AN APPROXIMATION OF A TYPICAL INSTALLATION

COPYRIGHT 2005 BRASSTECH, INC. THESE DRAWINGS AND THE DESIGNS DEPICTED HEREIN ARE THE PROPRIETARY PROPERTY OF BRASSTECH. ANY USE OR REPRODUCTION IS SUBJECT TO THE EXPRESS APPROVAL OF BRASSTECH. UNAUTHORIZED USE IS STRICTLY PROHIBITED. ALL RIGHTS RESERVED.

<b>BRASSTECH</b>		2001 CARNEGIE AVE. SANTA ANA, CA 92705 (949) 417-5207	
DWG NO.	2450	REV C	
SCALE	.350	REF.	SHEET 2 OF 2