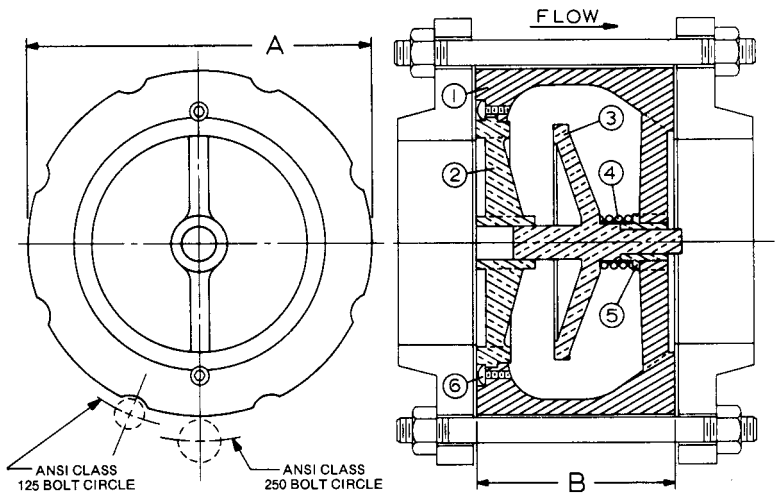


1400* 2"-10"

Iron Silent Check Valve
125 Class • Wafer Style
Stainless Steel Trim
Conforms to: MSS SP-125



Note 1: The wetted surface of this product contacted by consumable water contains less than one quarter of one percent (.25%) of lead by weight.

Note 2: Valve is designed for liquid service only. Install 5 to 10 pipe diameters downstream from pump discharge or elbows to avoid flow turbulence. Valve is designed to be mated to standard steel flanges.

MATERIAL LIST		
No.	PART	MATERIAL
1	Body	Cast Iron
2	Seat	St. Steel
3	Disc	St. Steel
4	Spring	St. Steel
5	Bushing	St. Steel
6	Screw	St. Steel

DIMENSIONS - INCHES/MILLIMETERS				
Units	Size	A	B	C _v
Inches mm	2	4.25 108	2.63 67	66
Inches mm	2 1/2	5.00 127	2.88 73	88
Inches mm	3	5.75 146	3.13 79	130
Inches mm	4	7.00 178	4.00 102	228
Inches mm	5	8.38 213	4.75 121	350
Inches mm	6	9.75 248	5.50 140	520
Inches mm	8	13.38 340	6.50 165	900
Inches mm	10	16.00 406	8.25 210	1450

Sizes 2" thru 6" are combination ANSI Class125 and 250. 8" and 10" sizes are ANSI Class 125.



The information presented on this sheet is correct at the time of publication. Milwaukee Valve reserves the right to change design, and/or material specifications without notice. For the Installation, Operation and Maintenance Manual (IOM) see the Technical/Service Information section on our website. For the most current information access www.milwaukeevalve.com

