

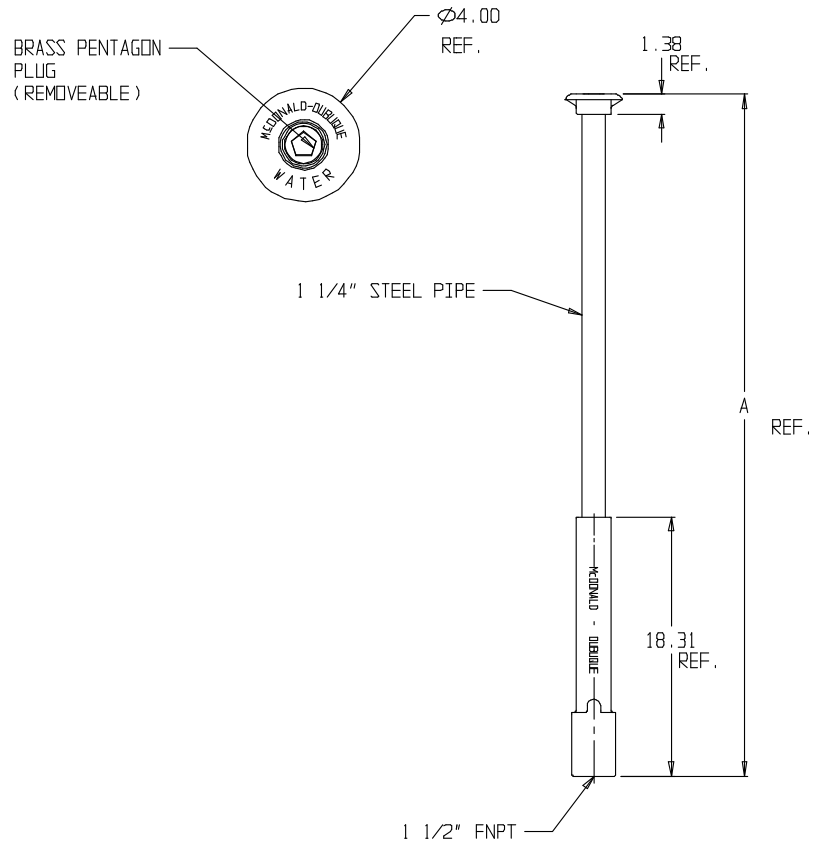
# SUBMITTAL DATA SHEET

## Curb Boxes – 5614

Minneapolis Pattern



MODEL NO.	SIZE	A-RANGE
5614	2 1/2	1 1/2' TO 2 1/2'
5614	3	2' TO 3'
5614	3 1/2	2 1/2' TO 3 1/2'
5614	4	3' TO 4'
5614	4 1/2	3 1/2' TO 4 1/2'
5614	5	4' TO 5'
5614	5 1/2	4 1/2' TO 5 1/2'
5614	6	5' TO 6'
5614	6 1/2	5 1/2' TO 6 1/2'
5614	7	6' TO 7'
5614	7 1/2	6 1/2' TO 7 1/2'
5614	8	7' TO 8'
5614	8 1/2	7 1/2' TO 8 1/2'
5614	9	8' TO 9'
5614	9 1/2	8 1/2' TO 9 1/2'
5614	10	9' TO 10'



### SUBMITTAL INFORMATION

- Brass components conform to ASTM B62 and ASTM B584, UNS C83600 -85-5-5-5 (latest revision) or ASTM B584, UNS C84400 -81-3-7-9 (latest revision)
- Lid and Base made of Cast Iron per ASTM A48, Class 25
- Upper Section made of steel pipe
- Coated with black dip



**A.Y. McDonald Mfg. Co.**  
P.O. Box 508  
Dubuque, IA 52004-508

**Toll Free:** 1-800-292-2737  
**Fax:** 1-800-832-9296  
**Hours:** 7:00 a.m. – 5:00 p.m., CST

sales@aymcdonald.com  
[www.aymcdonald.com](http://www.aymcdonald.com)

A.Y. McDonald considers the information on this assembly drawing correct when published. Item and option availability, including specifications, are subject to change without notice.

**Submitted by:**

09-14