

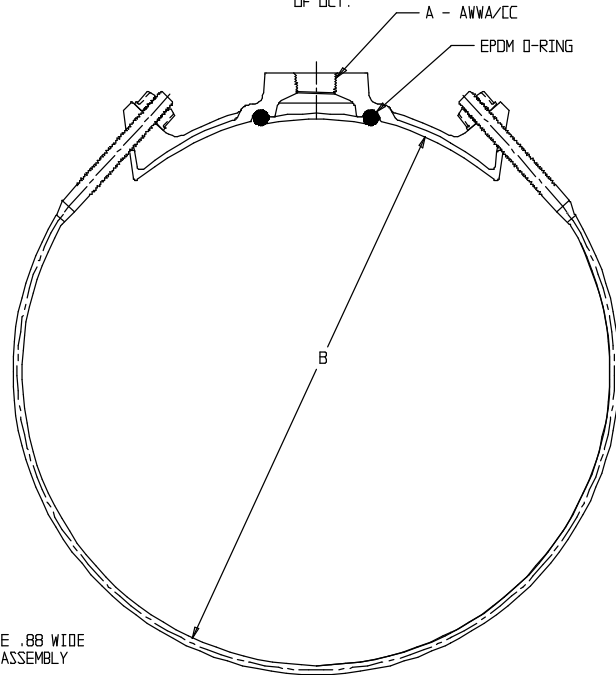
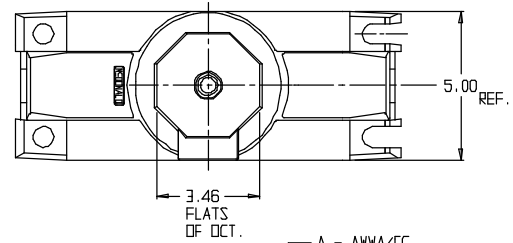
# SUBMITTAL DATA SHEET

## Silicon Bronze Strap Saddle – 3825B

Ductile Iron/Cement-Asbestos/Cast Iron x AWWA/CC



MODEL	SIZE	A	B
3825B	14 X 3/4	3/4	16.30-17.25
3825B	14 X 1	1	16.30-17.25
3825B	14 X 1 1/2	1 1/2	16.30-17.25
3825B	14 X 2	2	16.30-17.25
3825B	16 X 3/4	3/4	18.50-19.25
3825B	16 X 1	1	18.50-19.25
3825B	16 X 1 1/2	1 1/2	18.50-19.25
3825B	16 X 2	2	18.50-19.25
3825B	20 X 3/4	3/4	22.50-23.50
3825B	20 X 1	1	22.50-23.50
3825B	20 X 1 1/2	1 1/2	22.50-23.50
3825B	20 X 2	2	22.50-23.50
3825B	24 X 3/4	3/4	25.60-26.50
3825B	24 X 1	1	25.60-26.50
3825B	24 X 1 1/2	1 1/2	25.60-26.50
3825B	24 X 2	2	25.60-26.50



ALL STRAPS ARE .88 WIDE  
2 STRAPS PER ASSEMBLY

### SUBMITTAL INFORMATION

- Manufactured in compliance with ANSI/AWWA C800 (latest revision)
- Brass components conform to ASTM B62 and ASTM B584, UNS C83600 -85-5-5-5 (latest revision)
- Certified to NSF/ANSI 61
- Silicon Bronze strap(s) and cast brass nuts with enlarged washer bearing surface
- EPDM o-ring
- Pipe and tap size, and thread type identified on saddle
- Outlet boss with large wrench flats



**A.Y. McDonald Mfg. CO.**  
P.O. Box 508  
Dubuque, IA 52004-508

**Toll Free: 1-800-292-2737**

**Fax: 1-800-832-9296**

**Hours: 7:00 a.m. – 5:00 p.m., CST**

[sales@aymcdonald.com](mailto:sales@aymcdonald.com)

[www.aymcdonald.com](http://www.aymcdonald.com)

A.Y. McDonald considers the information on this assembly drawing correct when published. Item and option availability, including specifications, are subject to change without notice.

**Submitted by:**

09-14