

K	<div style="display: flex; justify-content: space-between; align-items: center;"> <div style="text-align: left;"> <p>JAY R. SMITH MFG. CO.® <small>MEMBER OF MORRIS GROUP INTERNATIONAL POST OFFICE BOX 3237 MONTGOMERY, ALABAMA 36109-0237 (USA) TEL: 334-277-8520 FAX: 334-272-7396 www.jrsmith.com</small></p> </div> <div style="text-align: center;"> <p>MEMBER OF:</p> </div> <div style="text-align: center;"> <p>MEMBER OF:</p> </div> </div>				LOCATION						
	<h2 style="margin: 0;">TERRAZZO FLOOR CLEANOUTS</h2> <h3 style="margin: 0;">WITH "TWIS-TO-FLOOR®" ADJUSTABLE TOPS</h3>										
DRAWING NUMBER S4211	SIZE A	SCALE: NONE	DATE: 2-16-70	APPROVED BY: JM	CHECKED BY: BH	DRAWN BY: RK	DIMENSIONS ARE SUBJECT TO MANUFACTURERS TOLERANCE AND CHANGE WITHOUT NOTICE		WE CAN ASSUME NO RESPONSIBILITY FOR USE OF SUPERSEDED OR VOID DATA		
<h3 style="margin: 0;">SQUARE NICKEL BRONZE TOP WITH TERRAZZO RECESS</h3> <p style="margin: 0;">FUNCTION: For use in floors and areas which are covered with a floor covering such as asphalt or vinyl tile, linoleum, etc., bearing foot and medium load wheeled traffic. The square top is particularly adaptable to the straight line patterns of tile designs. Allows for easy floor level adjustment.</p>											
<p style="text-align: center;">TWIS-TO-FLOOR® ADJUSTMENT</p> <p style="text-align: center;">SPEEDI-SET OUTLET ▲</p> <p style="text-align: center;">"A" (Pipe Size) = 02(50), 03(75) or 04(100)</p>											
<div style="display: flex; justify-content: space-between;"> <div style="width: 45%;"> <p><input type="checkbox"/> Fig. 4211L.....Gasket Seal - ABS Plug</p> <p><input type="checkbox"/> Fig. 4212L.....Gasket Seal - Bronze Plug</p> <p><input type="checkbox"/> Fig. 4213L.....Taper Thread - Bronze Plug</p> <p><input type="checkbox"/> Fig. 4214L.....Taper Thread - ABS Plug</p> </div> <div style="width: 50%;"> <p>((Twis-to-Floor® design shown with gasketed plug.)</p> <p>NOTE: Dimensions shown in parentheses are in millimeters.</p> </div> </div>											
<div style="display: flex; justify-content: space-between;"> <div style="width: 30%;"> <p>REGULARLY FURNISHED:</p> <p>Duco Cast Iron Cleanout with Square Adjustable Secured Nickel Bronze Top with 1/2"(13) Terrazzo Recess. Closure Plug Type as Indicated By Figure Number Selected.</p> </div> <div style="width: 35%;"> <p>VARIATIONS:</p> <p><input type="checkbox"/> Flashing Flange -F</p> <p><input type="checkbox"/> Flange with Flashing Clamp -F-C</p> <p><input type="checkbox"/> Vandal Proof Top -U</p> <p>▲ Available in Extra Heavy, Service Weight or NO-HUB.</p> </div> <div style="width: 30%;"> <p>OPTIONAL MATERIALS:</p> <p><input type="checkbox"/> Galvanized Cast Iron -G</p> <p><input type="checkbox"/> Polished Bronze Top -PB</p> </div> </div>											
FIGURE NUMBER	K J H	07/29/02 04/12/01 10/17/00	Corrected Clamp & Flange view Added dimension and note New design	JJ JJ JJ	CL CL BS	WEIGHT POUNDS	VOLUME CUBIC FEET	FIGURE NUMBER			
REV.	DATE	DESCRIPTION	BY	CKD. BY	4211 SERIES						



WARNING: Cancer and Reproductive Harm - www.P65Warnings.ca.gov



JAY R. SMITH MFG. CO.
 MEMBER OF MORRIS GROUP INTERNATIONAL
 POST OFFICE BOX 3237
 MONTGOMERY, ALABAMA 36109-0237 (USA)
 TEL: 334-277-8520 FAX: 334-272-7396 www.jrsmith.com

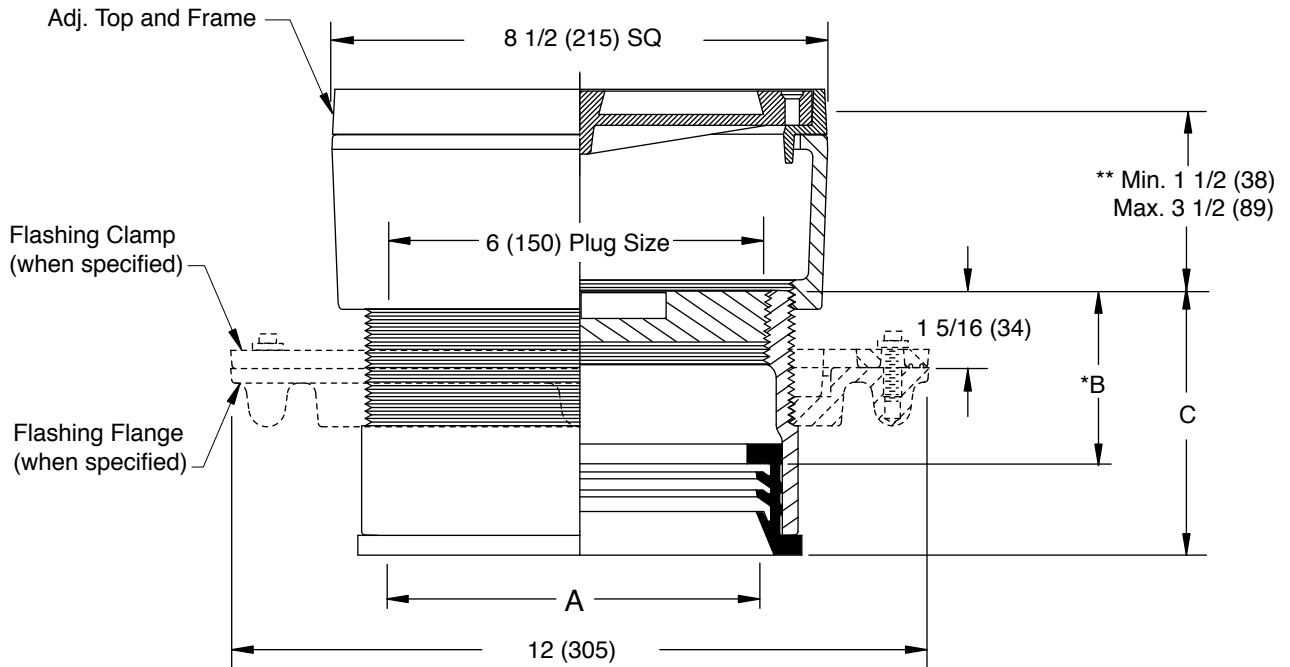


LOCATION

TERRAZZO FLOOR CLEANOUTS WITH "TWIS-TO-FLOOR®" ADJUSTABLE TOPS

SQUARE NICKEL BRONZE TOP WITH TERRAZZO RECESS

FUNCTION: Used in terrazzo and similar poured floors bearing foot and medium load wheeled traffic. The recess is filled with the floor material, presenting an unobtrusive appearance. Lock-in design firmly holds floor material in recess.



SPEEDI-SET OUTLET ▲

"A" (Pipe Size) = 06(150) & 08(200)

A SIZE	B	C
06(150)	*3(76)	4 9/16(117)
08(200)	*3 1/4(83)	4 13/16(121)

▲ Available in "L" Service Weight, "LXH" Extra Heavy or "LPVC" PVC or ABS. "LPVC" applicable to 06(150) Pipe Size only.

* This Dimension to Internal Stop of Speedi-Set Gasket.

** When Flange-F is specified Min. 1 1/2 (38) becomes 2 (51)

"TWIS-TO-FLOOR®" ADJUSTMENT

SPEEDI-SET OUTLET ▲

☐ Fig. 4213L.....Taper Thread - Bronze Plug

REGULARLY FURNISHED:

Duco Cast Iron Cleanout with Taper Thread Bronze Plug and Square Adjustable Secured Nickel Bronze Top with 1/2 (13) Terrazzo Recess.

VARIATIONS:

- ☐ Flashing Flange -F
- ☐ Flange with Flashing Clamp -F-C
- ☐ Vandal Proof Top -U

OPTIONAL MATERIALS:

- ☐ Galvanized Cast Iron -G
- ☐ Polished Bronze Top -PB

NOTE: Dimensions shown in parentheses are in millimeters.

DRAWING NUMBER
S4211BS

SIZE
A

SCALE:
NONE

DATE:
5-5-06

APPROVED BY:
CEL

CHECKED BY:
CL

DRAWN BY:
RN

FIGURE
NUMBER
4213

REV.	DATE	DESCRIPTION	BY	CKD. BY

WEIGHT POUNDS	VOLUME CUBIC FEET

FIGURE NUMBER 4213



WARNING: Cancer and Reproductive Harm - www.P65Warnings.ca.gov