

Part No: 3906-030PTC

**Fabricated CPVC Schedule 80 P-Trap
DWV**

Desc: 3 CPVC P-TRAP SOC SCH80

MSRP: 348.81

Part Code: 099

Weight(lbs): 5.115

Weight(kg): 2.32

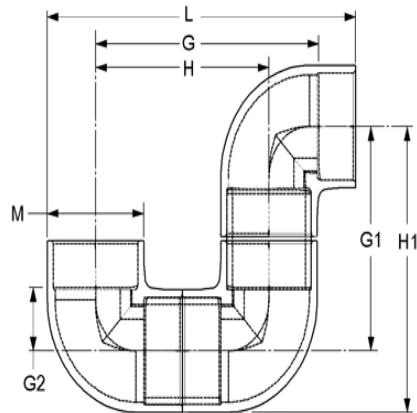
Weight(gm): 2320

Size: 3

Color: GRAY

Material: CPVC

Connection Socket X Socket



G = 8-1/4

G1 = 6-1/8

G2 = 1-1/16

H = 6-3/8

H1 = 10-1/4

L = 12-3/16

M = 4-3/16

Fabricated Dimension References:

G = (LAYING LENGTH) intersection of center lines to bottom of socket/thread; 90° elbows, tees, crosses; $\pm 1/4$ & larger $\pm 1/2$ inch.

H = Intersection of center lines to face of fitting; 90° elbows, tees, crosses; $\pm 1/4$ inch.; wyes $\pm 1/2$ inch; 14" & larger inch.

J = Intersection of center lines to bottom of socket/thread; 45° elbows; $\pm 1/4$ inch; 14" & larger $\pm 1/2$ inch.

L = Overall length of fittings; $\pm 1/2$ inch; wyes ± 1 inch; 14" & larger ± 1 inch.

M = Outside diameter of socket/thread hub; $\pm 1/4$ inch.

N = Socket bottom to socket bottom; couplings; $\pm 1/2$ inch.

W = Height of cap; $\pm 1/4$ inch.

Typical Fabricated Dimension References

