

WRS SERIES - 1/6 HP, 1/3 HP, 4/10 HP DRAINOSAUR® & DRAINOSAUR JR.®

APPLICATIONS

Impractical drainage areas, under sinks, laundry trays

FEATURES

BASIN FEATURES

- 3.5 and 5 gallon size options
- Polypropylene, lightweight, corrosion-resistant
- Designed with O-rings for watertight seal
- Cover includes removable filter for easy cleaning
- Cover includes 2" FNPT discharge (outlet), 2" FNPT vent, 1-1/2" FNPT inlet, and 2" MNPT to 1-1/2" FNPT reducer bushing
- IAPMO listed
- Pre-assembled, ready to install

PUMP FEATURES

- 1/6, 1/3, and 4/10 hp options
- Multiple switch options
- cCSAus listed (pump only)



SERIES SPECIFICATIONS

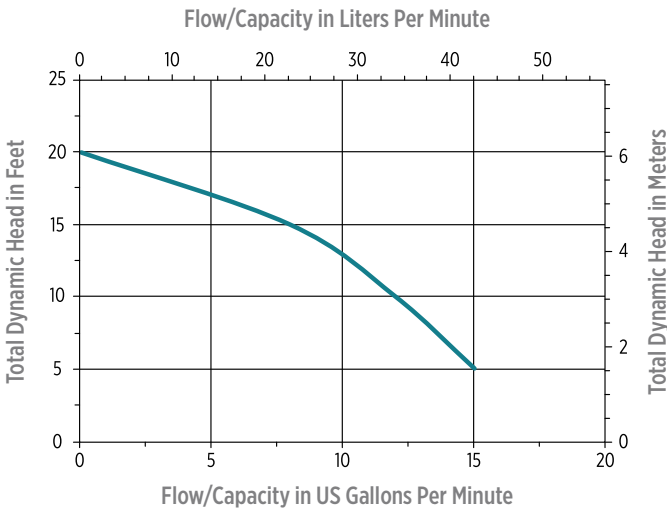
HP	Volts	Hz	Amps	Watts	Gallons per minute (Liters per Minute) @ Height				Shut-Off	PSI
					5'	10'	15'	20'		
1/6	115	60	5	380	15 (57)	12 (45)	8 (30)	–	21' (6.4 m)	9.1
1/3	115	60	9	720	46 (174)	29 (110)	13 (49)	–	18' (5.49 m)	7.8
4/10	115	60	7.5	800	70 (265)	65 (246)	55 (208)	50 (189)	40' (12.19 m)	17.3

Item No.	Model	HP	Volts	Tank Size	Switch Type / Operation	On Level	Off Level	Cord	Weight lbs (Kg)	Pump Item No.	Pump Model No.
505055	WRS-5	1/6	115	5 Gallon	Piggyback Diaphragm	6" - 9" (15.2 cm - 23 cm)	1" - 4" (2.5 cm - 10 cm)	10' (3m)	19 (8.62 Kg)	505300	5-ASP
506065	WRSC-6	1/3	115	3.5 Gallon	Integral Diaphragm	4" - 7" (10.2 cm - 17.8 cm)	1" - 3" (2.5 cm - 7.6 cm)	10' (3m)	24 (10.89 Kg)	506160	6-CIA-ML
506055	WRS-6	1/3	115	5 Gallon	Integral Diaphragm	7" - 10" (17.8 cm - 25.4 cm)	1" - 4" (2.5 cm - 10.2 cm)	10' (3m)	26 (11.79 Kg)	506158	6-CIA
509268	WRS-9	4/10	115	5 Gallon	Piggyback Vertical Mechanical	7" - 10" (17.8 cm - 25.4 cm)	2" - 5" (5 cm - 12.7 cm)	10' (3m)	35 (15.88 Kg)	509806	9EC-CIM

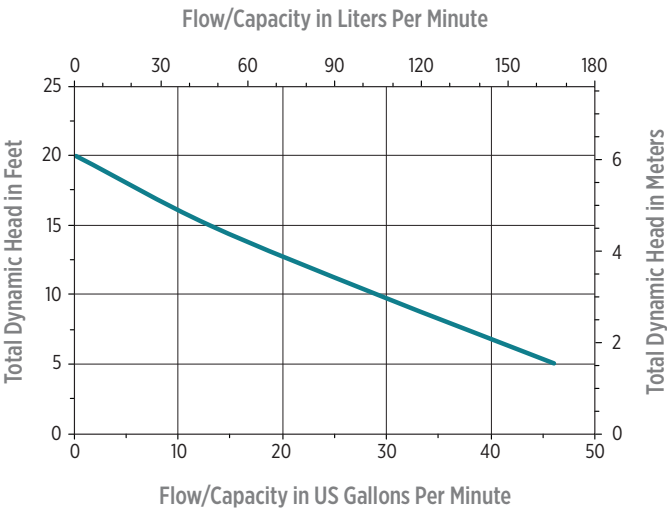
WRS SERIES - 1/6 HP, 1/3 HP, 4/10 HP

PERFORMANCE DATA

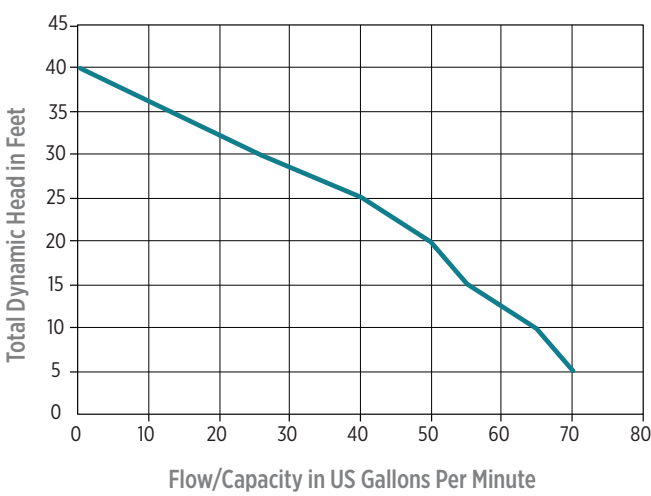
WRS-5



WRS-6 & WRSC-6

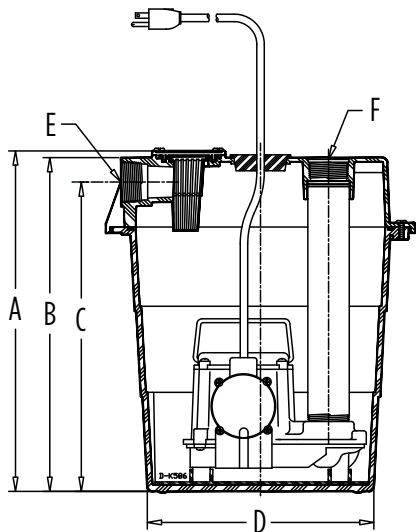


WRS-9

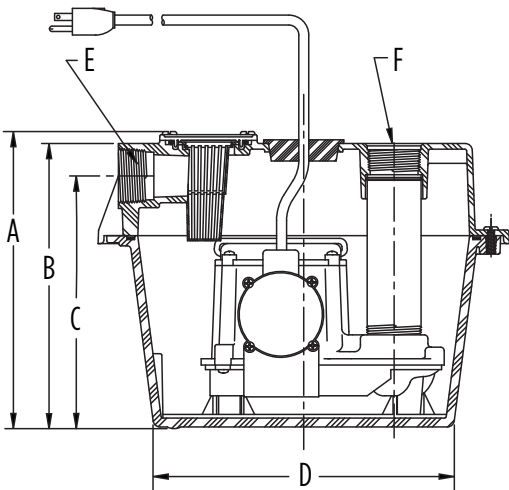


WRS SERIES - 1/6 HP, 1/3 HP, 4/10 HP

ENGINEERING DATA



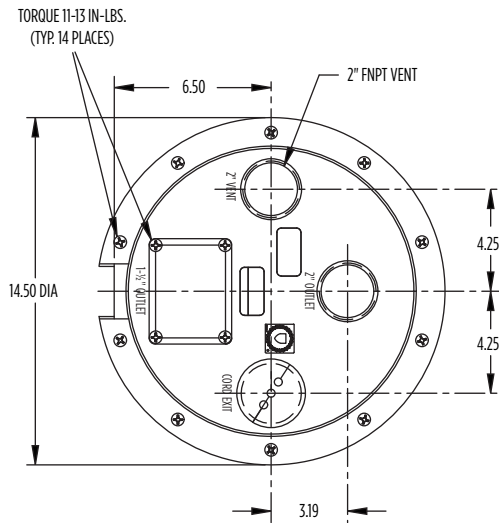
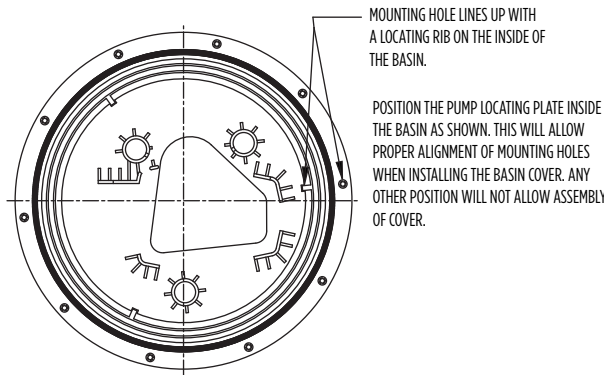
WRS



WRSC

Model	A	B	C	D	E	F
WRS-5	16.17" (41.07 cm)	15.68" (39.83 cm)	14.75" (37.47 cm)	10.63" (27 cm)	1-1/2" ( FNPT 3.81 cm)	2" ( FNPT 5.08 cm)
WRS-6	16.17" (41.07 cm)	15.68" (39.83 cm)	14.75" (37.47 cm)	10.63" (27 cm)	1-1/2" ( FNPT 3.81 cm)	2" ( FNPT 5.08 cm)
WRS-9	16.17" (41.07 cm)	15.68" (39.83 cm)	14.75" (37.47 cm)	10.63" (27 cm)	1-1/2" ( FNPT 3.81 cm)	2" ( FNPT 5.08 cm)
WRSC-6	10.55" (26.8 cm)	10.06" (25.55 cm)	8.9" (22.61 cm)	10.63" (27 cm)	1-1/2" ( FNPT 3.81 cm)	2" ( FNPT 5.08 cm)

PLATE ALIGNMENT DIAGRAM



# WRS SERIES - 1/6 HP, 1/3 HP, 4/10 HP

## TYPICAL INSTALLATION

