

\$704
Off

P265-1 BUNDLE

BUNDLE PACKAGE

SFB 120-1 Condensing Boiler x 1
40 Gallon Indirect x 1
EZ PIPE Manifold x 1

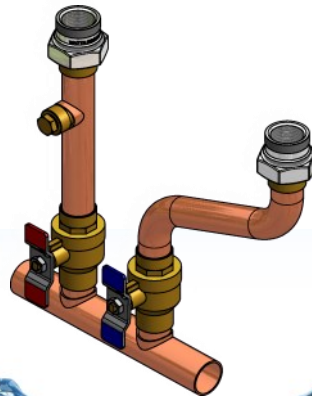
List Price \$5512.00



 **INTERSTOR**

40 Gallon Indirect

Part# 034-008



 **SFB 120-1**

13,600 to 120,000 BTU/HR

Condensing Boiler

Part# 012-005

 **EZ PIPE**

Manifold

Part# 251-063B

CUTTING EDGE HEATING
AND HOT WATER

IBC

SFB 120-1 13,600 to 120,000 BTU/HR Condensing Boiler

| SPECIFICATIONS | SFB 120-1 |
|--|------------|
| CSA Input (Natural Gas or Propane *) – MBH | 13.6 - 120 |
| CSA Input (Natural Gas or Propane *) – KW | 4 – 35.2 |
| CSA Output – MBH | 13 – 118 |
| CSA Output - KW | 3.8 – 31.7 |
| A.F.U.E | 95% |
| Min gas pressure (Nat. Gas or Propane) – inch w.c. | 4 |
| Max gas pressure (Nat. Gas or Propane) – inch w.c. | 14 |
| Power (120Vac/60Hz) - Watts @ full fire with internal pump | 126 |
| Weight (empty) – lbs/Kg | 83 / 39 |
| Pressure vessel water content – USG/Liters | 0.5 / 1.9 |
| Max boiler flow rate - US GPM / LPM | 11 / 41.6 |
| Min boiler flow rate - US GPM / LPM | 2 / 7.6 |
| Max operating pressure – Space Heating Coil - psig | 43.5 |
| Approved installation altitude - ASL | 10,000 ft |
| Ambient temperature – Low (°F/°C) | 32/0 |
| Ambient temperature – High (°F/°C) | 122 / 50 |
| Max relative humidity (non-condensing) | 90% |
| Min water temperature - Space Heating (°F/°C) | 51 / 10 |
| Max water temperature – Space Heating (°F/°C) | 194 / 90 |
| Max equivalent vent length 2" (each side) | 65' |
| Max equivalent vent length 3" (each side) | 120' |

| EXHAUST PIPE SIZE | MAXIMUM EQUIVALENT LENGTH |
|----------------------------------|---------------------------|
| Sched.40; Rigid PPs | (each side) |
| 2" | 65' |
| 3" | 120' |
| 2"/3" 90° Long sweep vent elbow | Allow 5' equivalent feet |
| 2"/3" 90° Short sweep vent elbow | Allow 8' equivalent feet |
| 2"/3" 45° Vent elbow | Allow 3' equivalent feet |
| PPS | |
| PPs 87-90° Elbow | Allow 8' equivalent feet |
| Flexible PPs | |
| 3" Flexible | 35 Actual feet |

Maximum exhaust venting length

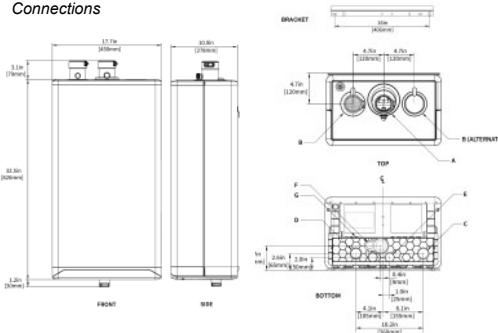
| SURFACE | DISTANCE FROM COMBUSTIBLE SURFACES | RECOMMENDED DISTANCE FOR INSTALLATION AND SERVICE |
|------------|------------------------------------|---|
| Front | 2" | 24" |
| Rear | 0" | 0" |
| Left side | 1.5" | 6" (labels may be difficult to read with reduced clearance) |
| Right side | 4" | 6" (labels may be difficult to read with reduced clearance) |
| Top | 2" | 24" |
| Bottom | 8" | 24" |

Clearance from boiler cabinet



| DESCRIPTION | SFB 120-1 |
|---------------------------------|-------------------|
| A Exhaust outlet | 2" Schedule 40 |
| B Combustion air | 2" Schedule 40 |
| C Heating water inlet (return) | 1" Male NPT |
| D Heating water outlet (supply) | 1" Male NPT |
| E Gas inlet | 3/4" Male NPT |
| F Condensate outlet | 3/4" Hose |
| D Knock-outs (3) | 7/16" Rubber Plug |

Connections



Propane Fuel Conversion kit included in the box

Boilers are shipped with 30 psi pressure relief valve



INTERSTOR

Indirect Fired Water Heater
40 US Gallon



Features:

- High performance domestic hot water.
- Constructed of 444 grade stainless steel, pickled & passivated for the highest possible resistance to corrosion.
- High capacity smooth wall stainless steel coil.
- Maintenance free design.
- Light weight for easy installation.
- 2" of polystyrene foam insulation for an extremely low standby heat loss.
- Removable inspection port for easy access to coil and tank.
- Standard Aquastat & 10KΩ temperature sensor.
- 10 year non prorated residential warranty with limited lifetime option.



Conforms to NSF / ANSI Std. 372



Conforms to the A.G.A. Requirement for Indirect Water Heaters for use with External Heat Source, No. 1-91.

| MAX. FIRST HOUR RATING US GAL/Hr @ | | CONTINUOUS RATING US GAL/HR@ | | BOILER OUTPUT REQUIRED BTU/HR | | BOILER WATER FLOW GPM | | PRESSURE DROP THROUGH COIL (FT. WATER) | |
|---|------|---------------------------------|--------------------|--------------------------------------|------------------------|--------------------------|----------------------|---|--|
| MODEL | | 135F | | 135F | | | | | |
| Based on 180°F boiler supply & 58°F entering cold water | | | | | | | | | |
| BTI 40 | 188 | 156 | 100,000 | 8 | 3 | | | | |
| TANK CAPACITY | | DIMENSIONS | | PIPING CONNECTIONS NPT | | RECIRCULATION | RELIEF VALVE | APPROX. | |
| MODEL | USG | HEIGHT INCHES | DIAMETER INCHES | DOMESTIC WATER IN / OUT INCHES | BOILER WATER IN/OUT | CONNECTION INCHES | CONNECTION INCHES | SHIPPING WEIGHT IBS | |
| BTI 40 | 39.9 | 47.0 | 21.4 | 3/4 | 1 | N/A | 3/4 | 66.2 | |