

Part No: S1580C10F

Valves

Swing & Spring Check

Desc: 1 PVC CL UTILITY SPRG CHECK VLV THD EPDM

MSRP: 44.25

Part Code: 026

Weight(lbs): 0.344

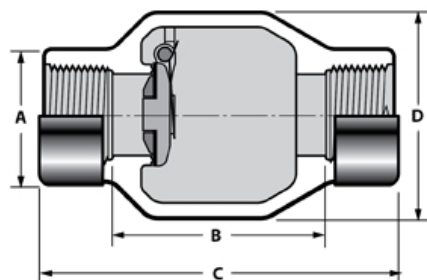
Weight(kg): 0.156

Weight(gm): 156

Size: 1"

Color: CLEAR

Material: PVC



Type Utility Spring Check
Connection Fipt
Body Color Clear
Pressure Rating 150 psi @ 73° F Full Flow (Open)
 75 psi Back Pressure (Closed)

A = 1-11/16

B = 2-15/16

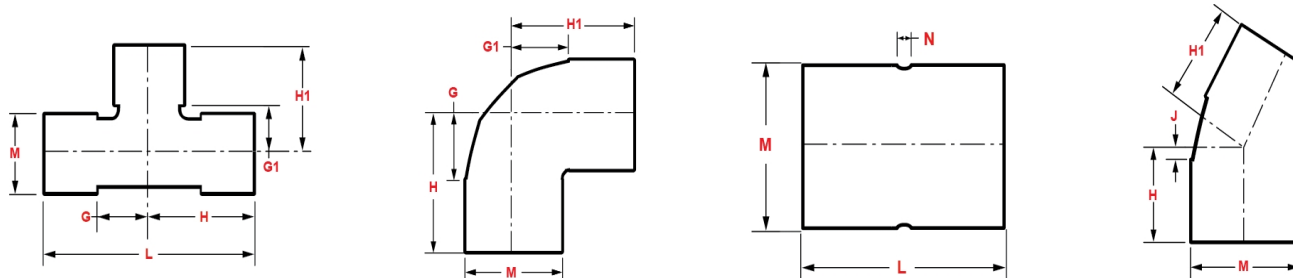
C = 4- 9/16

D = 2- 5/8

Fabricated Dimension References:

- G** = (LAYING LENGTH) intersection of center lines to bottom of socket/thread; 90° elbows, tees, crosses; $\pm 1/4$ & larger $\pm 1/2$ inch.
- H** = Intersection of center lines to face of fitting; 90° elbows, tees, crosses; $\pm 1/4$ inch.; wyes $\pm 1/2$ inch; 14" & larger inch.
- J** = Intersection of center lines to bottom of socket/thread; 45° elbows; $\pm 1/4$ inch; 14" & larger $\pm 1/2$ inch.
- L** = Overall length of fittings; $\pm 1/2$ inch; wyes ± 1 inch; 14" & larger ± 1 inch.
- M** = Outside diameter of socket/thread hub; $\pm 1/4$ inch.
- N** = Socket bottom to socket bottom; couplings; $\pm 1/2$ inch.
- W** = Height of cap; $\pm 1/4$ inch.

Typical Fabricated Dimension References



The information printed here is based on current information & product design at the time of publication and is subject to change without notification. Spears® ongoing commitment to product improvement may result in some variation. No representation, guarantees or warranties of any kind are as to its accuracy, suitability for particular application or results to be obtained therefrom. For verification of technical data or additional information, please contact Spears® Technical Service Department :: WEST COAST : (818) 364-1611 - EAST COAST : (717) 938-9006