

Features

- Rectangular basin.
- With overflow.
- No faucet holes; requires wall- or counter-mount faucet.
- 20-1/4" (508 mm) x 14" (355 mm) x 7-1/8" (181 mm)

Material

- Vitreous china.

Installation

- Drop-in.



ADA

Codes/Standards

ASME A112.19.2/CSA B45.1

ADA



ICC/ANSI A117.1

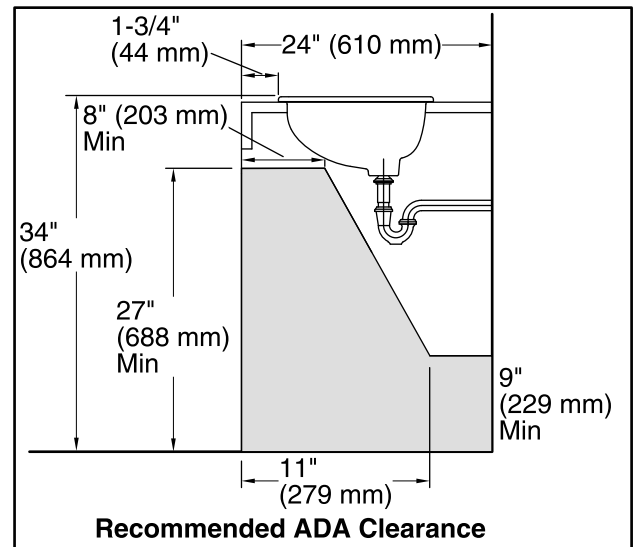
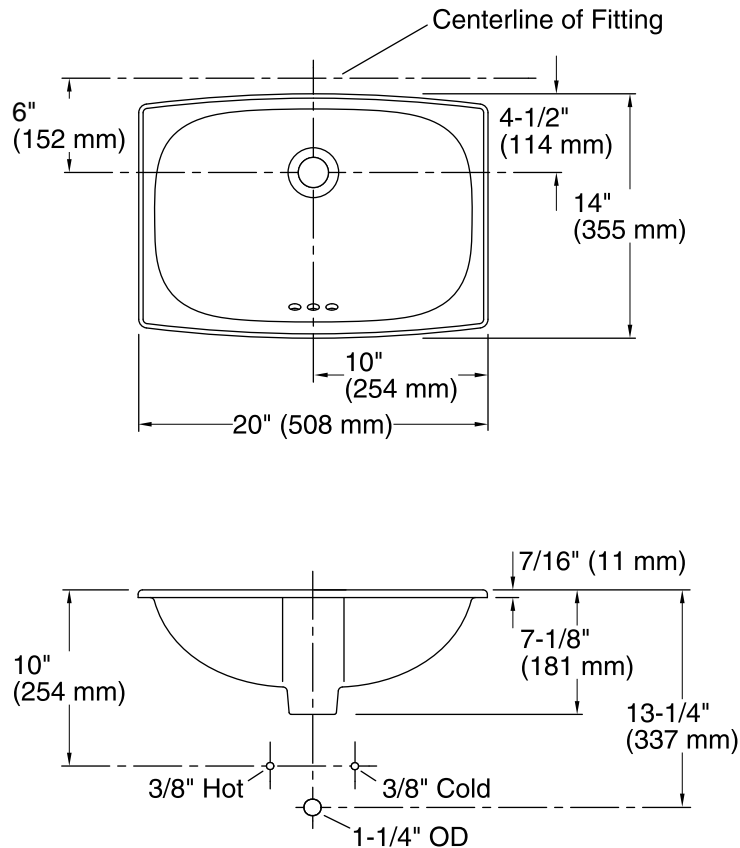
STERLING® Warranty - Toilets and Lavatories

See website for detailed warranty information.

Available Color/Finishes

Color tiles intended for reference only.

Color	Code	Description
	0	White
	96	KOHLER Biscuit



Notes

Install this product according to the installation instructions.

Measure your actual product for roughing-in details.

ADA compliant when installed to the specific requirements of these regulations.

Technical Information

All product dimensions are nominal.

Bowl configuration: Single

Installation: Drop-in

Bowl area (Only) Length: 18-3/16" (462 mm)
Width: 12-3/16" (310 mm)
Water depth: 5" (127 mm)

Drain hole: 1-11/16" (43 mm)

Template: 1084867-7, required, included