

SPECIFICATIONS

- Notes:
- 1. 4" FPT inlet/outlet with 4" plain end adapters, single inlet and triple outlet.
 - 2. Unit weight - w/ cast iron covers: 376 lbs. (For wet weight add 2,310 lbs.)
 - 3. Maximum operating temperature: 150° F continuous
 - 4. Capacities - Liquid: 277 gal.; Grease: 1,895 lbs. (260 gal.) @100GPM Grease: 1,196 lbs. (164 gal.) @200GPM Solids: 69 gal.
 - 5. This unit does not require flow control for 100 GPM applications. Built-in flow control is provided for 200 GPM applications. For series installations, only install flow control on the first unit in the series if necessary.
 - 6. For gravity drainage applications only.
 - 7. Do not use for pressure applications.
 - 8. Cover placement allows full access to tank for proper maintenance.
 - 9. Vent not required unless per local code.
 - 10. Engineered inlet and outlet diffusers with inspection ports are removable to inspect / clean piping.
 - 11. Integral air relief / Anti-siphon / Sampling access.
 - 12. Adjustable cover adapters provide up to 4" of additional height.
 - 13. Designed for below-grade, above-grade, indoor or outdoor installations.
 - 14. Safety Star®, access restrictor built into each cover adapter, prevents accidental entry to tanks (450 lb rating).

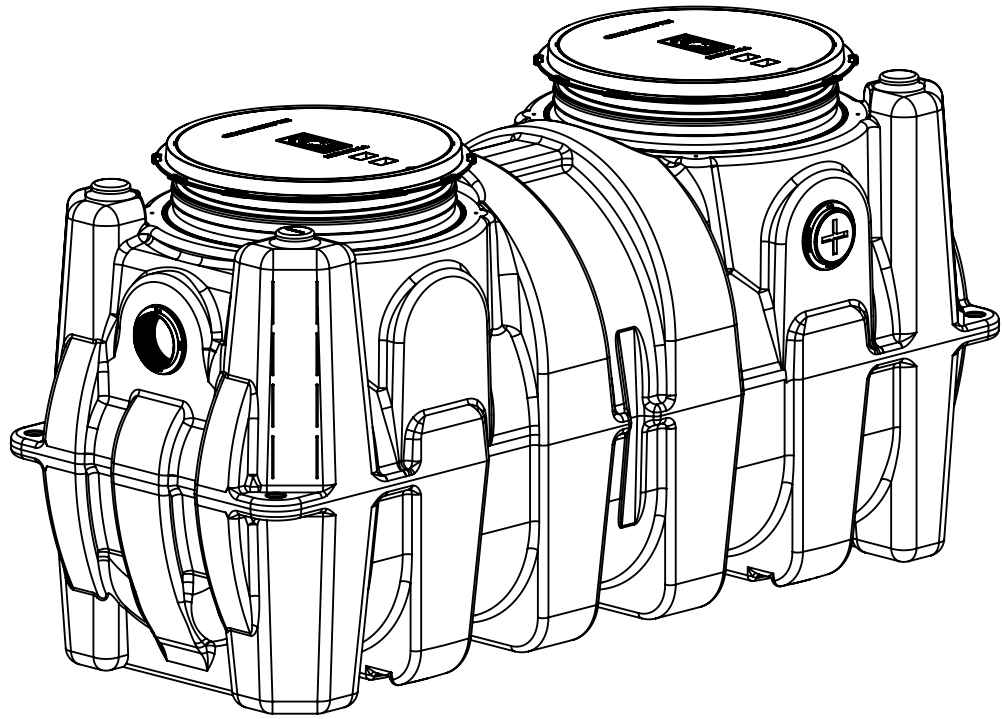
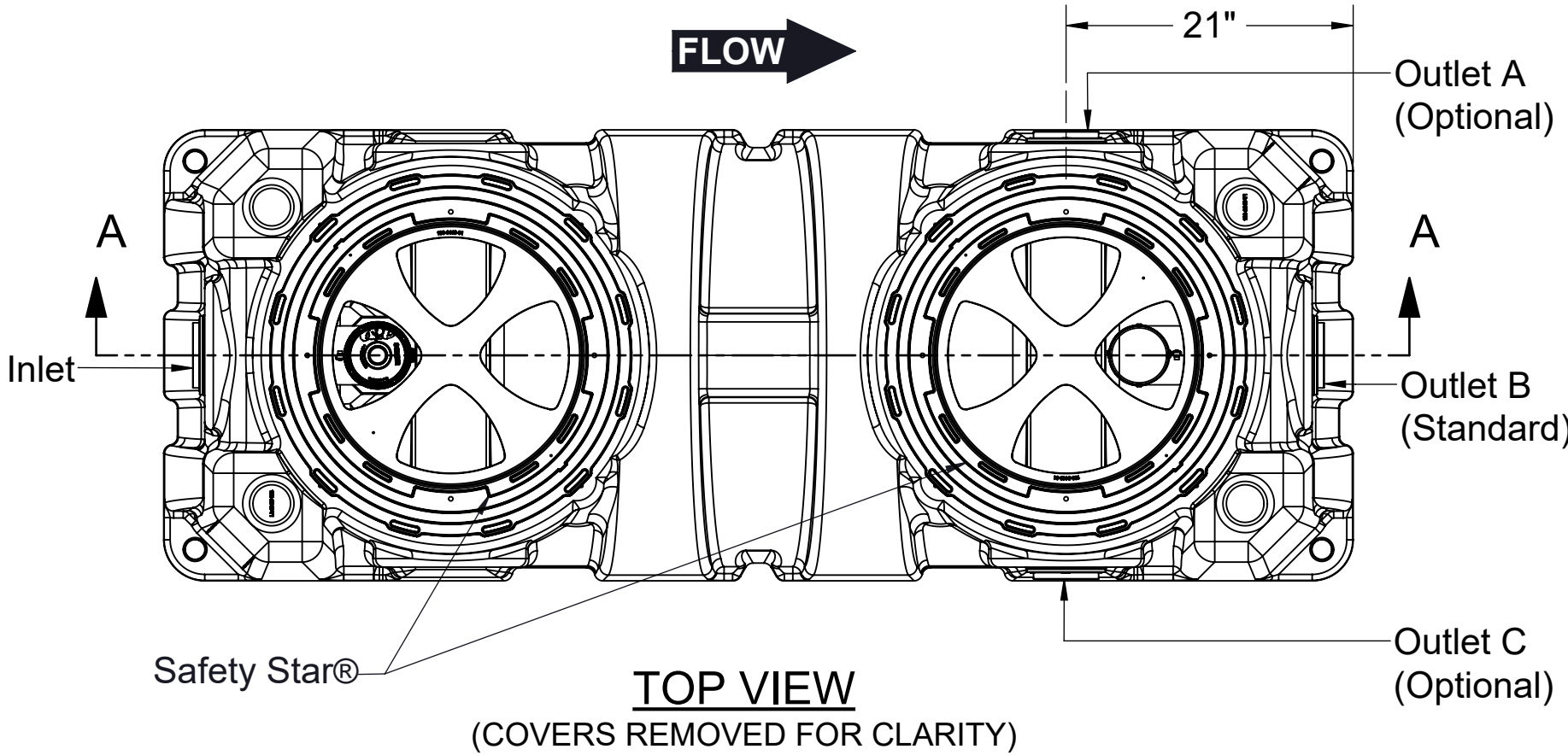
ENGINEER SPECIFICATION GUIDE

Schier Great Basin™ grease interceptor model # GB-250 shall be lifetime guaranteed and made in USA of seamless, rotationally-molded polyethylene with minimum 3/8" uniform wall thickness. Interceptor shall be furnished for above or below-grade installation with adjustable cover adapters, Safety Star® access restrictor built into each cover adapter, built-in flow control (for 200 GPM only) and three outlet options. Interceptor shall be certified to ASME A112.14.3 (Type D for 100 GPM, type C for 200 GPM) and CSA B481.1. Interceptor flow rate shall be 100 GPM or 200 GPM. Interceptor grease capacity shall be 1,895 lbs. @ 100 GPM or 1,196 lbs. @ 200 GPM. Cover shall provide water/gas-tight seal and have minimum 16,000 lbs. load capacity.

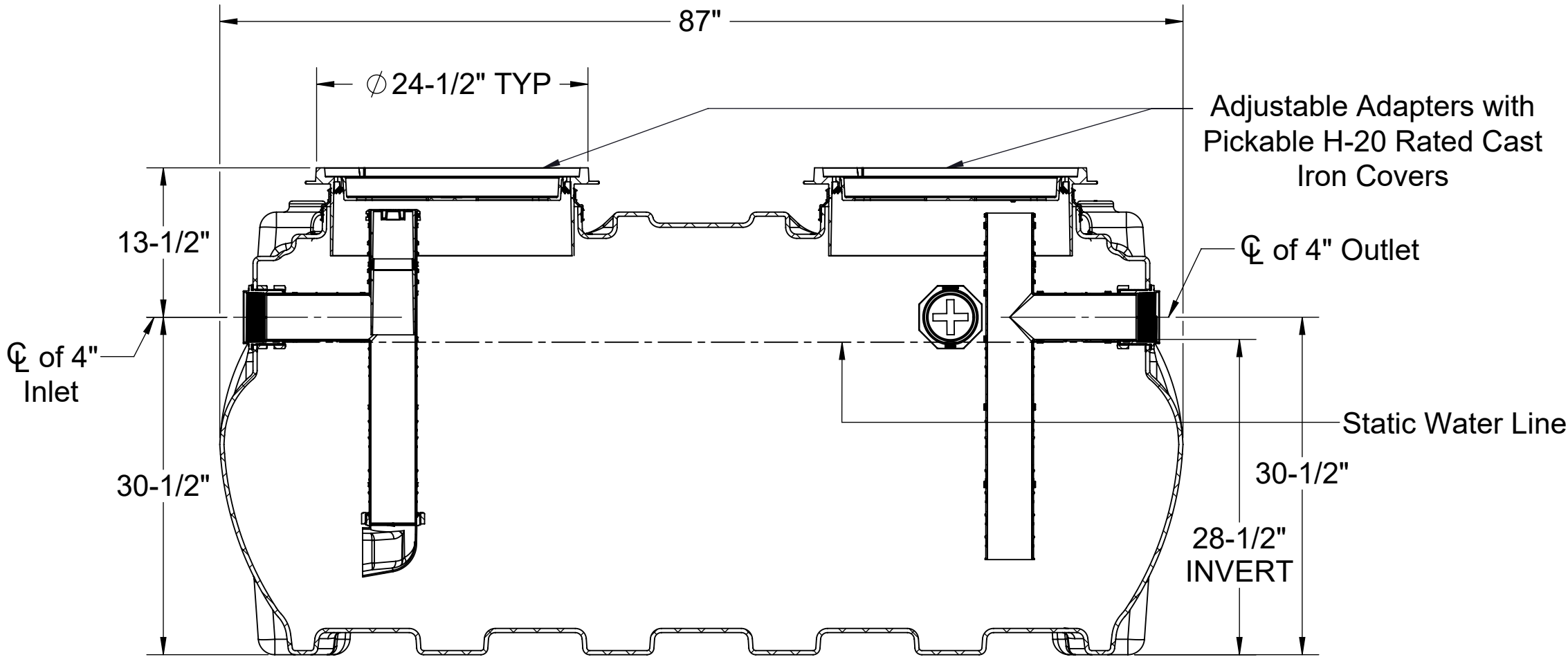
CERTIFIED PERFORMANCE

Great Basin™ hydromechanical grease interceptors are third party performance-tested and listed by IAPMO to ASME #A112.14.3 and CSA B481.1 grease interceptor standards and greatly exceed requirements for grease separation and storage. They are compliant to the Uniform Plumbing Code and the International Plumbing Code.

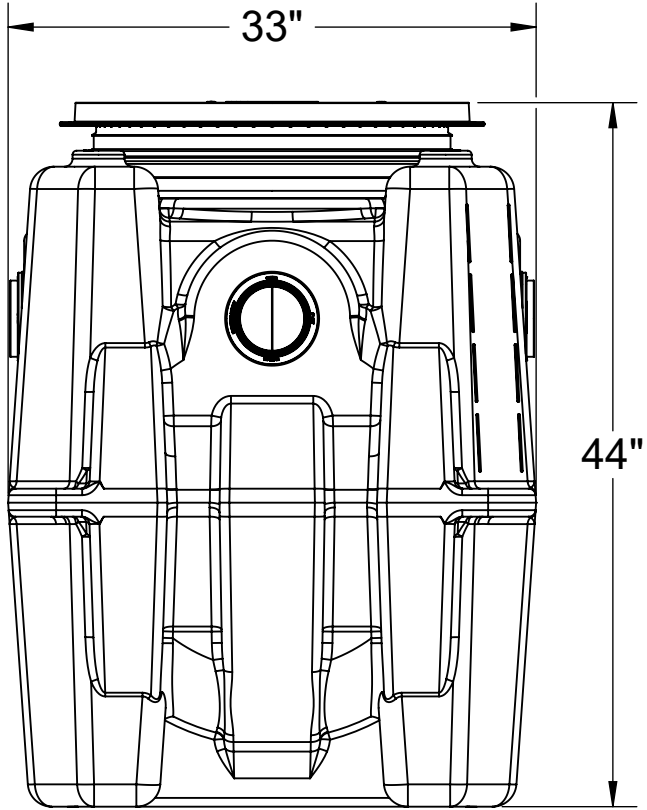
Type D certification does not require a flow control



ISOMETRIC VIEW



SECTION A-A



END VIEW

SPECIFICATION SHEET

MODEL NUMBER:

GB-250

PROPRIETARY AND CONFIDENTIAL

THE INFORMATION CONTAINED IN THIS DRAWING IS THE SOLE PROPERTY OF SCHIER PRODUCTS. ANY REPRODUCTION IN PART OR AS A WHOLE WITHOUT THE WRITTEN PERMISSION OF SCHIER PRODUCTS IS PROHIBITED.

PART NUMBER:

4055-007-02

DESCRIPTION:

GB-250 GREASE INTERCEPTOR 100 GPM / 200 GPM, 4" INLET/OUTLET, H-20 RATED CAST IRON COVERS

DWG BY:

C.SINCLAIR

DATE:

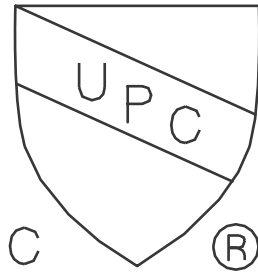
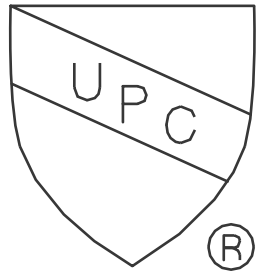
5/4/2022

REV:

-

ECO:

-



SCHIER

6455 Woodland Dr
Shawnee, KS 66218
Tel: 913-951-3300
Fax: 913-951-3399
schierproducts.com