



# StainlessPress®

IsoTubi-USA, By Merit Brass Co.



## Dimensional Catalog

**Innovative Solutions** Driven to Provide Value to Your System

**MERIT  
BRASS**  
DIRECTING THE FLOW OF *Quality*



# StainlessPress®

IsoTubi-USA, By Merit Brass Co.



Merit prides itself on our vendor assessment program as we are committed to providing you and your customers with the highest quality products - our stainless steel press fittings are no exception. Similar to Merit in our commitment to continuous improvement through our registered Quality Management System (ISO 9001:2015), the production and quality control processes of our press fittings are certified by Tüv according to the ISO 9001 norm.

StainlessPress, IsoTubi-USA fittings provide a complete line of mechanically joined press fittings in sizes 1/2" - 2". These fittings are designed to work with schedule 5 or 10 stainless steel IPS pipe. Press joints can be readily achieved using several commercially available pressing tools.

Several press fittings are available with male or female threaded ends to enable connectivity with threaded piping systems. Conversion to flanged systems can be made with flange adapters. Where breaks in pipe work may be needed, the union coupling can be used for quick and easy connections/disconnections. Weld and grooved adapters are available to transition to welded or grooved piping systems.

StainlessPress, IsoTubi-USA fittings use a three-step installation process: cutting and deburring the pipe; marking and inserting pipe into the fitting; and pressing the fitting and pipe together to form a pipe joint using one of the pressing tools identified in the installation instructions.

StainlessPress, IsoTubi-USA fittings make it easy to quickly and safely install piping systems in a wide range of mechanical, industrial, and marine applications. These fittings are made from a highly corrosion resistant 316 stainless steel and are available with a variety of sealing elements, making them suitable for use in numerous applications such as HVAC, plumbing, municipal, and industrial installations.

StainlessPress, IsoTubi-USA fittings incorporate a unique sealing element that provides an important Leak-Before-Press feature. When the fitting and pipe are pressed together, they deform to create a durable permanent pipe joint, while the sealing element compresses to make the joint leakproof. An improperly pressed fitting allows a leak path for liquids and gases, thereby enabling an installer to identify the incorrectly installed fitting easily. The Leak-Before-Press feature significantly reduces the chance of improper joints, helping to ensure a leak free system.

Main advantages of StainlessPress, IsoTubi-USA fittings include the following:

- Quick and safe installations
- Excellent corrosion resistance
- Reduced labor requirements
- Easy handling and light weight
- Dependability, even under severe use conditions
- No flame/fire permit required



# StainlessPress®

IsoTubi-USA, By Merit Brass Co.

## MERIT BRASS

DIRECTING THE FLOW OF *Quality*

## TABLE OF CONTENTS

|   |         |
|---|---------|
| Certifications (North American & Global)    | 4 - 5   |
| Material Specifications                     | 6       |
| Minimum Installation Distances              | 7       |
| Tooling                                     | 8       |
| Minimum Clearance for Pressing              | 9       |
| Installation Instructions                   | 10      |
| Dimensional Data (EPDM & HNBR)              | 11 - 20 |
| Coupling With Stop                          | 11      |
| Coupling Without Stop                       | 11      |
| 90° Elbow                                   | 11      |
| M-F 90° Elbow                               | 12      |
| 45° Elbow                                   | 12      |
| M-F 45° Elbow                               | 12      |
| Equal Tee                                   | 13      |
| Reducing or Unequal Tee                     | 13      |
| Tee & Reducing Tee Adapters                 | 14      |
| (Bushing) Reducer                           | 15      |
| Flange Adapter                              | 16      |
| Cap   | 16      |
| Union                                       | 16      |
| Weld Adapter                                | 17      |
| Groove Transition Nipple/Transition Adapter | 17      |
| Van Stone Flange Adapter                    | 17      |
| Female Adapter                              | 18      |
| Male Adapter                                | 19      |
| Three Piece Ball Valve                      | 20      |
| Notes                                       | 21      |
| Contact Us                                  | 22      |





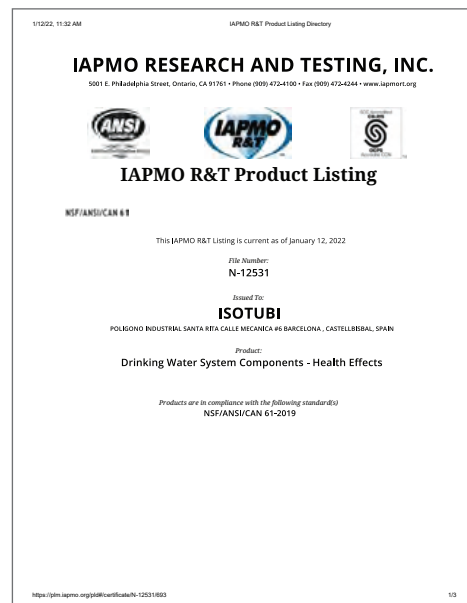
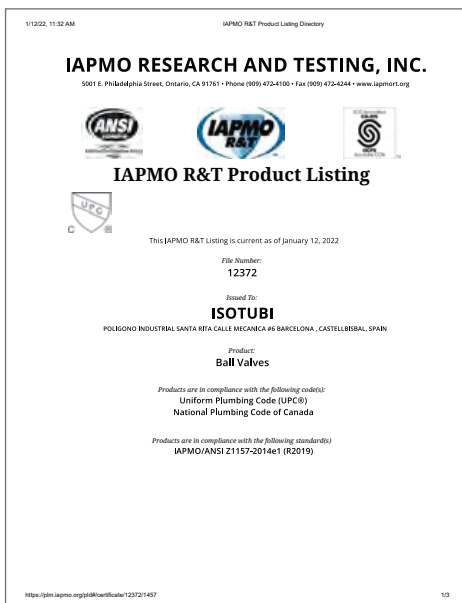
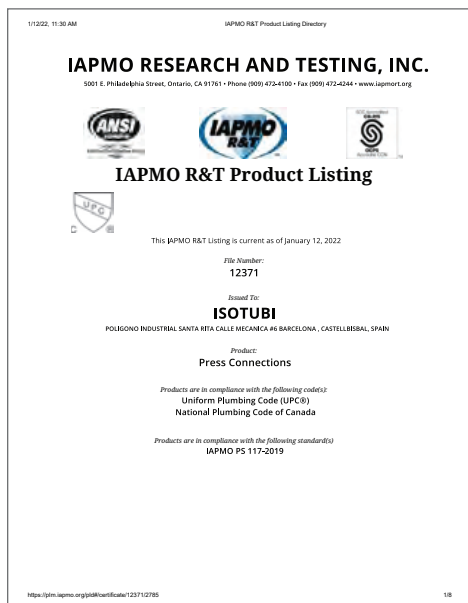
# StainlessPress®

IsoTubi-USA, By Merit Brass Co.



## StainlessPress Fittings North American Certifications

IsoTubi-USA, By Merit Brass Co.







# StainlessPress®

IsoTubi-USA, By Merit Brass Co.



## StainlessPress Fittings North American Certifications

IsoTubi-USA, By Merit Brass Co.

- **IAPMO PS 117** - Press Connections
- **NSF / ANSI / CAN 61** - Drinking Water System Components - Health Effects
- **NSF / ANSI / CAN 372** - Drinking Water System Components - Lead Content
- **FM 1920** - Pipe Couplings and Fittings for Above Ground Fire Protection Systems
- **American Bureau of Shipping** - Product Design Assessment (PDA) Certificate 1 5-PR1438892-PDA, Piping System and Couplings

## StainlessPress Valves with Press Connection Ends

IsoTubi-USA, By Merit Brass Co.

- **IAPMO Z1157** - Ball Valves
- **NSF / ANSI / CAN 61** - Drinking Water System Components - Health Effects
- **NFS / ANSI / CAN 372** - Drinking Water System Components - Lead Content

## StainlessPress Fittings Global Certifications (note 1.4404=AISI 316L Stainless Steel)

IsoTubi-USA, By Merit Brass Co.

- **CSTB** (France) Distribution and Water Drainage Pipes and Fittings
- **BSI** (UK) EN 10352:2010 Stainless Steel Plumbing Fittings - Fittings with Press Ends for Metallic Tubes for Gas
- **Lloyd's Register** (UK & global) - Stainless Steel Welded Pipe System with Couplings for use in Class III Systems where no Fire Endurance Test is Required and in Domestic and Sanitary Systems
- **WRAS** (UK) Section 1180 - Fittings for use with Tube and Pipe
- **CSIRO** (Australia) Fire Sprinkler Systems - Piping/Water Supply - Metallic Fittings and End Connectors/Plumbing and Drainage Products - Stainless Steel Pipes and Tubes for Pressure Applications
- **ÖVGW** (Austria) Stainless Steel Pipes (Material 1.4404) as well as System Connectors as Press Connector Made of 1.4404 for the Drinking Water Installation for Hot and Cold Water Installation
- **SGWA** (Switzerland) Pipes and Fittings (1.4404) Drinking Water Distribution Systems
- **DNV GL** (Norway) Steel Pipes and Fittings. Products approved by this certificate are accepted for installation on vessels classed by DNV GL.
- **ETA** (Denmark) Pipe System Consisting of Stainless Steel Pipes and Press Fittings for Domestic and Ground Water Installations (1.4404)



# StainlessPress®

IsoTubi-USA, By Merit Brass Co.



## MATERIAL SPECIFICATIONS

### FITTING HOUSING:

Stainless Steel per ANSI 316L (Flanges and Valves per ANSI 316) with a wall thickness of 0.065" (1.65mm) and the following characteristics:

- Hygienic material often used in the food, beverage, and pharmaceutical industry
- Higher surface roughness friction factor resulting in less flow loss
- Excellent corrosion resistance

### WORKING PRESSURE:

The working pressure range is from full vacuum to 300PSI (20.7 bar) on Schedule 5 and 10 Stainless Steel Pipe.

### SEALING ELEMENT SPECIFICATIONS

The sealing element gasket is resistant to hot water, aging, and additives commonly used in drinking water. EPDM sealing elements are certified to all requirements of NSF/ANSI/CAN 61 and NSF/ANSI/CAN 372

#### EPDM - Ethylene Propylene Diene Monomer (Black Color)

Service Temperature Range: -4°F to 230°F (-20°C to 110°C)

Recommended for potable water, dilute acids, alkalis, oil free air, and many chemical services. Excellent oxidation resistance. EPDM fittings and valves are certified to all requirements of NSF/ANSI 61, Annex G, and NSF/ANSI 372.

NOT FOR USE WITH HYDROCARBONS.

#### HNBR\* - Hydrogenated Nitrile Butadiene Rubber (Yellow Color)

Service Temperature Range: -13°F to 248°F (-25°C to 120°C)

Recommended for petroleum-based products, propane, vegetable oils, lubricants, salt solutions, ethylene glycol, and gases. Excellent resilience and tear resistance.

NOT FOR USE IN HOT WATER, HOT AIR, ETHERS OR HALOGENATED SOLVENTS.

#### FKM - Fluoroelastomer (Green Color) AVAILABLE UPON REQUEST

Service Temperature Range: -4°F to 356°F (-20°C to 180°C)

Recommended for oxidizing acids, oils, hydraulic fluids, chlorinated hydrocarbons, and process water. Retains mechanical properties at elevated temperatures.

NOT FOR USE WITH AMMONIA.

\*Temp range for valves with HNBR sealing element is -13°F to 248°F (-25°C to 120°C).

Certified to all requirements of NSF/ANSI 61, Annex G, and NSF/ANSI 372.

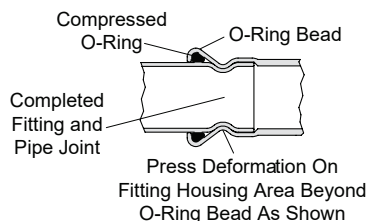
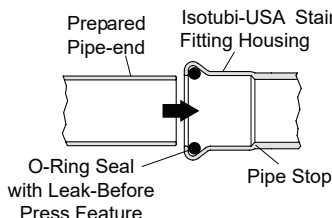
IsoTubi-USA stainless steel fittings have IAPMO certifications and are compliant with ASME B31.1, B31.3 and B31.9 piping codes.

See table below for a detailed summary of approvals.

### ISOTUBI-USA STAINLESS STEEL SYSTEM AGENCY APPROVALS

| Fitting Type          | Thread Type/Bolt Pattern | O-Ring Material | IAPMO | NSF |
|-----------------------|--------------------------|-----------------|-------|-----|
| Non-Threaded Fittings | N/A                      | EPDM            | Y     | Y   |
|                       |                          | HNBR            | Y     | N   |
|                       |                          | FKM             | Y     | N   |
| Threaded Fittings     | ANSI/ASME B.1.20.1       | EPDM            | Y     | Y   |
|                       |                          | HNBR            | Y     | N   |
|                       |                          | FKM             | Y     | N   |
| Flange Adapters       | ANSI 125/250             | EPDM            | Y     | Y   |
|                       |                          | HNBR            | Y     | N   |
|                       |                          | FKM             | Y     | N   |

As shown in the drawings below, the StainlessPress, IsoTubi-USA, by Merit Brass Co. sealing element design provides a unique Leak Before Press feature that quickly identifies during pressure testing any fittings not properly pressed. Fittings pressed incorrectly will allow liquids and gases to bypass the seal. The Leak Before Press feature significantly reduces the chance of improper joints, helping to ensure a leak-free system.





# StainlessPress®

IsoTubi-USA, By Merit Brass Co.



## MINIMUM INSTALLATION DISTANCES

| MINIMUM FITTING DISTANCES |       |  |   |                             |                               |
|---------------------------|-------|--|---|-----------------------------|-------------------------------|
| Nominal Size              | O.D.  | A<br>Minimum Distance Between Fittings | L<br>Minimum Pipe Length Between Fittings | E<br>Socket Insertion Depth | D<br>Fitting Housing Diameter |
| 1/2                       | 0.840 | 0.39                                   | 2.05                                      | 0.83                        | 1.26                          |
| 3/4                       | 1.050 | 0.39                                   | 2.28                                      | 0.94                        | 1.46                          |
| 1                         | 1.315 | 0.39                                   | 2.44                                      | 1.02                        | 1.73                          |
| 1-1/4                     | 1.660 | 0.39                                   | 3.23                                      | 1.22                        | 2.48                          |
| 1-1/2                     | 1.900 | 0.39                                   | 3.23                                      | 1.22                        | 2.48                          |
| 2                         | 2.375 | 0.79                                   | 4.33                                      | 1.22                        | 3.08                          |

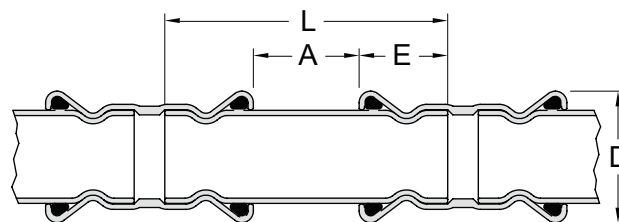
Minimum Fitting Distance is the recommended minimum distances between fittings to permit mechanical forming of the pipe during the pressing process.

StainlessPress, IsoTubi-USA fittings are designed for use with Schedule 5 or 10 Type 304/304L or 316/316L Stainless Steel Pipe conforming to ASTM A-312. Refer to the Pipe Tolerance and Hanger Supports table (to the right) for pipe tolerance specifications. Consult local authority having jurisdiction for additional requirements.

StainlessPress, IsoTubi-USA fittings can be suspended on hangers, brackets, or other supports with the maximum vertical and horizontal spacing as indicated in the Pipe Tolerance and Hanger Supports table (to the right). Details by pipe manufacturers or application requirements may specify additional hanging requirements.

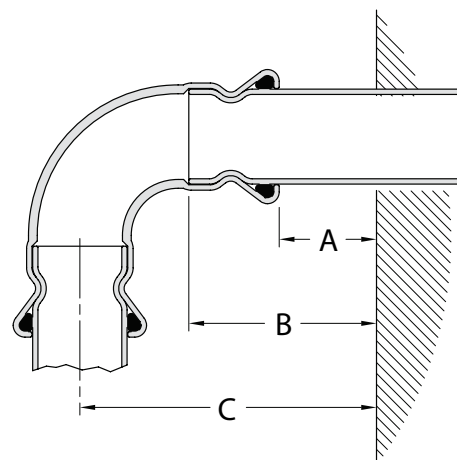
Proper bearing and spacing of supports is necessary to prevent excessive bending or sagging when supporting pipe.

For locations where there is insufficient access to accommodate the pressing tool, consider prefabricating the pipework or using an alternate joining solution. Tables below show the minimum clearances required for wall and corner installations.



| PIPE TOLERANCE AND HANGER SUPPORTS |       |                         |                            |                    |                      |
|------------------------------------|-------|-------------------------|----------------------------|--------------------|----------------------|
| Pipe Size                          |       | Pipe Tolerance          |                            | Pipework Support   |                      |
| Nominal Size                       | O.D.  | Pipe O.D. Tolerance +/- | Pipe Wall Thickness Sch. 5 | Vertical Intervals | Horizontal Intervals |
| 1/2                                | 0.840 | 0.004                   | 0.065                      | 6                  | 4                    |
| 3/4                                | 1.050 | 0.006                   | 0.065                      | 6                  | 5                    |
| 1                                  | 1.315 | 0.006                   | 0.065                      | 8                  | 6                    |
| 1-1/4                              | 1.660 | 0.008                   | 0.065                      | 10                 | 8                    |
| 1-1/2                              | 1.900 | 0.008                   | 0.065                      | 10                 | 8                    |
| 2                                  | 2.375 | 0.011                   | 0.065                      | 10                 | 8                    |

| MINIMUM CLEARANCE FOR PERPENDICULAR RUNS |       |                                  |  |  |
|--|-------|----------------------------------|--|--|
| Pipe Size                                |       | A                                | B  | C  |
| Nominal Size                             | O.D.  | Minimum Wall to Fitting Distance | Minimum Horizontal Pipe Distance from Wall | Minimum Vertical Pipe Distance from Wall |
| 1/2                                      | 0.840 | 1.38                             | 2.20                                       | 3.78                                     |
| 3/4                                      | 1.050 | 1.38                             | 2.32                                       | 4.21                                     |
| 1  | 1.315 | 1.38                             | 2.40                                       | 4.76                                     |
| 1-1/4                                    | 1.660 | 1.38                             | 2.50                                       | 4.92                                     |
| 1-1/2                                    | 1.900 | 1.38                             | 2.60                                       | 5.08                                     |
| 2  | 2.375 | 1.38                             | 3.15                                       | 6.38                                     |





# StainlessPress®

IsoTubi-USA, By Merit Brass Co.



## Tools, Kits, Jaws & Rings

| Milwaukee Part # | Tooling Name  |
|------------------|---|
| 2773-20L         | M18™ Force Logic™ Long Throw Press Tool (Use M18 Jaws)            |
| 2773-22L         | M18™ Force Logic™ Long Throw Press Tool Kit (With 1/2" - 1" Jaws) |
| 49-16-2650S      | M18™ 1/2" IPS-IA Jaw  |
| 49-16-2651S      | M18™ 3/4" IPS-IA Jaw  |
| 49-16-2652S      | M18™ 1" IPS-IA Jaw  |
| 49-16-2653S      | M18™ 1-1/4" IPS-IA Jaw  |
| 49-16-2654S      | M18™ 1-1/2" IPS-IA Jaw  |
| 49-16-2655S      | M18™ 2" IPS-IA Jaw  |
| 49-16-2659       | Ring Jaw 1 (2-1/2" - 4")  |
| 49-16-2659S      | Ring Jaw 2 (1-1/2" - 2")  |
| 49-16-2691S      | M18™ Force Logic™ Long Throw IPS-IA Press Ring Kit (1-1/4" - 2")  |

Milwaukee press fitting tools are battery operated, allowing piping installations where wired power is not available. Diameter specific exchangeable jaws allow for quick changeover (see specific information above).





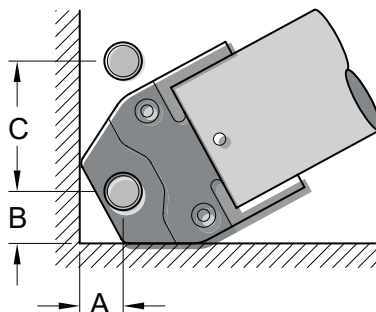
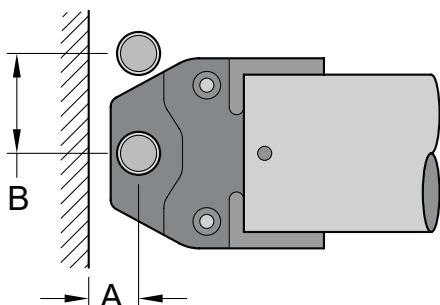


# StainlessPress®

IsoTubi-USA, By Merit Brass Co.



## MINIMUM CLEARANCE FOR PRESSING



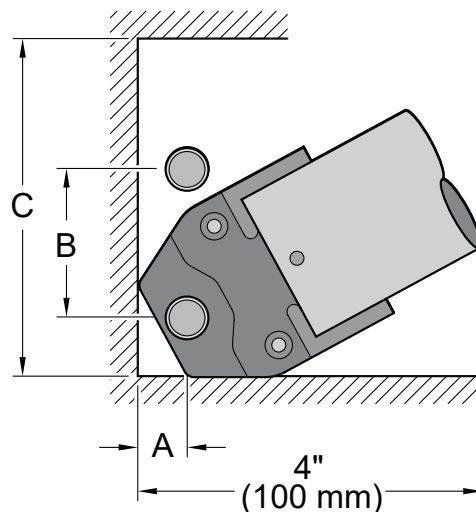
| MINIMUM CLEARANCE FOR PERPENDICULAR RUNS |       |                |                         |
|--|-------|----------------|-------------------------|
| Pipe Size                                |       | A              | B                       |
| Nominal Size                             | O.D.  | Wall Clearance | Parallel Pipe Clearance |
| 1/2                                      | 0.840 | 0.875          | 2.25                    |
| 3/4                                      | 1.050 | 0.875          | 2.375                   |
| 1  | 1.315 | 1.00           | 2.625                   |
| 1-1/4                                    | 1.660 | 1.188          | 3.00                    |
| 1-1/2                                    | 1.900 | 1.188          | 3.00                    |
| 2  | 2.375 | 2.375          | 5.625                   |
| 2*                                       | 2.375 | 3.00           | 4.625                   |

| MINIMUM CLEARANCE FOR PERPENDICULAR RUNS |       |                |                |                         |
|--|-------|----------------|----------------|-------------------------|
| Pipe Size                                |       | A              | B              | C                       |
| Nominal Size                             | O.D.  | Wall Clearance | Wall Clearance | Parallel Pipe Clearance |
| 1/2                                      | 0.840 | 0.875          | 1.25           | 3.00                    |
| 3/4                                      | 1.050 | 1.00           | 1.125          | 3.00                    |
| 1  | 1.315 | 1.25           | 1.375          | 2.625                   |
| 1-1/4                                    | 1.660 | 1.25           | 1.75           | 3.00                    |
| 1-1/2                                    | 1.900 | 1.25           | 1.75           | 3.00                    |
| 2  | 2.375 | 2.375          | 4.375          | 5.625                   |
| 2*                                       | 2.375 | 3.00           | 3.00           | 4.625                   |

\*Loop-Type Jaw clearances  
Dimensions may vary based on pressing tool. Refer to pressing tool manufacturer's instructions for specific dimensions.  
See page 10 for installation instructions.

\*Loop-Type Jaw clearances  
Dimensions may vary based on pressing tool. Refer to pressing tool manufacturer's instructions for specific dimensions.  
See page 10 for installation instructions.

| MINIMUM CLEARANCE FOR PERPENDICULAR RUNS |       |                |                         |                      |
|--|-------|----------------|-------------------------|----------------------|
| Pipe Size                                |       | A              | B                       | C                    |
| Nominal Size                             | O.D.  | Wall Clearance | Parallel Pipe Clearance | Minimum Recess Width |
| 1/2                                      | 0.840 | 0.875          | 3.00                    | 0.625                |
| 3/4                                      | 1.050 | 1.00           | 3.00                    | 5.25                 |
| 1  | 1.315 | 1.25           | 2.625                   | 6.00                 |
| 1-1/4                                    | 1.660 | 1.25           | 2.625                   | 6.75                 |
| 1-1/2                                    | 1.900 | 1.25           | 2.625                   | 6.75                 |
| 2  | 2.375 | 2.375          | 5.625                   | 14.25                |
| 2*                                       | 2.375 | 3.00           | 4.625                   | 10.50                |



\*Loop-Type Jaw clearances  
Dimensions may vary based on pressing tool. Refer to pressing tool manufacturer's instructions for specific dimensions.  
See page 10 for installation instructions.



# StainlessPress®

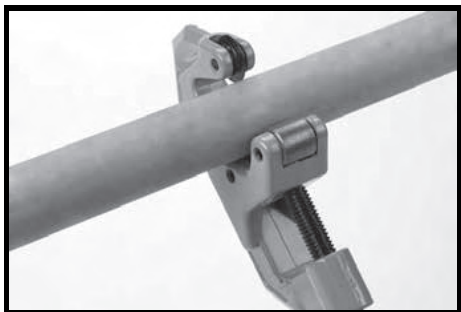
IsoTubi-USA, By Merit Brass Co.

**MERIT  
BRASS**  
DIRECTING THE FLOW OF *Quality*

## INSTALLATION INSTRUCTIONS

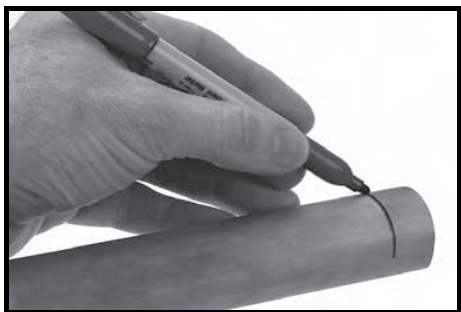
IsoTubi-USA Stainless Steel Fittings and Valves must be installed in accordance with this section.

Always ensure that the pressing tool and its jaws are appropriate for the schedule of pipe and size of fitting or valve. Always refer to the pressing tool manufacturer's instructions for operation and maintenance prior to use with IsoTubi-USA Stainless Steel Fittings and Valves. *Failure to follow these instructions may void the warranty.*



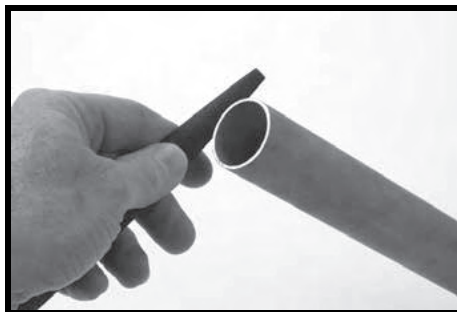
### 1. SELECT & CUT PIPE

Select the correct size of pipe, fitting or valve for the job. Ensure that both are clean and free from damage and imperfections. Cut pipe squarely, making sure to avoid jagged edges or scratching and denting pipe surface.



### 4. MEASURE & MARK PIPE

With a permanent marker, mark the insertion depth at the appropriate distance from the end of the pipe.



### 2. DEBURR PIPE

Deburr inside and outside of pipe, removing debris that can impede flow or damage the O-Ring Seal material. Clean pipe surface of oil and debris.

### 5. INSERT PIPE INTO FITTINGS

Insert the pipe until it contacts the pipe stop of the fitting or valve. With the fitting or valve on the pipe, the insertion mark should be visible.

Couplings without stops must be centered between the pipe ends. However, the minimum pipe insertion depth must be maintained and marked.

### 6. VERIFY TOOL & JAW

Using an approved Press Tool from the Tooling Table, verify the Tool Jaw is the appropriate size for the fitting. For wall and tube clearances, refer to the pressing tool manufacturer's instructions. *Failure to follow these instructions may void the warranty.*



### PRESSING TOOLS

The IsoTubi-USA system uses only Type M press configuration and can be installed using any of the press tools shown in the table above and on page 8. Tools are powered with a rechargeable battery. Each tool has a unique set of easily interchangeable jaws/collars for each pipe size.



### 3. CHECK PRESS FITTINGS

Check the press fittings and valves to ensure the O-Ring Seal material is appropriate for the application. The color of the O-Ring Seal indicates the material type. Select the O-Ring Seal based on the intended application.

### 7. POSITION TOOL & SQUEEZE TRIGGER

Position the Tool Jaws on the raised surface of the fitting or valve, then squeeze the trigger until the pressing action is complete. The pressing will complete a cycle and then stop.

Do not release the trigger until the pressing action is complete. Incomplete presses may reduce the pressure retention capabilities of the joint and lead to subsequent system leakage.

### 8. REMOVE TOOL FROM FITTING & INSPECT

Release the trigger and remove the Jaw from the fitting. Inspect the connection to make sure the fitting or valve insertion mark is in the appropriate place.

### INSERTION MARK LOCATION

| Nominal Size | Insertion Mark Distance |
|--------------|-------------------------|
| 1/2          | 0.875                   |
| 3/4          | 1.000                   |
| 1            | 1.063                   |
| 1-1/4        | 1.16                    |
| 1-1/2        | 1.250                   |
| 2            | 1.813                   |

### PRESSING TOOLS

Milwaukee's M18™ Force Logic™ Long Throw Press Tool

See Page 8 for Associated Jaws and Rings



# StainlessPress®

IsoTubi-USA, By Merit Brass Co.

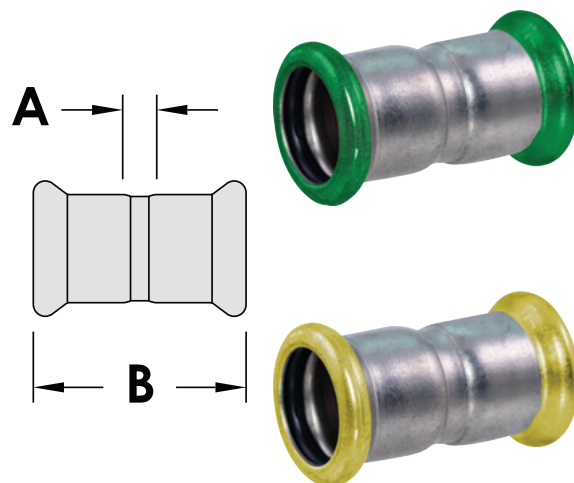
# MERIT BRASS

DIRECTING THE FLOW OF *Quality*

## Coupling With Stop

Press x Press

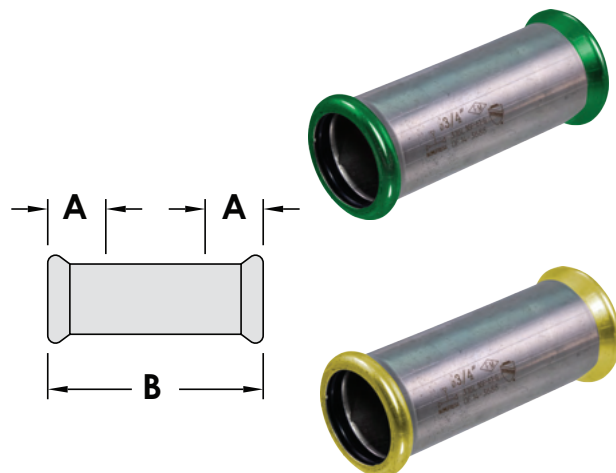
| Part Number  |               | Size    | Dimensions |      | Weight lbs |
|--------------|---------------|---------|------------|------|------------|
|              |               | Inches  | Inches     |      |            |
| EPDM         | HNBR          | Nominal | A          | B    |            |
| MBF011/26GE  | MBF011/26GEH  | 1/2     | 0.42       | 2.09 | 0.13       |
| MBF013/46GE  | MBF013/46GEH  | 3/4     | 0.44       | 2.33 | 0.18       |
| MBF0116GE    | MBF0116GEH    | 1       | 0.43       | 2.48 | 0.23       |
| MBF0111/46GE | MBF0111/46GEH | 1-1/4   | 0.71       | 3.07 | 0.32       |
| MBF0111/26GE | MBF0111/26GEH | 1-1/2   | 0.43       | 2.84 | 0.40       |
| MBF0126GE    | MBF0126GEH    | 2       | 0.50       | 4.05 | 0.74       |



## Coupling Without Stop

Press x Press

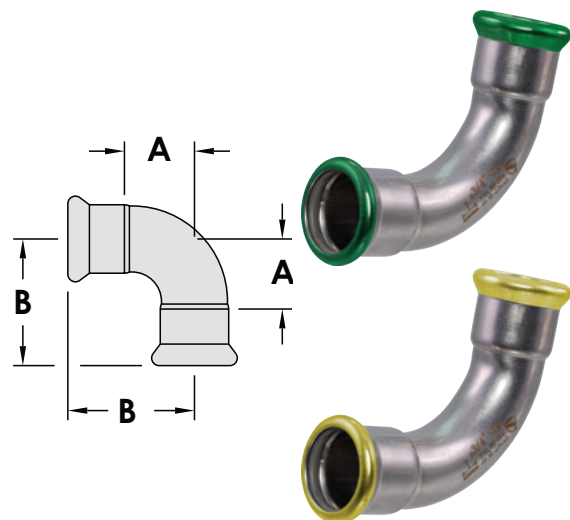
| Part Number  |               | Size    | Dimensions |      | Weight lbs |
|--------------|---------------|---------|------------|------|------------|
|              |               | Inches  | Inches     |      |            |
| EPDM         | HNBR          | Nominal | A          | B    |            |
| MBF021/26GE  | MBF021/26GEH  | 1/2     | 0.83       | 2.95 | 0.18       |
| MBF023/46GE  | MBF023/46GEH  | 3/4     | 0.95       | 3.40 | 0.25       |
| MBF0216GE    | MBF0216GEH    | 1       | 1.02       | 3.83 | 0.34       |
| MBF0211/46GE | MBF0211/46GEH | 1-1/4   | 1.18       | 4.49 | 0.46       |
| MBF0211/26GE | MBF0211/26GEH | 1-1/2   | 1.20       | 4.81 | 0.63       |
| MBF0226GE    | MBF0226GEH    | 2       | 1.77       | 6.76 | 1.13       |



## 90° Elbow

Press x Press

| Part Number  |               | Size    | Dimensions |      | Weight lbs |
|--------------|---------------|---------|------------|------|------------|
|              |               | Inches  | Inches     |      |            |
| EPDM         | HNBR          | Nominal | A          | B    |            |
| MBF031/26GE  | MBF031/26GEH  | 1/2     | 1.57       | 2.41 | 0.22       |
| MBF033/46GE  | MBF033/46GEH  | 3/4     | 1.89       | 2.84 | 0.33       |
| MBF0316GE    | MBF0316GEH    | 1       | 2.37       | 3.40 | 0.48       |
| MBF0311/46GE | MBF0311/46GEH | 1-1/4   | 2.20       | 3.39 | 0.56       |
| MBF0311/26GE | MBF0311/26GEH | 1-1/2   | 2.56       | 3.76 | 0.79       |
| MBF0326GE    | MBF0326GEH    | 2       | 3.23       | 5.00 | 1.39       |





# StainlessPress®

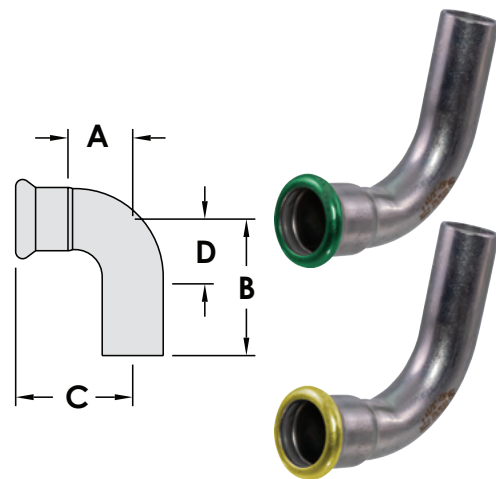
IsoTubi-USA, By Merit Brass Co.

**MERIT  
BRASS**  
DIRECTING THE FLOW OF *Quality*

## 90° Street Elbow

Male x Female

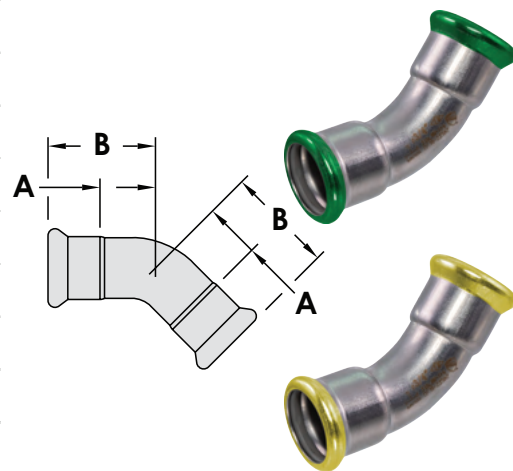
| Part Number  |               | Size    | Dimensions |      |      |      | Weight lbs |
|--------------|---------------|---------|------------|------|------|------|------------|
|              |               | Inches  | Inches     |      |      |      |            |
| EPDM         | HNBR          | Nominal | A          | B    | C    | D    |            |
| MBF041/26GE  | MBF041/26GEH  | 1/2     | 1.57       | 2.95 | 2.41 | 1.34 | 0.24       |
| MBF043/46GE  | MBF043/46GEH  | 3/4     | 1.89       | 3.27 | 2.84 | 1.69 | 0.33       |
| MBF0416GE    | MBF0416GEH    | 1       | 2.37       | 3.82 | 3.40 | 2.13 | 0.37       |
| MBF0411/46GE | MBF0411/46GEH | 1-1/4   | 2.20       | 3.80 | 3.39 | 1.97 | 0.57       |
| MBF0411/26GE | MBF0411/26GEH | 1-1/2   | 2.48       | 4.21 | 3.69 | 2.24 | 0.77       |
| MBF0426GE    | MBF0426GEH    | 2       | 3.23       | 5.59 | 5.00 | 3.23 | 1.34       |



## 45° Elbow

Press x Press

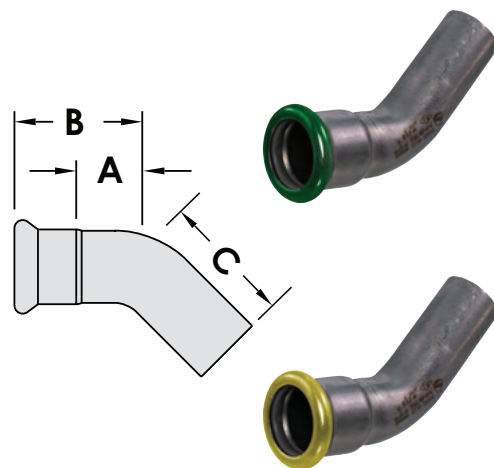
| Part Number  |               | Size    | Dimensions |      | Weight lbs |
|--------------|---------------|---------|------------|------|------------|
|              |               | Inches  | Inches     |      |            |
| EPDM         | HNBR          | Nominal | A          | B    |            |
| MBF051/26GE  | MBF051/26GEH  | 1/2     | 0.79       | 1.62 | 0.18       |
| MBF053/46GE  | MBF053/46GEH  | 3/4     | 0.90       | 1.85 | 0.24       |
| MBF0516GE    | MBF0516GEH    | 1       | 1.13       | 2.14 | 0.37       |
| MBF0511/46GE | MBF0511/46GEH | 1-1/4   | 1.05       | 2.23 | 0.50       |
| MBF0511/26GE | MBF0511/26GEH | 1-1/2   | 1.17       | 2.37 | 0.59       |
| MBF0526GE    | MBF0526GEH    | 2       | 1.48       | 3.24 | 1.06       |



## 45° Street Elbow

Male x Female

| Part Number  |               | Size    | Dimensions |      |      | Weight lbs |
|--------------|---------------|---------|------------|------|------|------------|
|              |               | Inches  | Inches     |      |      |            |
| EPDM         | HNBR          | Nominal | A          | B    | C    |            |
| MBF061/26GE  | MBF061/26GEH  | 1/2     | 0.79       | 1.62 | 2.25 | 0.20       |
| MBF063/46GE  | MBF063/46GEH  | 3/4     | 0.90       | 1.85 | 2.26 | 0.26       |
| MBF0616GE    | MBF0616GEH    | 1       | 1.13       | 2.14 | 2.49 | 0.37       |
| MBF0611/46GE | MBF0611/46GEH | 1-1/4   | 1.05       | 2.23 | 2.63 | 0.51       |
| MBF0611/26GE | MBF0611/26GEH | 1-1/2   | 1.17       | 2.37 | 2.89 | 0.60       |
| MBF0626GE    | MBF0626GEH    | 2       | 1.48       | 3.24 | 3.83 | 1.06       |

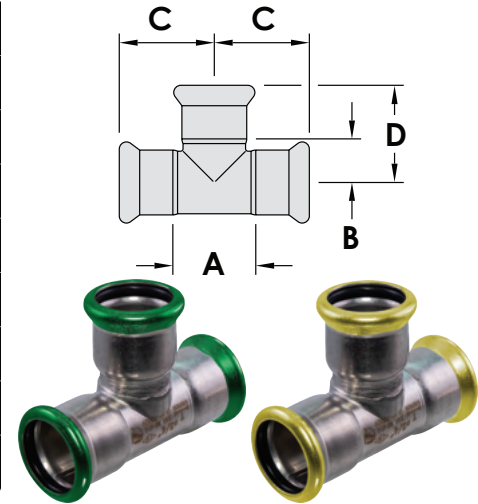




## Equal Tee

Press x Press x Press

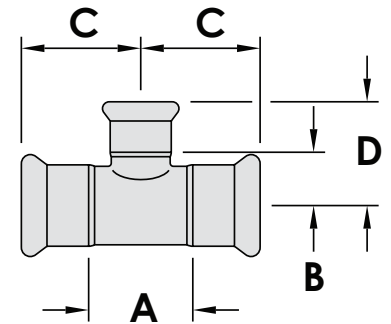
| Part Number  |               | Size    | Dimensions |      |      |      | Weight lbs |
|--------------|---------------|---------|------------|------|------|------|------------|
|              |               | Inches  | Inches     |      |      |      |            |
| EPDM         | HNBR          | Nominal | A          | B    | C    | D    |            |
| MBF161/26GE  | MBF161/26GEH  | 1/2     | 1.28       | 0.80 | 1.48 | 1.64 | 0.24       |
| MBF163/46GE  | MBF163/46GEH  | 3/4     | 1.50       | 0.92 | 1.70 | 1.87 | 0.33       |
| MBF1616GE    | MBF1616GEH    | 1       | 1.78       | 1.07 | 1.91 | 2.09 | 0.46       |
| MBF1611/46GE | MBF1611/46GEH | 1-1/4   | 2.13       | 1.28 | 2.24 | 2.46 | 0.59       |
| MBF1611/26GE | MBF1611/26GEH | 1-1/2   | 3.19       | 1.42 | 2.80 | 2.63 | 0.92       |
| MBF1626GE    | MBF1626GEH    | 2       | 3.22       | 1.65 | 3.39 | 3.43 | 1.48       |



## Reducing Tee

Press x Press x Press

| Part Number          |                       | Size                  | Dimensions |      |      |      | Weight lbs |
|----------------------|-----------------------|-----------------------|------------|------|------|------|------------|
|                      |                       | Inches                | Inches     |      |      |      |            |
| EPDM                 | HNBR                  | Nominal               | A          | B    | C    | D    |            |
| MBF153/41/23/46GE    | MBF153/41/23/46GEH    | 3/4 x 3/4 x 1/2       | 1.50       | 0.91 | 1.70 | 1.74 | 0.31       |
| MBF1511/216GE        | MBF1511/216GEH        | 1 x 1 x 1/2           | 1.78       | 1.06 | 1.91 | 1.89 | 0.40       |
| MBF1513/416GE        | MBF1513/416GEH        | 1 x 1 x 3/4           | 1.78       | 1.07 | 1.91 | 2.02 | 0.42       |
| MBF1511/41/211/46GE  | MBF1511/41/211/46GEH  | 1-1/4 x 1-1/4 x 1/2   | 2.13       | 1.19 | 2.25 | 2.02 | 0.51       |
| MBF1511/43/411/46GE  | MBF1511/43/411/46GEH  | 1-1/4 x 1-1/4 x 3/4   | 2.13       | 1.20 | 2.25 | 2.15 | 0.53       |
| MBF1511/4111/46GE    | MBF1511/4111/46GEH    | 1-1/4 x 1-1/4 x 1     | 2.12       | 1.20 | 2.24 | 2.22 | 0.56       |
| MBF1511/21/211/26GE  | MBF1511/21/211/26GEH  | 1-1/2 x 1-1/2 x 1/2   | 3.19       | 1.39 | 2.80 | 2.23 | 0.79       |
| MBF1511/23/411/26GE  | MBF1511/23/411/26GEH  | 1-1/2 x 1-1/2 x 3/4   | 3.19       | 1.37 | 2.80 | 2.34 | 0.81       |
| MBF1511/2111/26GE    | MBF1511/2111/26GEH    | 1-1/2 x 1-1/2 x 1     | 3.19       | 1.42 | 2.80 | 2.45 | 0.84       |
| MBF1511/211/411/26GE | MBF1511/211/411/26GEH | 1-1/2 x 1-1/2 x 1-1/4 | 3.19       | 1.50 | 2.80 | 2.68 | 0.88       |
| MBF1521/226GE        | MBF1521/226GEH        | 2 x 2 x 1/2           | 3.22       | 1.60 | 3.39 | 2.44 | 1.17       |
| MBF1523/426GE        | MBF1523/426GEH        | 2 x 2 x 3/4           | 3.22       | 1.68 | 3.39 | 2.63 | 1.19       |
| MBF152126GE          | MBF152126GEH          | 2 x 2 x 1             | 3.22       | 1.61 | 3.39 | 2.66 | 1.23       |
| MBF15211/426GE       | MBF15211/426GEH       | 2 x 2 x 1-1/4         | 3.22       | 1.73 | 3.38 | 2.91 | 1.27       |
| MBF15211/226GE       | MBF15211/226GEH       | 2 x 2 x 1-1/2         | 3.22       | 1.65 | 3.39 | 2.86 | 1.32       |





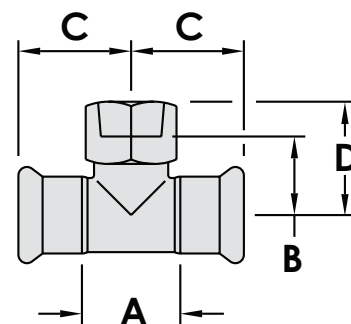
# StainlessPress®

IsoTubi-USA, By Merit Brass Co.



## Tee & Reducing Tee Adapters

| Part Number      |                   | Size                  | Dimensions |      |      |      | Weight lbs |
|------------------|-------------------|-----------------------|------------|------|------|------|------------|
|                  |                   | Inches                | Inches     |      |      |      |            |
| EPDM             | HNBR              | Nominal               | A          | B    | C    | D    |            |
| MBF121/21/26GE   | MBF121/21/26GEH   | 1/2 x 1/2 x 1/2       | 1.28       | 0.93 | 1.48 | 1.52 | 0.26       |
| MBF121/23/46GE   | MBF121/23/46GEH   | 1/2 x 1/2 x 3/4       | 1.28       | 1.30 | 1.48 | 1.84 | 0.37       |
| MBF123/41/26GE   | MBF123/41/26GEH   | 3/4 x 3/4 x 1/2       | 1.50       | 0.96 | 1.70 | 1.63 | 0.33       |
| MBF123/43/46GE   | MBF123/43/46GEH   | 3/4 x 3/4 x 3/4       | 1.50       | 1.15 | 1.70 | 1.81 | 0.40       |
| MBF123/416GE     | MBF123/416GEH     | 3/4 x 3/4 x 1         | 1.50       | 1.12 | 1.70 | 1.97 | 0.46       |
| MBF1211/26GE     | MBF1211/26GEH     | 1 x 1 x 1/2           | 1.78       | 1.11 | 1.91 | 1.78 | 0.42       |
| MBF1213/46GE     | MBF1213/46GEH     | 1 x 1 x 3/4           | 1.78       | 1.26 | 1.91 | 1.96 | 0.48       |
| MBF12111/46GE    | MBF12111/46GEH    | 1 x 1 x 1-1/4         | 1.78       | 1.59 | 1.92 | 2.43 | 0.91       |
| MBF1211/41/26GE  | MBF1211/41/26GEH  | 1-1/4 x 1-1/4 x 1/2   | 2.13       | 1.24 | 2.25 | 1.92 | 0.57       |
| MBF1211/43/46GE  | MBF1211/43/46GEH  | 1-1/4 x 1-1/4 x 3/4   | 2.13       | 1.39 | 2.25 | 2.07 | 0.62       |
| MBF1211/416GE    | MBF1211/416GEH    | 1-1/4 x 1-1/4 x 1     | 2.13       | 1.35 | 2.25 | 2.11 | 0.75       |
| MBF1211/411/46GE | MBF1211/411/46GEH | 1-1/4 x 1-1/4 x 1-1/4 | 2.13       | 1.67 | 2.24 | 2.51 | 1.00       |
| MBF1211/21/26GE  | MBF1211/21/26GEH  | 1-1/2 x 1-1/2 x 1/2   | 3.19       | 1.44 | 2.80 | 2.12 | 0.85       |
| MBF1211/23/46GE  | MBF1211/23/46GEH  | 1-1/2 x 1-1/2 x 3/4   | 3.19       | 1.57 | 2.80 | 2.25 | 0.91       |
| MBF1211/216GE    | MBF1211/216GEH    | 1-1/2 x 1-1/2 x 1     | 3.19       | 1.59 | 2.80 | 2.33 | 1.03       |
| MBF1211/211/26GE | MBF1211/211/26GEH | 1-1/2 x 1-1/2 x 1-1/2 | 3.19       | 1.54 | 2.80 | 2.64 | 1.27       |
| MBF1221/26GE     | MBF1221/26GEH     | 2 x 2 x 1/2           | 3.22       | 1.65 | 3.39 | 2.32 | 1.19       |
| MBF1223/46GE     | MBF1223/46GEH     | 2 x 2 x 3/4           | 3.22       | 1.86 | 3.39 | 2.54 | 1.26       |
| MBF12216GE       | MBF12216GEH       | 2 x 2 x 1             | 3.22       | 1.78 | 3.39 | 2.52 | 1.32       |
| MBF12226GE       | MBF12226GEH       | 2 x 2 x 2             | 3.22       | 2.26 | 3.39 | 3.19 | 1.90       |



Press x Press x NPT





# StainlessPress®

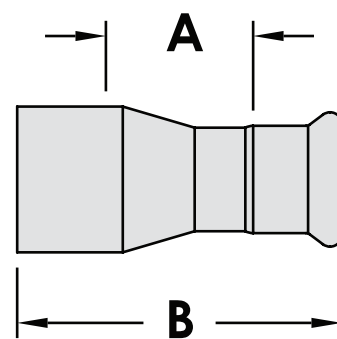
IsoTubi-USA, By Merit Brass Co.



## Bushing Reducer

FTG x Press

| Part Number      |                   | Size          | Dimensions |      | Weight lbs |
|------------------|-------------------|---------------|------------|------|------------|
|                  |                   | Inches        | Inches     |      |            |
| EPDM             | HNBR              | Nominal       | A          | B    |            |
| MBF143/41/26GE   | MBF143/41/26GEH   | 3/4 x 1/2     | 0.63       | 3.04 | 0.18       |
| MBF1411/26GE     | MBF1411/26GEH     | 1 x 1/2       | 0.66       | 3.26 | 0.23       |
| MBF1413/46GE     | MBF1413/46GEH     | 1 x 3/4       | 1.00       | 3.76 | 0.26       |
| MBF1411/41/26GE  | MBF1411/41/26GEH  | 1-1/4 x 1/2   | 0.72       | 3.32 | 0.27       |
| MBF1411/43/46GE  | MBF1411/43/46GEH  | 1-1/4 x 3/4   | 1.00       | 3.25 | 0.26       |
| MBF1411/416GE    | MBF1411/416GEH    | 1-1/4 x 1     | 0.84       | 3.52 | 0.31       |
| MBF1411/21/26GE  | MBF1411/21/26GEH  | 1-1/2 x 1/2   | 0.55       | 3.47 | 0.33       |
| MBF1411/23/46GE  | MBF1411/23/46GEH  | 1-1/2 x 3/4   | 0.76       | 3.55 | 0.55       |
| MBF1411/216GE    | MBF1411/216GEH    | 1-1/2 x 1     | 1.19       | 4.30 | 0.39       |
| MBF1411/211/46GE | MBF1411/211/46GEH | 1-1/2 x 1-1/4 | 0.93       | 4.19 | 0.44       |
| MBF1421/26GE     | MBF1421/26GEH     | 2 x 1/2       | 0.67       | 4.17 | 0.53       |
| MBF1423/46GE     | MBF1423/46GEH     | 2 x 3/4       | 0.98       | 4.27 | 0.35       |
| MBF14216GE       | MBF14216GEH       | 2 x 1         | 0.91       | 4.33 | 0.57       |
| MBF14211/46GE    | MBF14211/46GEH    | 2 x 1-1/4     | 0.88       | 4.66 | 0.63       |
| MBF14211/26GE    | MBF14211/26GEH    | 2 x 1-1/2     | 1.30       | 4.77 | 0.72       |





# StainlessPress®

IsoTubi-USA, By Merit Brass Co.

# MERIT BRASS

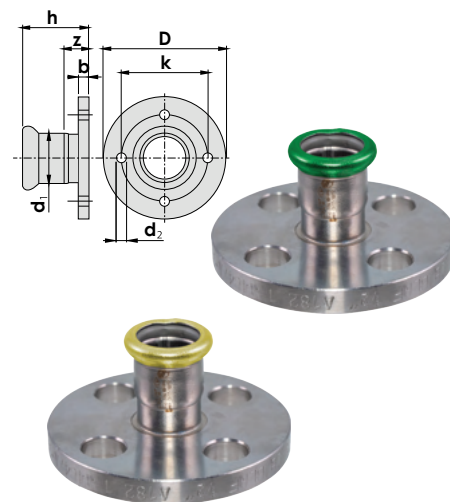
DIRECTING THE FLOW OF *Quality*

## Flange Adapter

Press x ANSI 125/150 Flange

| Part Number  |               | Size    | Dimensions |      |      |                |                |      |    |      | Weight lbs |
|--------------|---------------|---------|------------|------|------|----------------|----------------|------|----|------|------------|
|              |               | Inches  | Inches     |      |      |                |                |      |    |      |            |
| EPDM         | HNBR          | Nominal | D          | k    | b    | d <sub>1</sub> | d <sub>2</sub> | h    | n* | z    |            |
| MBF191/26GE  | MBF191/26GEH  | 1/2     | 3.50       | 2.37 | 0.38 | 1.37           | 0.62           | 1.85 | 4  | 1.02 | 0.90       |
| MBF193/46GE  | MBF193/46GEH  | 3/4     | 3.94       | 2.75 | 0.44 | 1.69           | 0.62           | 2.21 | 4  | 1.27 | 1.30       |
| MBF1916GE    | MBF1916GEH    | 1       | 4.33       | 3.13 | 0.50 | 2.00           | 0.62           | 2.52 | 4  | 1.50 | 1.83       |
| MBF1911/46GE | MBF1911/46GEH | 1-1/4   | 4.53       | 3.50 | 0.56 | 2.50           | 0.62           | 2.32 | 4  | 1.14 | 2.10       |
| MBF1911/26GE | MBF1911/26GEH | 1-1/2   | 4.92       | 3.87 | 0.63 | 2.87           | 0.62           | 3.40 | 4  | 2.20 | 3.03       |
| MBF1926GE    | MBF1926GEH    | 2       | 5.91       | 4.75 | 0.69 | 3.63           | 0.75           | 4.71 | 4  | 2.94 | 4.91       |

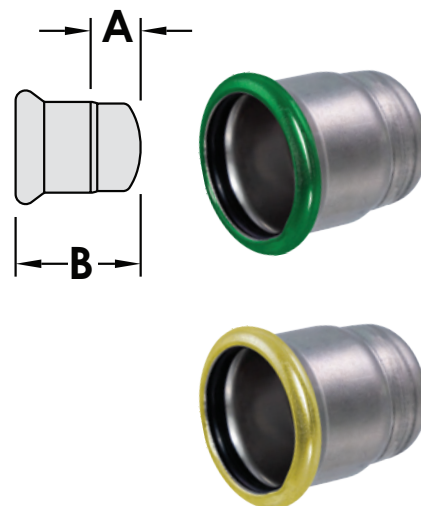
n\* = number of such. Ø d<sub>2</sub> Flange material is AISI 304 and the body is AISI 316



## Cap

Press

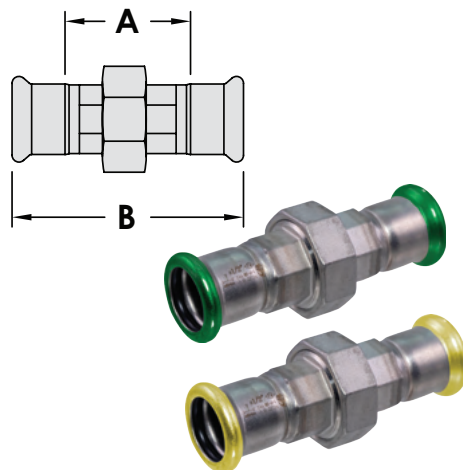
| Part Number  |               | Size    | Dimensions |      | Weight lbs |
|--------------|---------------|---------|------------|------|------------|
|              |               | Inches  | Inches     |      |            |
| EPDM         | HNBR          | Nominal | A          | B    |            |
| MBF211/26GE  | MBF211/26GEH  | 1/2     | 0.85       | 1.68 | 0.09       |
| MBF213/46GE  | MBF213/46GEH  | 3/4     | 0.75       | 1.70 | 0.13       |
| MBF2116GE    | MBF2116GEH    | 1       | 0.83       | 1.85 | 0.18       |
| MBF2111/46GE | MBF2111/46GEH | 1-1/4   | 0.93       | 2.11 | 0.22       |
| MBF2111/26GE | MBF2111/26GEH | 1-1/2   | 0.95       | 2.15 | 0.33       |
| MBF2126GE    | MBF2126GEH    | 2       | 1.10       | 2.87 | 0.55       |



## Union

Press x Press

| Part Number  |               | Size    | Dimensions |      | Weight lbs |
|--------------|---------------|---------|------------|------|------------|
|              |               | Inches  | Inches     |      |            |
| EPDM         | HNBR          | Nominal | A          | B    |            |
| MBF241/26GE  | MBF241/26GEH  | 1/2     | 2.27       | 3.94 | 0.62       |
| MBF243/46GE  | MBF243/46GEH  | 3/4     | 2.64       | 4.54 | 0.82       |
| MBF2416GE    | MBF2416GEH    | 1       | 2.72       | 4.76 | 0.97       |
| MBF2411/46GE | MBF2411/46GEH | 1-1/4   | 3.22       | 5.59 | 1.93       |
| MBF2411/26GE | MBF2411/26GEH | 1-1/2   | 3.88       | 6.29 | 2.36       |
| MBF2426GE    | MBF2426GEH    | 2       | 4.72       | 8.26 | 3.70       |







# StainlessPress®

IsoTubi-USA, By Merit Brass Co.

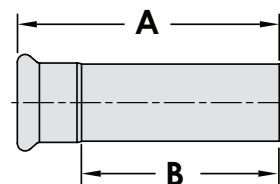
# MERIT BRASS

DIRECTING THE FLOW OF *Quality*

## Weld Adapter

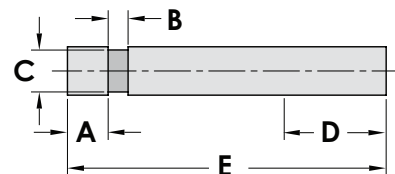
Male Weld x Female Press

| Part Number  |               | Size    | Dimensions |      | Weight<br>lbs |
|--------------|---------------|---------|------------|------|---------------|
|              |               | Inches  | Inches     |      |               |
| EPDM         | HNBR          | Nominal | A          | B    |               |
| MBF551/26GE  | MBF551/26GEH  | 1/2     | 5.13       | 4.30 | 0.62          |
| MBF553/46GE  | MBF553/46GEH  | 3/4     | 5.27       | 4.32 | 0.82          |
| MBF5516GE    | MBF5516GEH    | 1       | 5.34       | 4.31 | 0.97          |
| MBF5511/46GE | MBF5511/46GEH | 1-1/4   | 5.58       | 4.39 | 1.93          |
| MBF5511/26GE | MBF5511/26GEH | 1-1/2   | 5.52       | 4.32 | 2.36          |
| MBF5526GE    | MBF5526GEH    | 2       | 6.09       | 4.31 | 3.70          |



## Transition Adapter

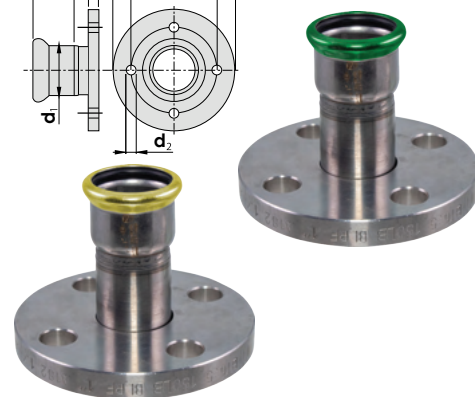
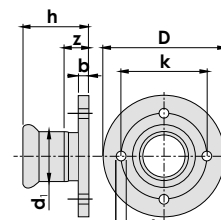
| Part Number  |               | Size    | Dimensions |       |       |      |      | Weight lbs |
|--------------|---------------|---------|------------|-------|-------|------|------|------------|
|              |               | Inches  | Inches     |       |       |      |      |            |
| EPDM         | HNBR          | Nominal | A          | B     | C     | D    | E    |            |
| MBF433/46GT  | MBF433/46GTH  | 3/4     | 0.625      | 0.280 | 0.938 | 1.57 | 4.94 | 0.25       |
| MBF4316GT    | MBF4316GTH    | 1       | 0.625      | 0.280 | 1.190 | 1.18 | 5.02 | 0.34       |
| MBF4311/46GE | MBF4311/46GEH | 1-1/4   | 0.625      | 0.280 | 1.540 | 1.57 | 5.12 | 0.67       |
| MBF4311/26GT | MBF4311/26GTH | 1-1/2   | 0.625      | 0.280 | 1.775 | 1.57 | 5.20 | 0.63       |
| MBF4326GT    | MBF4326GTH    | 2       | 0.625      | 0.340 | 2.250 | 2.36 | 5.77 | 1.13       |



## Van Stone Flange Adapter Press x ANSI 125/150 Flange

| Part Number  |               | Size    | Dimensions |      |      |                |                |      |    |      | Weight lbs |
|--------------|---------------|---------|------------|------|------|----------------|----------------|------|----|------|------------|
|              |               | Inches  | Inches     |      |      |                |                |      |    |      |            |
| EPDM         | HNBR          | Nominal | D          | k    | b    | d <sub>1</sub> | d <sub>2</sub> | h    | n* | z    |            |
| MBF441/26GE  | MBF441/26GEH  | 1/2     | 3.60       | 2.37 | 0.41 | 1.38           | 0.62           | 3.07 | 4  | 2.23 | 0.93       |
| MBF443/46GE  | MBF443/46GEH  | 3/4     | 3.86       | 2.75 | 0.48 | 1.69           | 0.62           | 3.19 | 4  | 2.24 | 1.39       |
| MBF4416GE    | MBF4416GEH    | 1       | 4.25       | 3.13 | 0.53 | 2.00           | 0.62           | 3.27 | 4  | 2.24 | 1.84       |
| MBF4411/46GE | MBF4411/46GEH | 1-1/4   | 4.69       | 3.50 | 0.59 | 2.50           | 0.62           | 3.54 | 4  | 2.36 | 2.40       |
| MBF4411/26GE | MBF4411/26GEH | 1-1/2   | 4.99       | 3.87 | 0.63 | 2.87           | 0.62           | 3.44 | 4  | 2.24 | 2.98       |
| MBF4426GE    | MBF4426GEH    | 2       | 6.02       | 4.75 | 0.76 | 3.63           | 0.75           | 4.53 | 4  | 2.76 | 4.79       |

n\* = number of such. Ø d<sub>2</sub> Flange material is AISI 304 and the body is AISI 316





# StainlessPress®

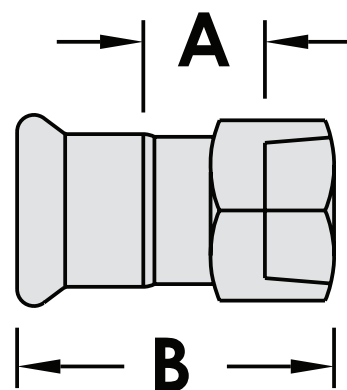
IsoTubi-USA, By Merit Brass Co.



## Female Adapter

Press x FPT

| Part Number      |                   | Size          | Dimensions |      | Weight lbs |
|------------------|-------------------|---------------|------------|------|------------|
|                  |                   | Inches        | Inches     |      |            |
| EPDM             | HNBR              | Nominal       | A          | B    |            |
| MBF171/21/26GE   | MBF171/21/26GEH   | 1/2 x 1/2     | 0.74       | 2.17 | 0.20       |
| MBF171/23/46GE   | MBF171/23/46GEH   | 1/2 x 3/4     | 0.92       | 2.44 | 0.28       |
| MBF171/216GE     | MBF171/216GEH     | 1/2 x 1       | 0.89       | 2.56 | 0.43       |
| MBF173/41/26GE   | MBF173/41/26GEH   | 3/4 x 1/2     | 0.84       | 2.47 | 0.32       |
| MBF173/43/46GE   | MBF173/43/46GEH   | 3/4 x 3/4     | 0.84       | 2.45 | 0.28       |
| MBF173/416GE     | MBF173/416GEH     | 3/4 x 1       | 0.80       | 2.59 | 0.43       |
| MBF173/411/46GE  | MBF173/411/46GEH  | 3/4 x 1-1/4   | 1.08       | 3.03 | 0.72       |
| MBF1711/26GE     | MBF1711/26GEH     | 1 x 1/2       | 0.86       | 2.56 | 0.50       |
| MBF1713/46GE     | MBF1713/46GEH     | 1 x 3/4       | 0.86       | 2.56 | 0.43       |
| MBF17116GE       | MBF17116GEH       | 1 x 1         | 0.78       | 2.56 | 0.43       |
| MBF17111/46GE    | MBF17111/46GEH    | 1 x 1-1/4     | 1.10       | 2.97 | 0.69       |
| MBF17111/26GE    | MBF17111/26GEH    | 1 x 1-1/2     | 1.05       | 3.13 | 0.80       |
| MBF1711/41/26GE  | MBF1711/41/26GEH  | 1-1/4 x 1/2   | 0.93       | 2.80 | 0.81       |
| MBF1711/416GE    | MBF1711/416GEH    | 1-1/4 x 1     | 0.86       | 2.80 | 0.63       |
| MBF1711/411/46GE | MBF1711/411/46GEH | 1-1/4 x 1-1/4 | 0.93       | 2.95 | 0.74       |
| MBF1711/411/26GE | MBF1711/411/26GEH | 1-1/4 x 1-1/2 | 0.88       | 3.11 | 0.69       |
| MBF1711/216GE    | MBF1711/216GEH    | 1-1/2 x1      | 1.01       | 3.06 | 1.26       |
| MBF1711/211/46GE | MBF1711/211/46GEH | 1-1/2 x 1-1/4 | 0.66       | 2.70 | 0.63       |
| MBF1711/211/26GE | MBF1711/211/26GEH | 1-1/2 x 1-1/2 | 0.80       | 3.05 | 0.64       |
| MBF1711/226GE    | MBF1711/226GEH    | 1-1/2 x 2     | 1.39       | 3.65 | 1.21       |
| MBF17211/46GE    | MBF17211/46GEH    | 2 x 1-1/4     | 0.77       | 3.39 | 1.48       |
| MBF17211/26GE    | MBF17211/26GEH    | 2 x 1-1/2     | 1.29       | 3.90 | 1.83       |
| MBF17226GE       | MBF17226GEH       | 2 x 2         | 1.24       | 3.94 | 1.04       |





# StainlessPress®

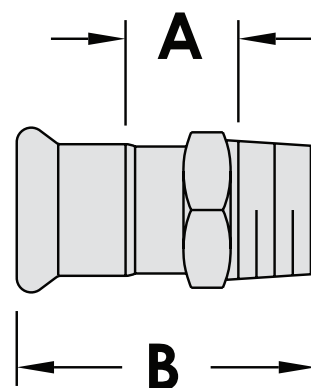
IsoTubi-USA, By Merit Brass Co.



## Male Adapter

Press x MPT

| Part Number      |                   | Size          | Dimensions |      | Weight lbs |
|------------------|-------------------|---------------|------------|------|------------|
|                  |                   | Inches        | Inches     |      |            |
| EPDM             | HNBR              | Nominal       | A          | B    |            |
| MBF181/21/26GE   | MBF181/21/26GEH   | 1/2 x 1/2     | 0.78       | 2.21 | 0.15       |
| MBF181/23/46GE   | MBF181/23/46GEH   | 1/2 x 3/4     | 0.80       | 2.30 | 0.20       |
| MBF181/216GE     | MBF181/216GEH     | 1/2 x 1       | 0.81       | 2.44 | 0.34       |
| MBF183/41/26GE   | MBF183/41/26GEH   | 3/4 x 1/2     | 0.81       | 2.35 | 0.22       |
| MBF183/43/46GE   | MBF183/43/46GEH   | 3/4 x 3/4     | 0.83       | 2.43 | 0.22       |
| MBF183/416GE     | MBF183/416GEH     | 3/4 x 1       | 0.83       | 2.56 | 0.29       |
| MBF183/411/46GE  | MBF183/411/46GEH  | 3/4 x 1-1/4   | 0.91       | 2.66 | 0.52       |
| MBF1813/46GE     | MBF1813/46GEH     | 1 x 3/4       | 0.83       | 2.52 | 0.28       |
| MBF18116GE       | MBF18116GEH       | 1 x 1         | 0.83       | 2.64 | 0.32       |
| MBF18111/46GE    | MBF18111/46GEH    | 1 x 1-1/4     | 0.91       | 2.74 | 0.52       |
| MBF18111/26GE    | MBF18111/26GEH    | 1 x 1-1/2     | 0.91       | 2.74 | 0.58       |
| MBF1811/416GE    | MBF1811/416GEH    | 1-1/4 x 1     | 0.98       | 2.97 | 0.47       |
| MBF1811/411/46GE | MBF1811/411/46GEH | 1-1/4 x 1-1/4 | 0.98       | 2.97 | 0.57       |
| MBF1811/411/26GE | MBF1811/411/26GEH | 1-1/4 x 1-1/2 | 0.98       | 2.95 | 0.62       |
| MBF1811/23/46GE  | MBF1811/23/46GEH  | 1-1/2 x 3/4   | 0.91       | 2.78 | 0.55       |
| MBF1811/216GE    | MBF1811/216GEH    | 1-1/2 x 1     | 0.91       | 2.90 | 0.62       |
| MBF1811/211/46GE | MBF1811/211/46GEH | 1-1/2 x 1-1/4 | 0.91       | 2.92 | 0.55       |
| MBF1811/211/26GE | MBF1811/211/26GEH | 1-1/2 x 1-1/2 | 0.91       | 2.92 | 0.64       |
| MBF18211/26GE    | MBF18211/26GEH    | 2 x 1-1/2     | 0.90       | 3.48 | 0.94       |
| MBF18226GE       | MBF18226GEH       | 2 x 2         | 0.98       | 3.82 | 1.04       |





# StainlessPress®

IsoTubi-USA, By Merit Brass Co.

# MERIT BRASS

DIRECTING THE FLOW OF *Quality*

## Three Piece Ball Valve

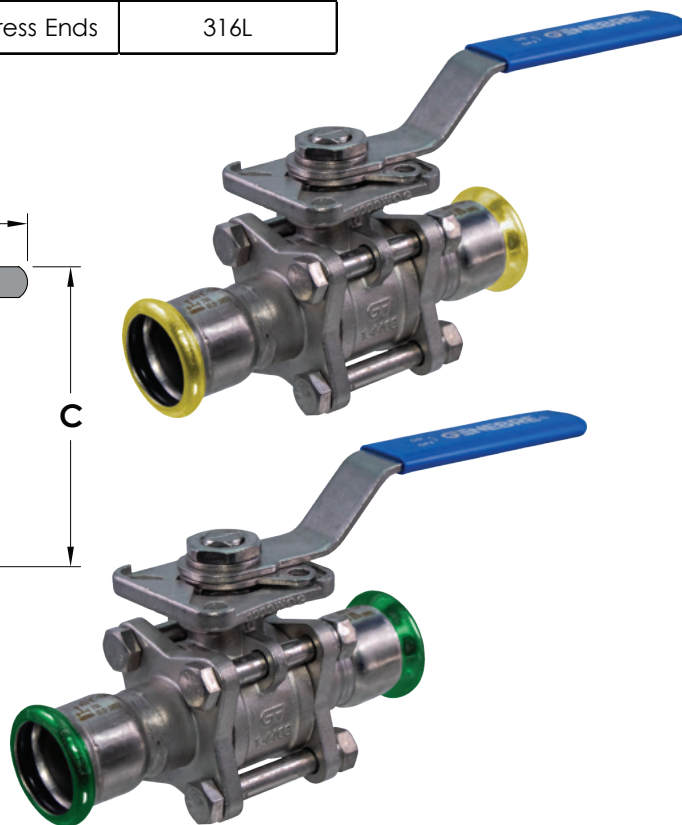
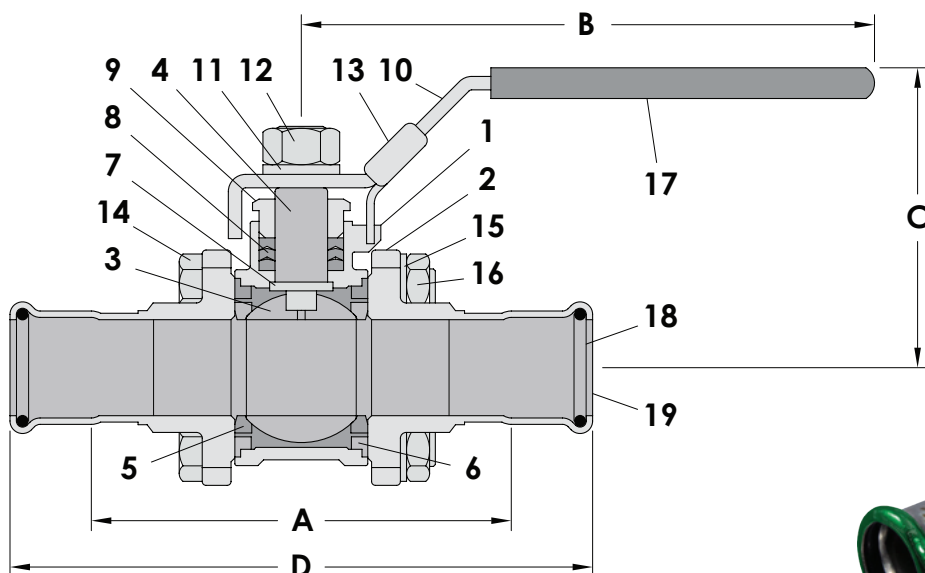
Press x Press

| Part Number  |               | Size<br>Inches | Dimensions<br>Inches |      |      |      | Weight lbs |
|--------------|---------------|----------------|----------------------|------|------|------|------------|
| EPDM         | HNBR          | Nominal        | A                    | B    | C    | D    |            |
| MBF311/26GE  | MBF311/26GEH  | 1/2            | 2.82                 | 4.26 | 2.44 | 4.49 | 1.24       |
| MBF313/46GE  | MBF313/46GEH  | 3/4            | 3.50                 | 5.31 | 2.68 | 5.39 | 1.73       |
| MBF3116GE    | MBF3116GEH    | 1              | 3.86                 | 5.30 | 2.75 | 5.90 | 2.46       |
| MBF3111/46GE | MBF3111/46GEH | 1-1/4          | 4.17                 | 6.30 | 3.35 | 6.53 | 5.90       |
| MBF3111/26GE | MBF3111/26GEH | 1-1/2          | 4.72                 | 7.87 | 3.54 | 7.13 | 5.93       |
| MBF3126GE    | MBF3126GEH    | 2              | 5.35                 | 8.27 | 3.94 | 8.89 | 8.48       |

| NO. | PART NAME     | MATERIAL      |
|-----|---------------|---------------|
| 1   | Body          | ASTM A351-C8M |
| 2   | Cap           | ASTM A351-C8M |
| 3   | Ball          | ASTM A351-C8M |
| 4   | Stem          | ASTM A276-316 |
| 5   | Ball Seat     | PTFE/RTFE     |
| 6   | Body Seal     | PTFE/RTFE     |
| 7   | Thrust Washer | PTFE/RTFE     |
| 8   | Packing       | PTFE/RTFE     |
| 9   | Gland Nut     | AISI 304      |
| 10  | Handle        | AISI 304      |

| NO. | PART NAME     | MATERIAL                       |
|-----|---------------|--------------------------------|
| 11  | Spring Washer | AISI 304                       |
| 12  | Nut           | AISI 304                       |
| 13  | Latch Lock    | AISI 304                       |
| 14  | Bolt          | AISI 304                       |
| 15  | Spring Washer | AISI 304                       |
| 16  | Nut           | AISI 304                       |
| 17  | Handle Sleeve | PVC                            |
| 18  | O-Ring        | EPDM, Nitrile, Fluoroelastomer |
| 19  | G-Press Ends  | 316L                           |

**Operating Pressure: 300 PSI (20.7 bar)**







IsoTubi-USA, By Merit Brass Co.



## This image shows a full page of blank, lined paper. It features approximately 20 evenly spaced horizontal black lines running across the width of the page, typical of notebook or legal stationery. The margins are consistent on all sides, and there is no handwriting or other markings present.

# Contact Us

## Cleveland Headquarters

One Merit Drive/PO Box 43127  
Cleveland, OH 44143

## Dallas Distribution Center

10614 King William Drive  
Dallas, TX 75220

## Birmingham Distribution Center

220 Oxmoor Court  
Birmingham, AL 35209

## Sparks Distribution Center

200 Vista Boulevard Suite #106  
Sparks, NV 89434

---

# 800.726.9800

---

[contactus@meritbrass.com](mailto:contactus@meritbrass.com)



[www.meritbrass.com](http://www.meritbrass.com)

[www.mbwebxpress.com](http://www.mbwebxpress.com)



DIRECTING THE FLOW OF *Quality*

Find us in

**MasterSpec®**

Powered by Deltek Specpoint®

LEARN MORE



Revised January 2023

©2023 Merit Brass Company. All Rights Reserved.