



SERVICE PARTS LIST

BULLETIN NO.**54-44-0010**

SPECIFY CATALOG NO. AND SERIAL NO. WHEN ORDERING PARTS		REVISED BULLETIN	DATE
M12™ PRUNING SHEAR			Dec. 2022
CATALOG NO.	2534-20	STARTING SERIAL NO.	N19A
		WIRING INSTRUCTION	
		SEE PAGE 2	

EXAMPLE:
Component Parts (Small #) Are Included
When Ordering The Assembly (Large #).

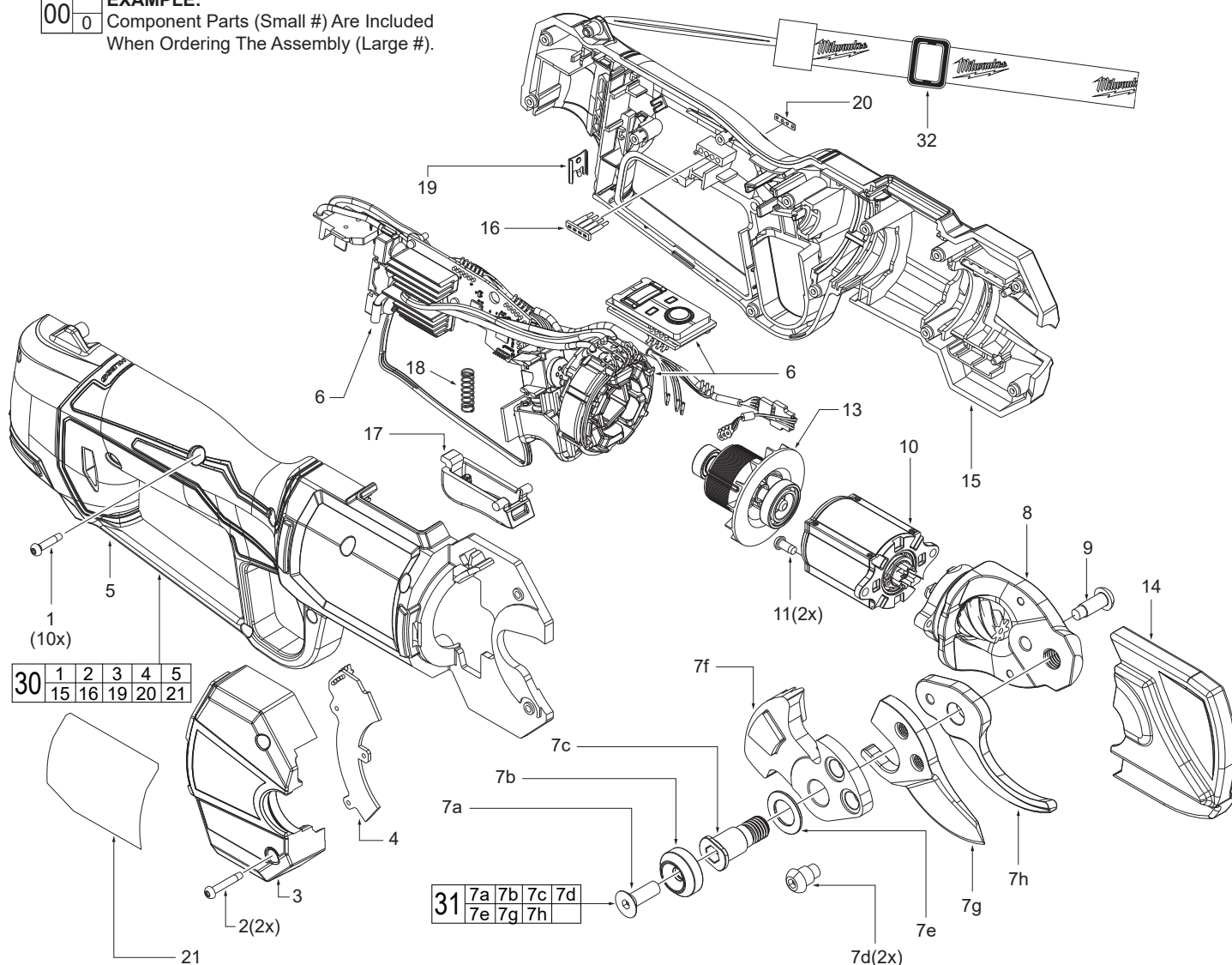


FIG.	PART NO.	DESCRIPTION OF PART	NO. REQ.
1	-----	M3 x 14mm T10 Screw	10
2	-----	M3 x 18mm T10 Screw	2
3	-----	Handle Sensor Cover	1
4	-----	Sensor Board	1
5	-----	Handle Cover	1
6	14-20-2534	PCBA & Motor Stator Service Assembly	1
7a	-----	Machine Screw	1
7b	42-52-0009	Locking Cap	1
7c	06-65-0006	Blade Mounting Pin	1
7d	-----	Blade Mounting Screw	2
7e	45-88-0123	Blade Pin Washer	1
7f	32-05-0112	Bevel Gear	1
7g	-----	Cutting Blade	1
7h	42-26-0139	Support Blade	1
8	14-46-0546	Frame Service Assembly	1
9	06-82-0310	Frame Hex Screw	1
10	14-29-0069	Gearbox Service Assembly	1
11	06-82-2660	M3.5 x 8mm TapTite Screw	2
13	14-50-0056	Motor Rotor & Pinion Service Assembly	1
14	31-15-2534	Blade Cover	1
15	-----	Handle Support	1
16	31-01-0201	Light Pipe	1
17	31-92-0005	Finger Lock	1

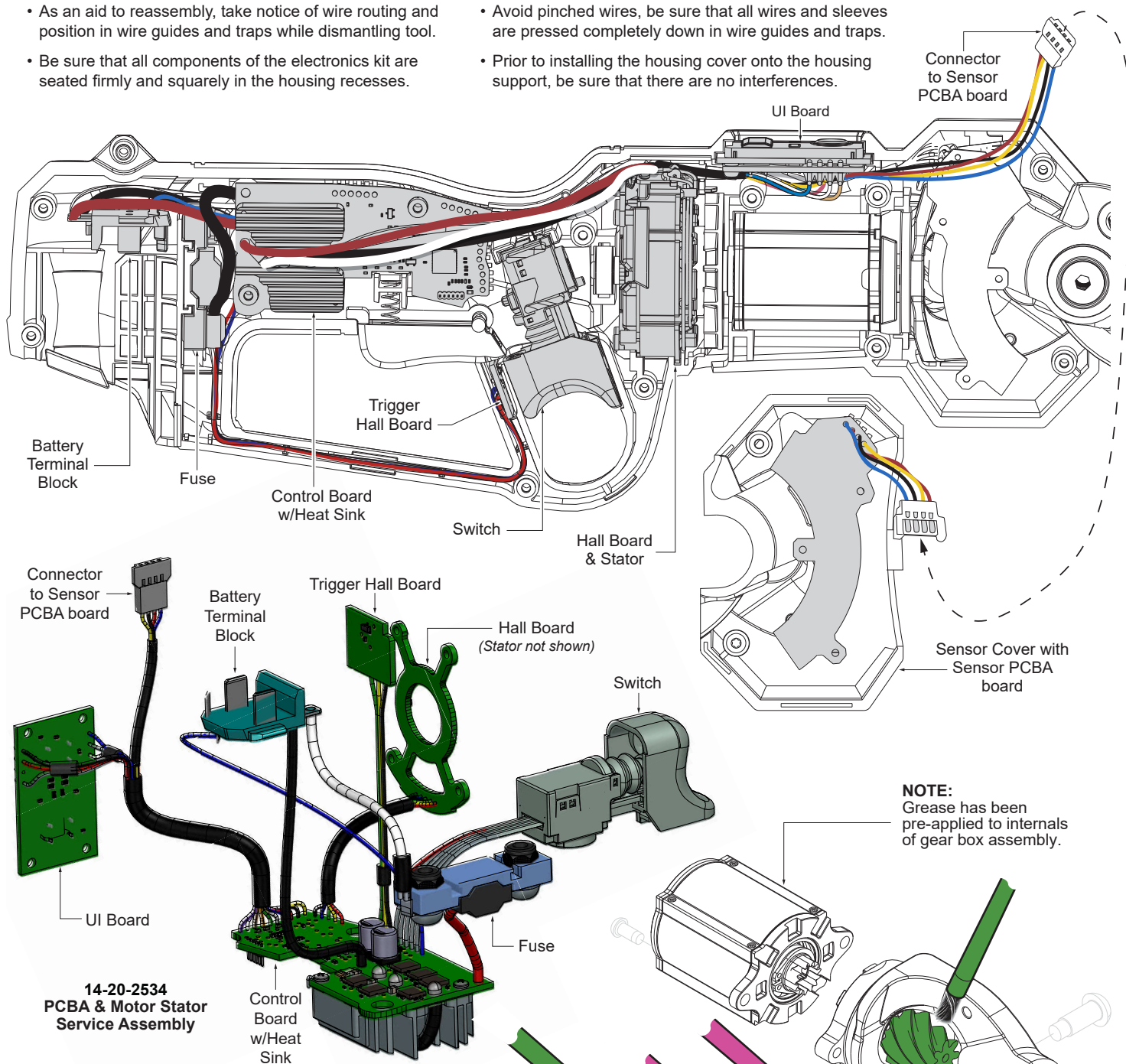
FIG.	PART NO.	DESCRIPTION OF PART	NO. REQ.
18	40-50-0417	Lockoff Trigger Spring	1
19	42-70-0058	Housing Connection Clip	1
20	10-20-4479	Gauge Label	1
21	12-20-2534	Service Nameplate	1
30	14-38-0039	Housing Service Kit	1
31	42-26-0017	Blade Service Kit	1
32	45-56-2534	Wrist Strap	1

SCREW TORQUE SPECIFICATIONS				
FIG.	PART NO.	WHERE USED	SEAT TORQUE	
			(kgf-cm)	(in-lb)
1	-----	Handle Cover	10±1	8.7±1
2	-----	Sensor Cover	10±1	8.7±1
7a	-----	Locking Cap	55±2	47.7±1
7c	06-65-0006	Blade Kit	200±4	173.5±2
7d	-----	Blade Kit	120±2	104.2±1
9	06-82-0310	Frame Assembly	80±2	69.4±1
11	06-82-2660	Gearbox Assembly	16±2	13.9±1

SERVICE WIRING DIAGRAM

- As an aid to reassembly, take notice of wire routing and position in wire guides and traps while dismantling tool.
- Be sure that all components of the electronics kit are seated firmly and squarely in the housing recesses.

- Avoid pinched wires, be sure that all wires and sleeves are pressed completely down in wire guides and traps.
- Prior to installing the housing cover onto the housing support, be sure that there are no interferences.



LUBRICATION INSTRUCTIONS

- 1 lb. Type "J" Grease, No. 49-08-4220
- Renolin DO 22 HV Oil, No. 49-32-2534

NOTE:

Regarding parts to receive oil:
Place one to two drops of the recommended oil (or the equivalent) to the parts shown after assembly.

NOTE:

Regarding parts to be lubricated:
Apply a light coating of grease to all highlighted parts shown prior to installation. Reference the key above for grease types.

NOTE:

Add oil between support/cutting blades #7g & #7h, locking cap #7b, washer #7e and bevel gear #7f after assembly.