

# FLEXSTORM® CATCH-IT® REUSABLE INLET PROTECTION

## SPECIFY WITH CONFIDENCE

State DOTs and Municipalities across the country now have a universal structural BMP to address the issue of storm sewer inlet protection: FLEXSTORM CATCH-IT Inlet Filters — the temporary *and* reusable solution.

The FLEXSTORM CATCH-IT system complies with ASTM D8057 Standard Specification for Inlet Filters with a Rigid Frame. FLEXSTORM CATCH-IT is the preferred choice for temporary inlet protection and storm water runoff control. CATCH-IT frames are configured to fit any drainage structure and are equipped with high-efficiency filter bags. Whether you are the specifier or the user, it's clear to see how FLEXSTORM CATCH-IT Inlet Filters outperform the competition.

## APPLICATIONS:

DOT	Road Construction
Commercial	Parking Lots
Industrial	Maintenance
Residential Developments	

## FEATURES:

- **Configurable:** steel frames configured and guaranteed to fit ANY storm drainage structure
- **Adjustable:** although shipped to fit your inlet, rectangular framing may be field adjusted in 1/2" increments if necessary
- **Reusable:** galvanized framing will last year after year in harsh conditions, while geotextile filter bags are easily replaced after several years of use
- **Effective:** works below grade; overflow feature allows streets to drain with full bag; third party testing results of the FX filter bag show 82%
- **Affordable:** low per-unit cost; installs in seconds; easily maintained with Universal Removal Tool (no machinery required)



**ADS Service:**  
ADS representatives are committed to providing you with the answers to all your questions, including selecting the proper filter, specifications, installation and more. Also try the **ADS FLEXSTORM Online Product Configurator** at [www.inletfilters.com](http://www.inletfilters.com)



## BENEFITS:

- Reduce jobsite flooding and keep projects running
- Minimize residential complaints with cleaner, dryer streets during all construction phases
- Prevent hazardous road icing conditions by eliminating ponding at curb inlets
- Significantly reduce cleanup costs
- Prevent siltation and pollution of rivers, lakes, and ponds
- Helps prevent fines; NPDES PHASE II Compliant
- Lowest cost alternative for the highest level of Inlet Protection
- Available through 5,000 ADS distributors nationwide
- Ships within 48 hours



## FLEXSTORM CATCH-IT INLET FILTERS SPECIFICATION

### IDENTIFICATION

The installer shall inspect the plans and/or worksite to determine the quantity of each drainage structure casting type. The foundry casting number, exact grate size and clear opening size, or other information will be necessary to finalize the FLEXSTORM part number and dimensions. The units are shipped to the field configured precisely to fit the identified drainage structure.

### MATERIAL AND PERFORMANCE

The FLEXSTORM Inlet Filter system is comprised of a corrosion resistant steel frame and a replaceable geotextile filter bag attached to the frame with a stainless steel locking band. The filter bag hangs suspended at a distance below the grate that shall allow full water flow into the drainage structure if the bag is completely filled with sediment. The standard Woven Polypropylene FX filter bags are rated for 200 gpm/sqft with a removal efficiency of 82% when filtering a USDA Sandy Loam sediment load. CATCH-IT Inlet Filters are certified to meet the new ASTM D8057 Standard Specification for Inlet Filters with a Rigid Frame.

### INSTALLATION

Remove the grate from the casting or concrete drainage structure. Clean the ledge (lip) of the casting frame or drainage structure to ensure it is free of stone and dirt. Drop in the FLEXSTORM Inlet Filter through the clear opening and be sure the suspension hangers rest firmly on the inside ledge (lip) of the casting. Replace the grate and confirm it is elevated no more than 1/8", which is the thickness of the steel hangers. For wall mount units, follow instructions for attaching the stainless steel mounting brackets using the provided concrete fasteners.

### INSPECTION FREQUENCY

Construction site inspection should occur following each 1/2" or more rain event. Post Construction inspections should occur three times per year (every four months) in areas with mild year round rainfall and four times per year (every three months Feb–Nov) in areas with summer rains before and after the winter snowfall season. Industrial application site inspections (loading ramps, wash racks, maintenance facilities) should occur on a regularly scheduled basis no less than three times per year.

### MAINTENANCE GUIDELINES

Empty the filter bag if more than half filled with sediment and debris, or as directed by the Engineer. Remove the grate, engage the lifting bars or handles with the FLEXSTORM Removal Tool, and lift from the drainage structure. Dispose of the sediment or debris as directed by the Engineer or Maintenance Contract in accordance with EPA guidelines.

As an alternative, an industrial vacuum may be used to collect the accumulated sediment. Remove any caked on silt from the sediment bag and reverse flush the bag with medium spray for optimal filtration. Replace the bag if torn or punctured to 1/2" diameter or greater on the lower half of the bag.

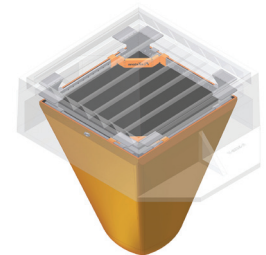
### FILTER BAG REPLACEMENT

Remove the bag by loosening or cutting off the clamping band. Take the new filter bag, which is equipped with a stainless steel worm drive clamping band, and use a screw driver to tighten the bag around the frame channel. Ensure the bag is secure and that there is no slack around the perimeter of the band.

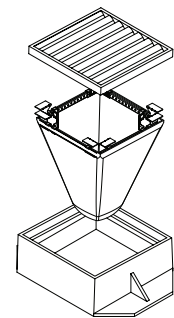


Replaceable Sediment Bag

1/8" thick steel hangers & channels; precision stampings **configured to fit each individual casting**



CAD drawings, work instructions and test reports on website: [www.inletfilters.com](http://www.inletfilters.com)



For more information on FLEXSTORM Inlet Filters and other ADS products, please contact our Customer Service Representatives at 1-800-821-6710  
Try the **ADS FLEXSTORM Online Product Configurator** at [www.inletfilters.com](http://www.inletfilters.com).

ADS "Terms and Conditions of Sale" are available on the ADS website, [www.ads-pipe.com](http://www.ads-pipe.com)  
The ADS logo and the Green Stripe are registered trademarks of Advanced Drainage Systems, Inc.  
FLEXSTORM is a registered trademark of Inlet & Pipe Protection, Inc.  
© 2018 Advanced Drainage Systems, Inc. BRO 10891 10/18