

# One Choice. Greater Impact.

---



## **M-SERIES™ - Optimized for Multifamily**

Integrated heating and cooling systems in a tiny 3' x 3' footprint.



Design Your Vision



All-In-One HVAC Products



Faster Installation



Simplified Maintenance

# MagicPak®

Makes every job easier.

## MagicPak M-Series™

MagicPak M-Series heating and cooling units are the ideal choice for apartments, condominiums and other multifamily buildings. Easy to install and maintain, these self-contained units optimize the space needed for heating and cooling, while minimizing building penetration. Customizable exterior louvers further extend creative possibilities, without compromising the building's form, space or ambiance. Altogether, the M-Series offers an impressive efficiency rating and a wide range of configurations to meet specific needs.



### Efficiency rating up to 14.0 SEER and 11.0 EER

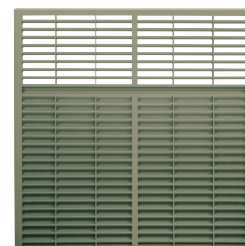
- Every M-Series unit provides dependable comfort and consistent energy savings.

### Product offerings from 3/4 to 3-ton, and gas heating ranges of 15 - 60k Btu/hr

- With multiple capacities available, the M-Series offers a solution to fit a variety of applications.

### Choose the model that best fits your application

- Gas heating/electric cooling packaged units
- Electric heating/electric cooling packaged units and Electric heat pump packaged units



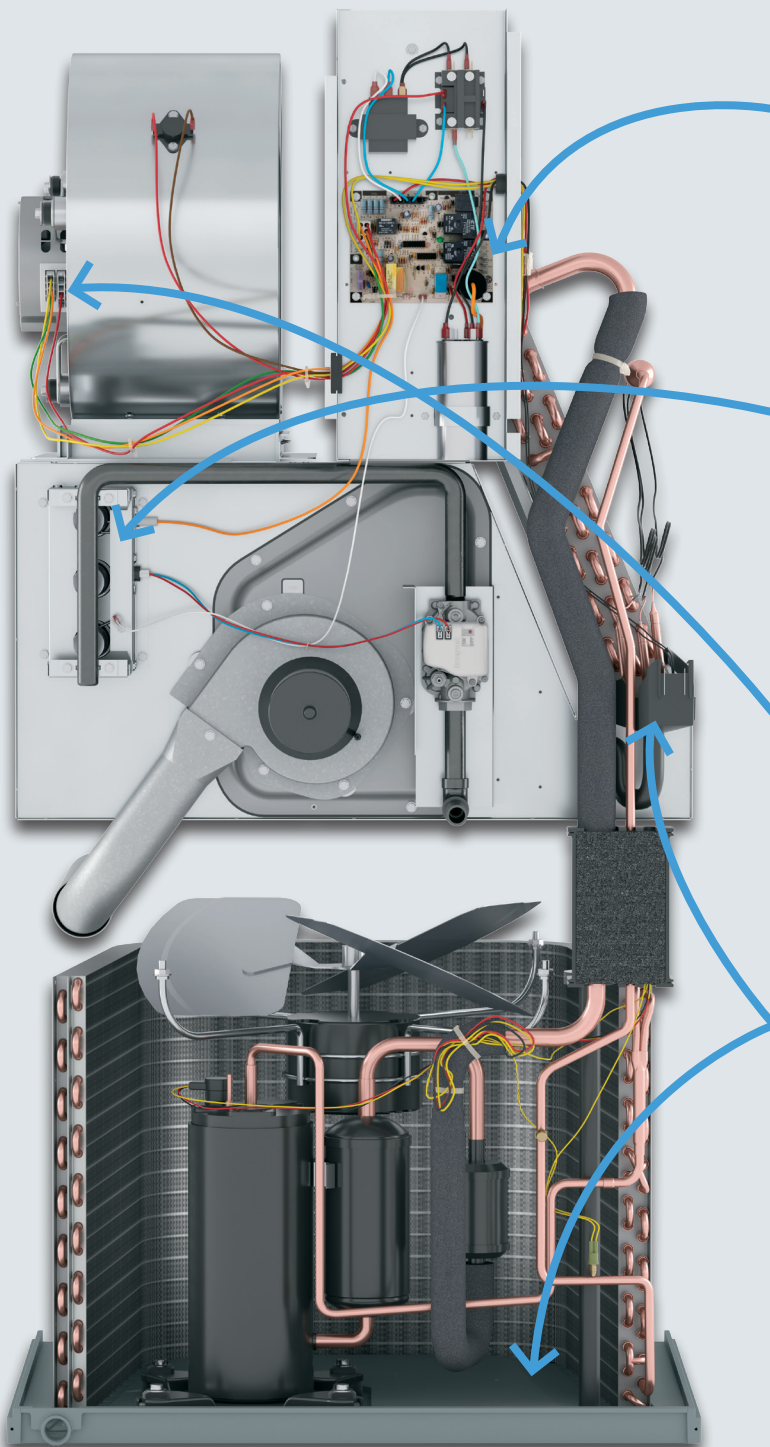
**Customizable exterior louvers** offer a wide range of creative possibilities without compromising the building's façade.



# MagicPak All-In-One™ HVAC Systems

## M-Series™

Each self-contained MagicPak M-Series unit is comprised of quality components.



**Forward facing components**  
for ease of maintenance.

**Stainless-steel heat exchanger**  
is a standard feature, and the unit's fully insulated cabinet ensures quiet operation.

**ECM constant torque blower motor**  
provides low maintenance, maximum efficiency and wide airflow range.

**Built-in polypropylene drain pans**  
deliver antimicrobial protection and are sloped to aid in rainwater drainage.



# MagicPak® M-Series™

## Installation, Maintenance & Specifications

**Factory-installed features simplify every step, while also saving time and money.**



### Top supply and return on all models

- Since the supply and return are conveniently located at the top of every unit, the M-Series makes it easy to install and connect the duct.

### Toolless filter access

- Maintaining the unit is fast and convenient, with no additional equipment required.

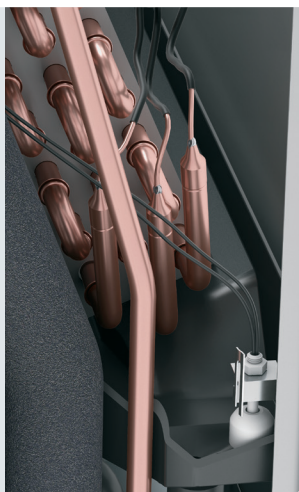


# MagicPak® M-Series™

## Simplifying Specifications

### Factory-installed evaporator float switch

- Every drain pan features a water level detection device that protects water from overflowing if clogging occurs. This meets many building codes for overflow protection.



### Factory-installed ventilation air on MHP and MCE

- All models are equipped with a fresh air capability, eliminating the need for additional building penetrations or third-party fresh air solutions.\*



### <1.4% cabinet air leakage on select models

- A unique cabinet design improves efficiency by reducing air leakage.



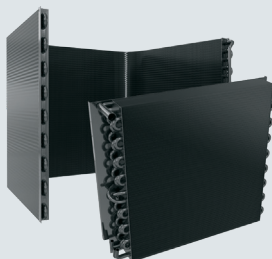
### Optional impact-resistant louvers

- Impact-resistant louvers are designed to protect a building's equipment and occupants during severe weather. The louvers are exclusively designed for MagicPak and will not hinder product performance.



### Optional epoxy-coated coils

- This is an electrodeposited epoxy coating system designed specifically for corrosive environments. Applied as an exclusive MagicPak dual-coil protective covering, the epoxy-coated coils provide up to 6,900 hours of Sea Water Acetic Acid Test (SWAAT) corrosion resistance, without the risk of performance degradation.



\* Up to 15% of CFM in ventilation air.



# Inside MagicPak®

## M-Series™

### MagicPak is a name you can rely on for years to come.

With MagicPak's 55+ years of experience manufacturing innovative heating and cooling solutions, peace of mind is just part of the package. That's because you also get some of the best warranties in the industry, no registration required, and all new products are eligible.

- 5-year limited warranty on all parts
- 20-year warranty on stainless-steel heat exchanger
- Proudly assembled in the U.S. since 1964

#### ELECTRIC/ELECTRIC | MCE MODEL

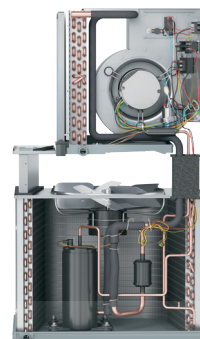
- Electric heating range of 3 - 10KW
- Cooling range of 8,600 - 34,800 BTU/HR

#### GAS/ELECTRIC | MGE MODEL

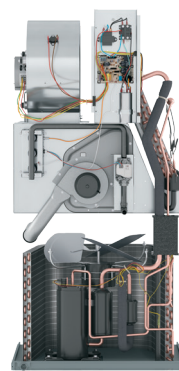
- Gas heating efficiency of 80% AFUE
- Gas heating range of 15,000 - 60,000 BTU/HR
- Cooling range of 8,600 - 34,200 BTU/HR

#### ELECTRIC HEAT PUMP | MHP MODEL

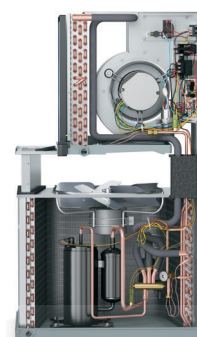
- Up to 8 HSPF; Electric heating range of 3 - 10KW
- Cooling range of 8,600 - 34,600 BTU/HR
- Heating range of 5,200 - 32,400 BTU/HR



MCE MODEL



MGE MODEL



MHP MODEL

