



AquaSense®

Z6913-XL and Z6915-XL Series

Sensor-Operated Lavatory Faucets for Battery or Plug-In Installations.

Installation, Operation, Maintenance and Parts Manual

Patented and Patents Pending



Z6913-XL

Shown with -CP4 option



Z6915-XL

⚠ **WARNING:** Cancer and Reproductive Harm - www.P65Warnings.ca.gov

⚠ **ADVERTENCIA:** Cáncer y daño reproductivo - www.P65Warnings.ca.gov

⚠ **AVERTISSEMENT:** Cancer et effets néfastes sur la reproduction - www.P65Warnings.ca.gov

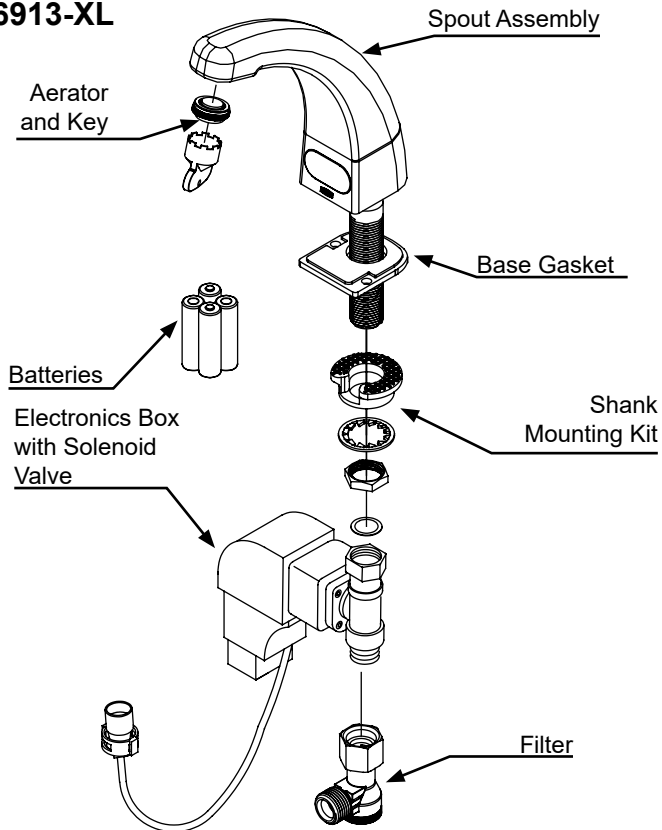
LIMITED WARRANTY

All goods sold hereunder are warranted to be free from defects in material and factory workmanship for a period of three years from the date of purchase. Decorative finishes warranted for one year. We will replace at no costs goods that prove defective provided we are notified in writing of such defect and the goods are returned to us prepaid at Sanford, NC, with evidence that they have been properly maintained and used in accordance with instructions. We shall not be responsible for any labor charges or any loss, injury or damages whatsoever, including incidental or consequential damages. The sole and exclusive remedy shall be limited to the replacement of the defective goods. Before installation and use, the purchaser shall determine the suitability of the product for his intended use and the purchaser assumes all risk and liability whatever in connection therewith. Where permitted by law, the implied warranty of merchantability is expressly excluded. If the products sold hereunder are "consumer products," the implied warranty of merchantability is limited to a period of three years and shall be limited solely to the replacement of the defective goods. All weights stated in our catalogs and lists are approximate and are not guaranteed.

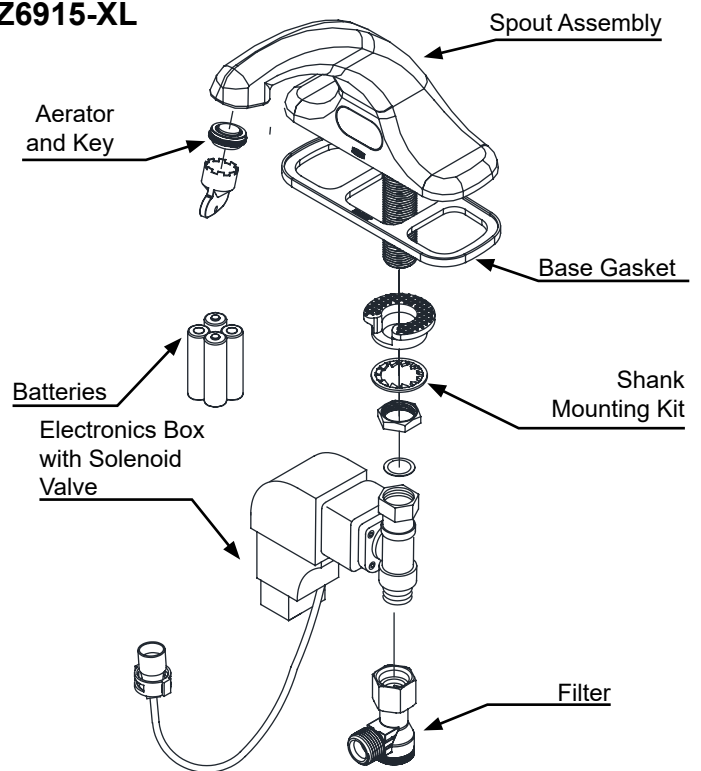
This Page Intentionally Left Blank

Aqua Sense® Faucets Package Contents

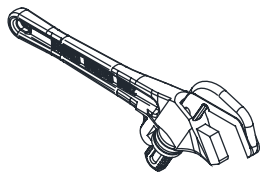
Z6913-XL



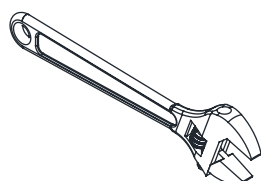
Z6915-XL



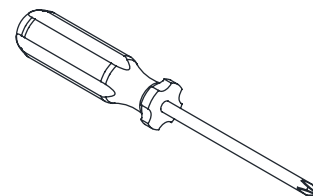
Required Tools



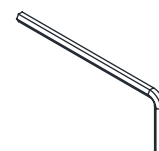
Smooth Jawed
Wrench



Adjustable Wrench
(Optional)



Phillips Head
Screwdriver



3/32", M3
Allen Wrenches

Overview:

Zurn® Aqua-Sense® Faucets features multiple spout designs in a standard polished chrome finish with one piece heavy duty cast brass spouts and advanced electronic components and feature sets. Sophisticated automatic user detection and self-calibration ensures the user does not need to touch the faucet and helps deliver optimum water savings.

Specifications:

Voltage:	6 VDC Series [4 "AA" (Alkaline or Lithium) and/or external power option]
Sensor Range:	Self-calibrated, dependent upon sink depth and finish.
Operating Water Pressure:	20-80 psi
Ambient Temperature:	32°F to 122°F (0°C to 50°C)
Operational Water Temperature:	35°F to 140°F (2°C to 60°C)
Aerator:	0.5 GPM Vandal-Resistant (Standard)


Important Safety Information:

- Installer is responsible for ensuring the product is installed and conforms to all plumbing codes and ordinances.
- Do not convert or modify this Zurn product yourself. All warranties will be voided.
- Water supply lines must be sized according to building designer in order to provide adequate water supply for each fixture.
- Flush all water lines prior to making connections.

Prior to Installation:

Before installing your Zurn® Aqua-Sense® Faucet: the items listed below should already be installed on site.

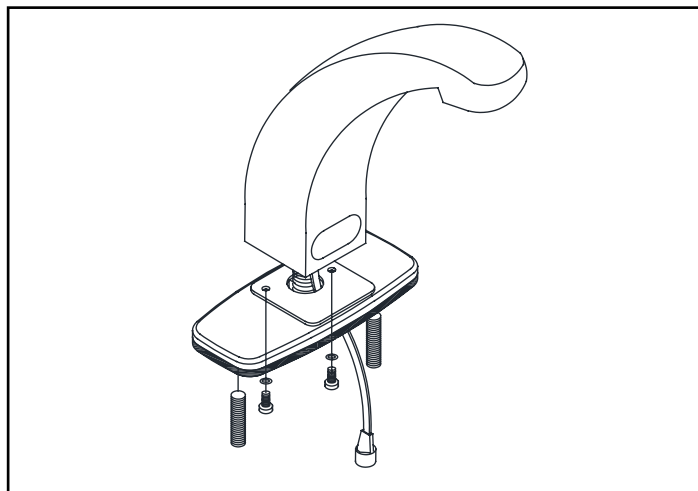
- Lavatory/sink
- Drain Line
- Hot and cold water supply line or pre-tempered water supply line.
- Installer/Service should not use pipe dope or teflon/thread sealant anywhere on this product, most notably threads and connection points.
- Care shall be taken when installing this product to prevent marring of any exposed or decorative surfaces.

 **Be sure the sink/lavatory/basin is clear from any objects upon making the sensor to electronics connection initiating the self-calibration feature. The sink must be clear of any and all objects in order to calibrate appropriately (calibration time approx 30-60sec).**

Cover Plate Installation Instructions

1. (For faucets with -CP4 or -CP8 suffix).

Remove adhesive backing from gasket and then pass sensor connector wire and shank through gasket. Align gasket with faucet bottom and press firmly together. Pass sensor connector and shank through cover plate and fasten to the faucet with the provided screws.



Spout Installation Instructions

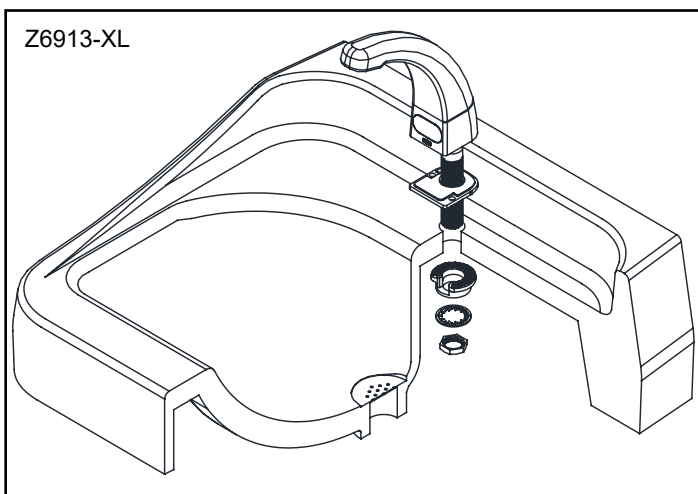
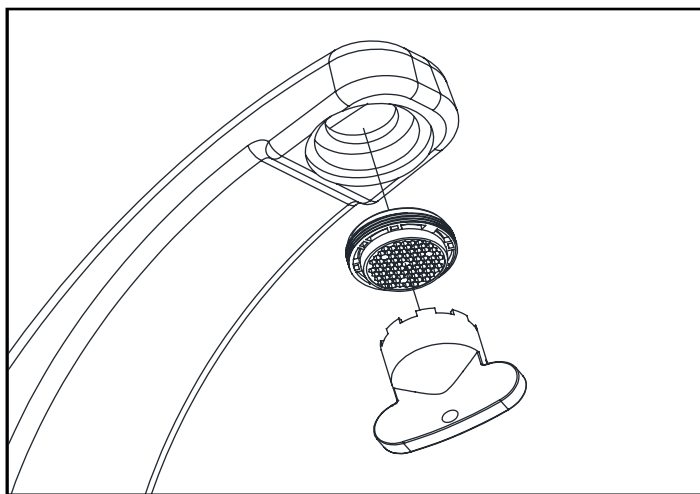
NOTE: Before installation, turn off water supplies to existing faucet and remove faucet if replacing an existing device. Clean the faucet basin and clear away debris. Flush all supply lines before connecting the faucet. Failure to do so may result in debris clogging the inlets and/or internal control and mixing valve

1. Carefully screw aerator into spout using included tool.

⚠ Take care to not pinch blue o-ring

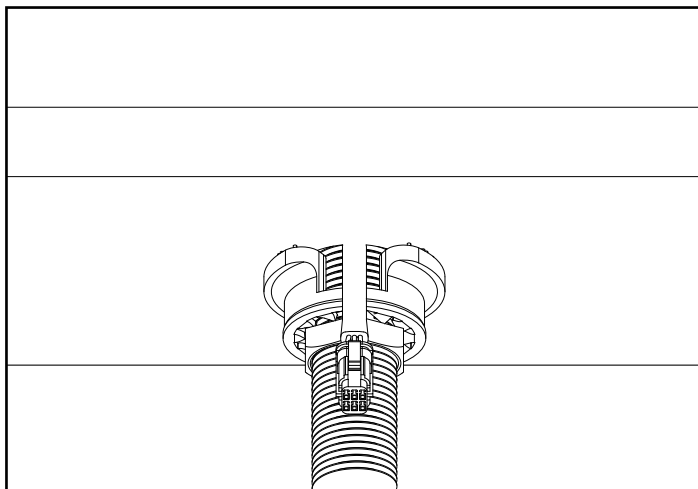
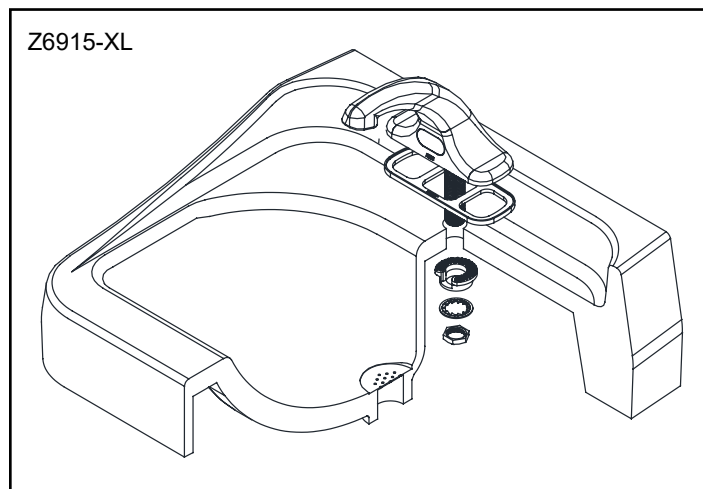
2. Install spout to sink using spout base gasket, plastic mounting washer, star washer and mounting nut.

Note: Faucet location needs to be within 3 feet radius above electrical outlet for ACA configurations.



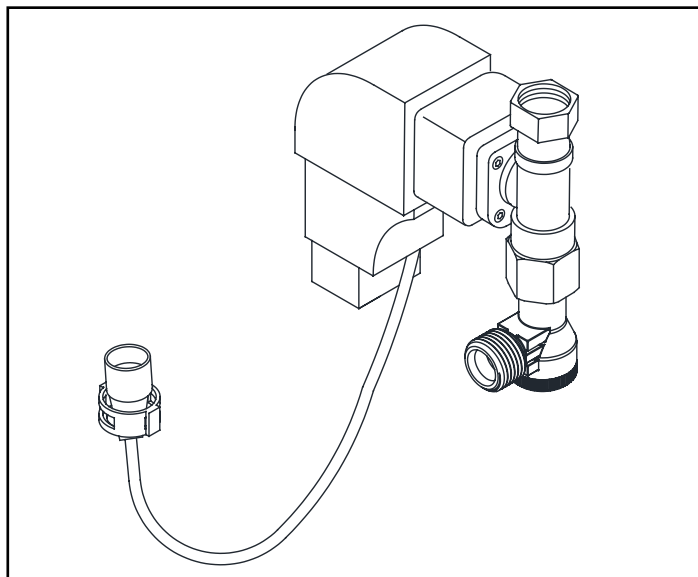
3. Ensure that slot in plastic washer is facing forward.

⚠ Sensor cable should not pass through plastic mounting washer.

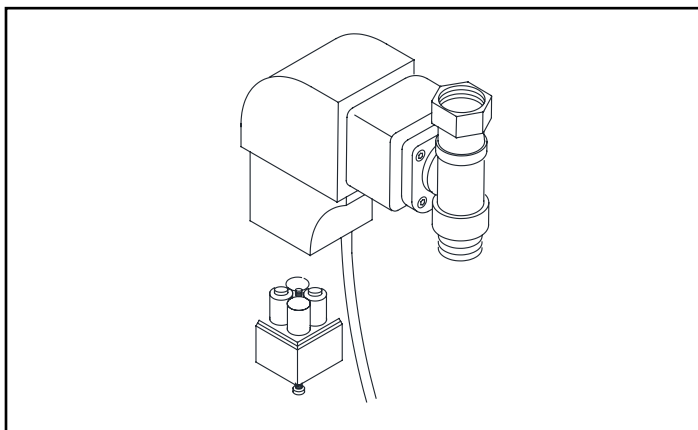


Electronics Module Installation Instructions

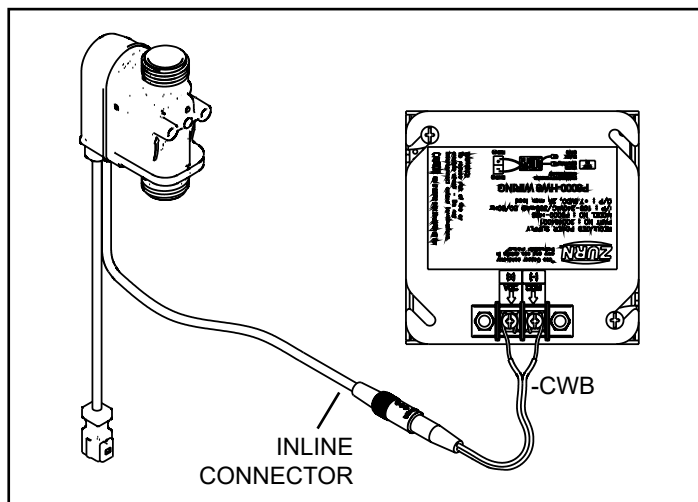
1. Assemble the electronics module



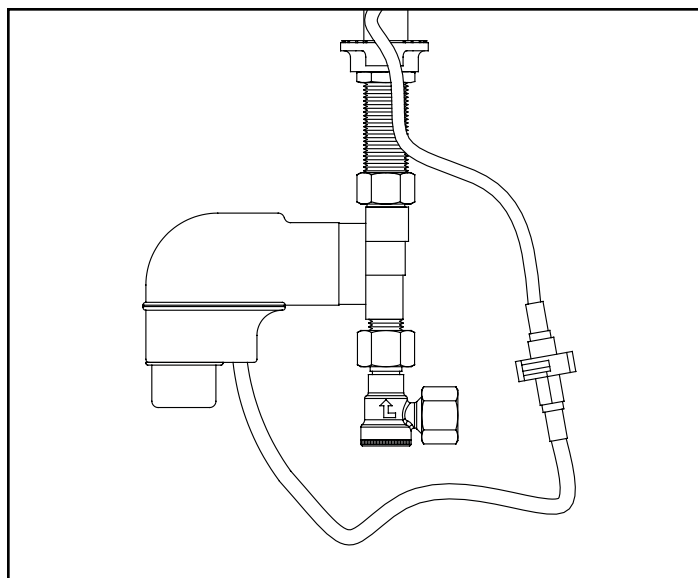
3. Open battery module using supplied Allen wrench and install supplied batteries in the electronics module.



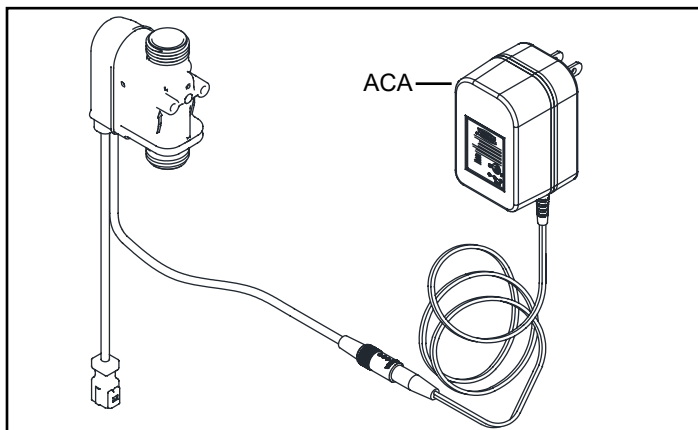
3b. Optional HW6 (Hardwired 6V) version: Connect supplied inline connector and hardwire adapter. When securing the CWB wires to the screw terminals on HW6 unit, the BLACK WITH DASHED MARKINGS should be connected to the Positive (+) terminal, and the SOLID BLACK wire should be connected to the Negative (-) terminal.



2. For battery-powered version, connect sensor inline connector to electronics module.

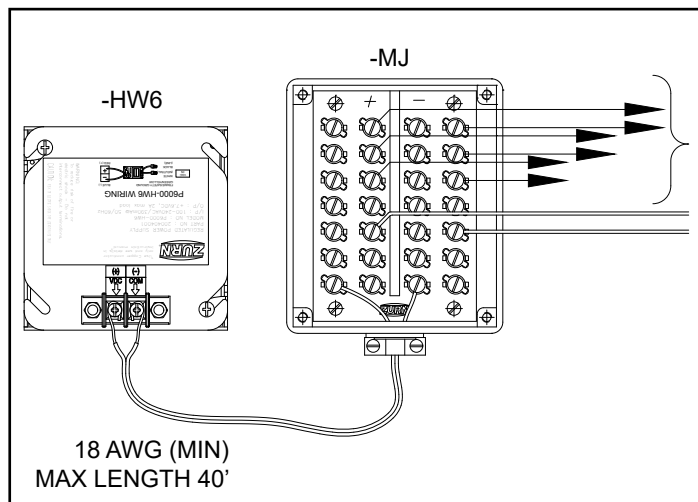


3a. Optional ACA version: Connect supplied inline connector and AC adapter.

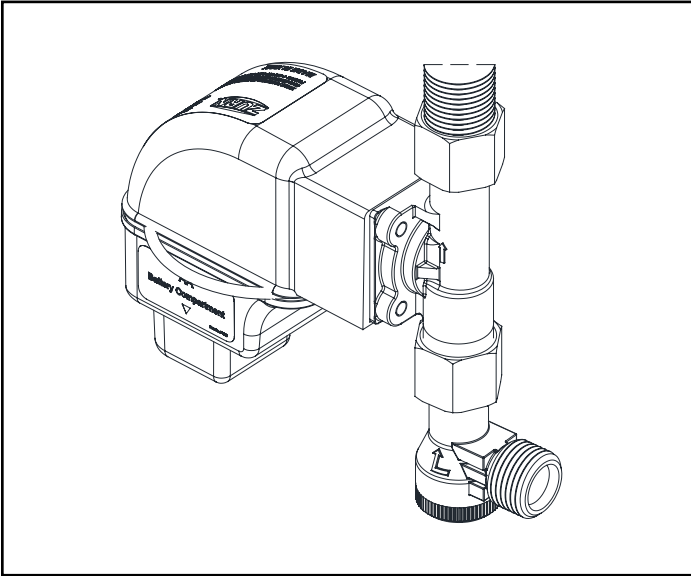


MJ unit (sold separately)

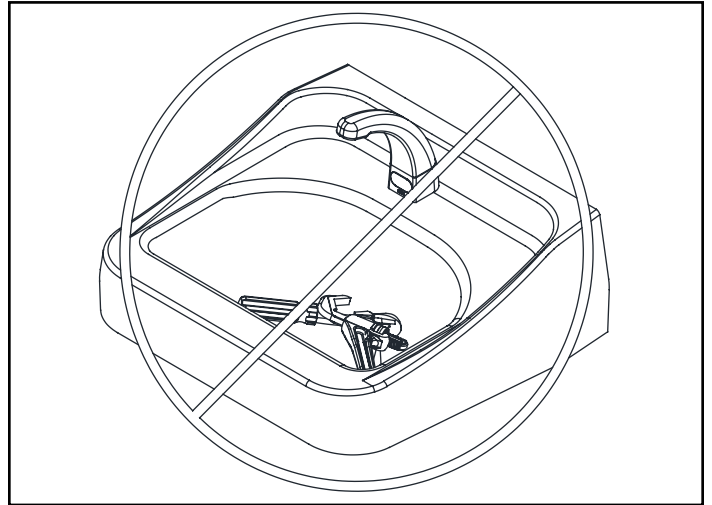
Note: Do not connect more than 8 solenoids to a single transformer



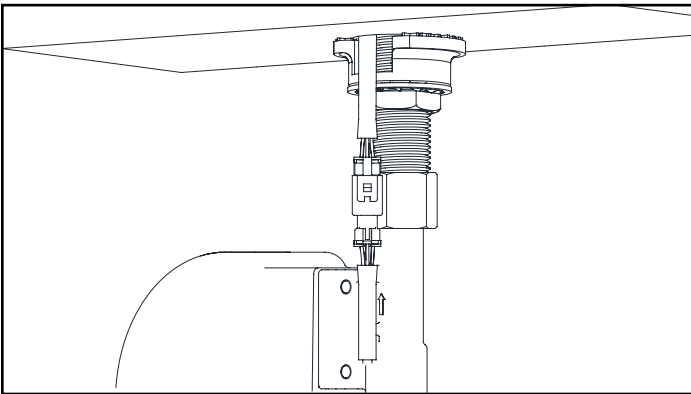
4. Tighten electronics module assembly with hydrogenerator to shank and connect water line(s).




5. Ensure that sink is clear of tools/debris and is in normal operating condition.
6. Turn on water supply(ies). Water supply must be turned on in order for sensor to perform wet calibration step.



7. Connect sensor inline connector to sensor cable from spout.



 **Do not engage the sensor for 30 seconds after the connection is made. The sensor will perform automatic calibration.**

TROUBLESHOOTING GUIDE:

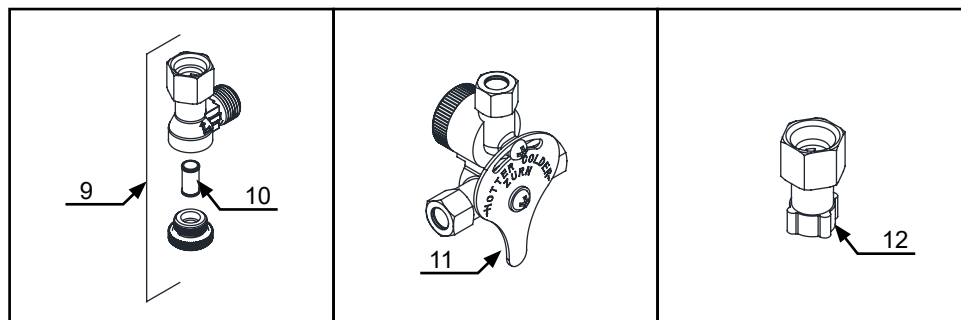
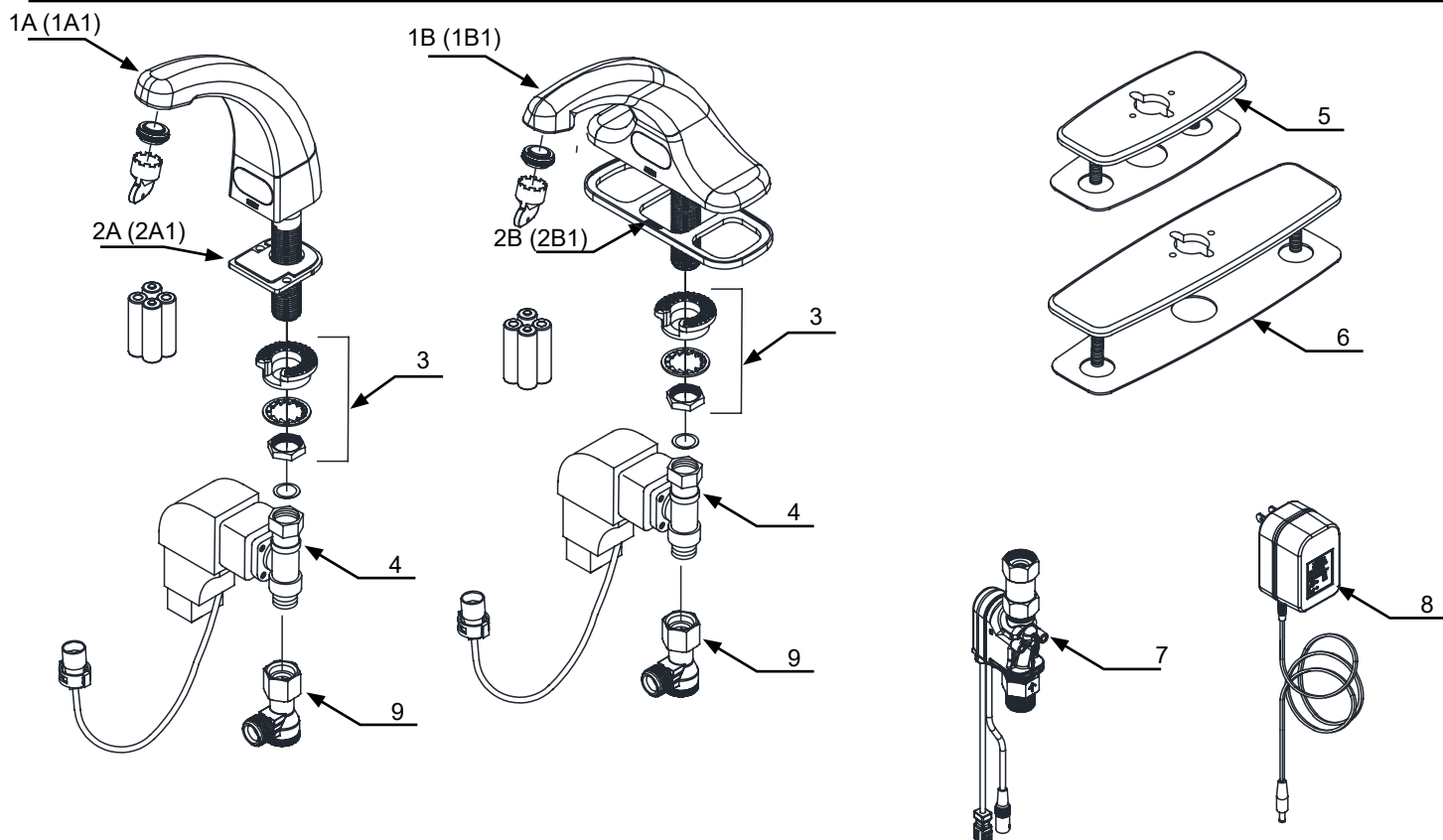
POTENTIAL SITUATIONS	POSSIBLE CAUSES	SUGGESTED SOLUTION TIPS
Faucet is non-responsive	Battery voltage low or no power.	Change out batteries or verify power provided by HW6 or ACA
	Sensor and electronic connector cable has bent or broken pins.	Check to see if pins are missing, bent, or broken. If yes, then the electronic box needs replaced
	Sensor lens could have surface damage, scratches, or deposit build ups.	Inspect the sensor lens. May require cleaning with a damp cloth or sensor replacement.
Faucet does not activate after initial installation	Sensor may not have had enough time to calibrate prior to a user or target trying to initiate activation.	Disconnect the sensor and electronic box cables and wait for 30 seconds. Reconnect the cables, but allow for another 30 seconds before placing hands or a target within the sensor range. You should hear a click of the solenoid once calibration is complete.
	Check if protective film was removed from lens.	
Water does not stop	Electronics box cable connector has bent pins that are shorted	Check to see if pins are missing, bent, or broken. If yes, then the electronic box needs replaced.
Ghost Activation	Sensor lens could be obstructed or environmental factors such as high reflective surfaces and/or bright sunlight conditions.	Check/clean sensor lens of any debris or buildup. Adjust lighting conditions if sunlight or IR interference is a factor.
"Sensor faucet is leaking underneath the sink or counter"	Mounting hardware is not tightened sufficiently (faucet shank, electronic box, supply hoses, etc)	Check and ensure the nuts and joints are tight and secure from the supply stop all the way to the faucet shank.
	Missing the washer located in the solenoid box nut where it assembles to the faucet shank.	Make sure the water supply stops are shut off. Check to ensure the washer is installed or damaged. If not, install washer. If a washer is damaged, replace with new.

For further assistance with troubleshooting visit <http://www.zurn.com>

Care and Cleaning Instructions:

- Do not use any abrasive or chemical cleaners to clean the faucets.
- If abrasives or chemicals are used it can lead to dulling of luster, attacking of chrome plating or decorative finishes.
- ONLY use mildly warm soapy water, and then wipe the device dry with a clean/soft towel or cloth.
- Upon cleaning other areas of the restroom be sure the sensor lenses are protected from other cleaning chemicals/solvents to prevent potential damages to the sensor and/or electronics.

Z6913-XL & Z6915-XL Parts List



Description	Product No.
Z6913 Spout Assembly with Sensor, Item 1A	P6913-XL-1
Z6913 Spout Assembly with Gen III Sensor Assembly, Item 1A1 (Use ONLY for ACA/CWB skus with Ceramic Valve)	P6913-XL-2
Z6915 Spout Assembly with Sensor, Item 1B	P6915-XL-1
Z6915 Spout Assembly with Gen III Sensor Assembly, Item 2A1 (Use ONLY for ACA/CWB skus with Ceramic Valve)	P6915-XL-2
Z6913 Base Plate Gasket, Item 2A	P6913-42
Z6913 Base Plate Gasket, Item 2A1 (Use ONLY with P6913-XL-2)	P6913-42-WEDGE

Description	Product No.
Z6915 Base Plate Gasket, Item 2B	P6915-42
Z6915 Base Plate Gasket, Item 2B1 (Use ONLY with P6913-XL-2)	P6915-42-WEDGE
Mounting Kit, Item 3	P6900-43
Electronics Box with Solenoid, Item 4	P6900-B-L
4" Cast Cover Plate w/Gasket, Item 5	P6900-CP4
8" Cast Cover Plate w/Gasket, Item 6	P6900-CP8
Ceramic Valve Assembly, Item 7	P6900-XL-CV-B-L
Plug-in Power Converter, Item 8	P6900-ACA
Filter Kit, Item 9	P6900-120BC
Filter Screen, Item 10	P6900-MV-7
Mixing Valve with Filter, Item 11	P6900-XL-MV
Composite Mixing Valve Adapter, Item 12	P6900-MV-ADAP

This Page Intentionally Left Blank

This Page Intentionally Left Blank

