

### Features

- Customizable farmhouse apron lets you choose a design to complement kitchen decor.
- Match the farmhouse apron with your countertop/backsplash material or select a KOHLER insert.
- Inserts are changeable.
- Patented Tailor™ carrier bracket system makes for simple and secure insert installation.
- Fits minimum 36" (914 mm) apron sink base cabinet.
- Single large bowl.
- 9" (229 mm) depth provides generous workspace.
- Self-Trimming® apron overlaps the cabinet face for easy installation.
- Rear drain increases workspace in the sink and storage space underneath.
- SilentShield® sound-absorption technology offers quieter performance.
- Rounded 0.39" (10mm) corners are easy to clean.

### Material

- 16-gauge basin and 4-gauge apron.
- Handcrafted from premium stainless steel.

### Installation

- No faucet holes.
- Undermount.
- Carrier has adjustability to ensure insert is centered.
- Apron is designed to accommodate traditional countertop material thicknesses of 1.18" (3cm) or less.

### Required Products/Accessories

For apron-front installation

K-22573 Etched Stone insert

or

K-22574 Carved Stone insert

or

K-22572 Flora insert

### Recommended Products/Accessories

K-8801 Sink Strainer

K-8799 Sink Strainer

K-23726 Drain treatment

K-23729 Stainless steel cleaner

### Optional Products/Accessories

K-22578 34-3/4" tile frame

K-11352 Disposal Flange with Stopper

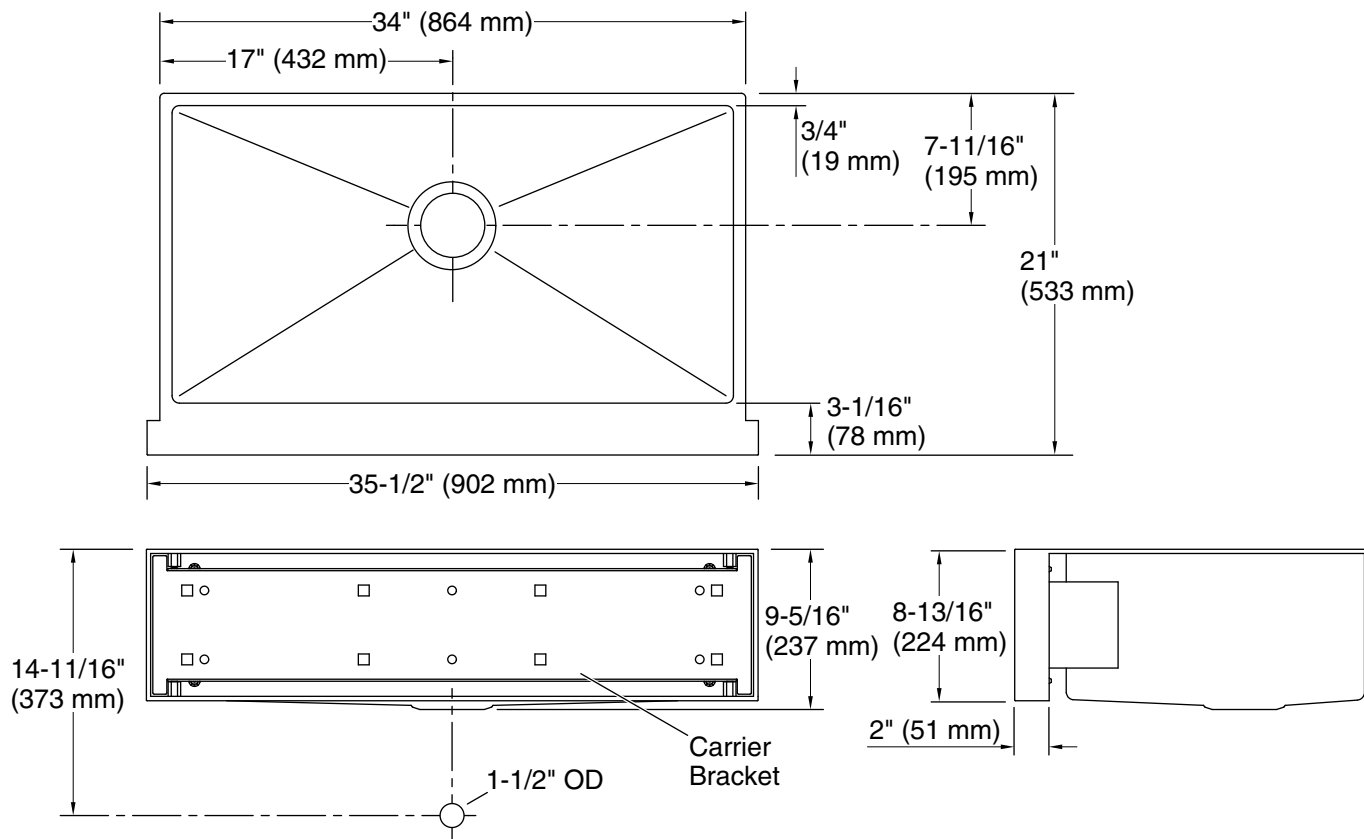


### Codes/Standards

ASME A112.19.3/CSA B45.4

### Lifetime Limited Warranty for KOHLER® Stainless Steel Sinks

See website for detailed warranty information.



## Technical Information

All product dimensions are nominal.

Installation: Under-mount

Min. base cabinet width: 36" (914 mm)

Bowl area (Only): Length: 32-1/2" (826 mm)

Width: 17-3/16" (437 mm)

Bowl depth: 9" (229 mm)

Water depth: 9" (229 mm)

Drain hole: 3-3/4" (94 mm)

Template: Apron-front, 1224194-7, required, included  
1358496-7, not required, included

## Notes

Install this product according to the installation instructions.

Allow a minimum of 3" (76 mm) clearance for the back 3/4" (19 mm) sink rim flange for clip attachment.

The 3/4" (19 mm) side rim flanges are supported without using the clip attachment. See the installation guide for further instructions.