



Fantech PRV Shell Program

Fulfill Customer Demand... On-Demand



Make the most of your space

Existing buildings across the US have one thing in common... aging and failing equipment, which include millions of Powered Roof Ventilators (PRVs). A large fan distributor sold over \$40m USD in replacement fans last year alone! These are customers who know this distributor carries the breadth of the CFM/Size Range and he does not mind paying a higher price to GET IT NOW. That customer will almost certainly buy additional product while they are at the location picking up this fan solution. This represents more sales than just the \$40m lost to the competitor on fans.

As a distributor striving to meet the demands of your customer base, it would be improbable to inventory every conceivable fan combination for the replacement market. How do you combat lost sales to your competitor while keeping inventory costs low and warehouse floor space free?

The Fantech **Shell program** allows you to react to the fast turnaround time in the replacement market by providing the replacement fan in exactly the package the customer is now accustomed: 3 components - Shell, Motor and Drive Pack Combo. The choice is up to you: mix and match any combination to fit your market and your customer's needs.

Illustrated in this brochure, are recommended Shell, Drive pack and Motor combinations that yield roughly a 4:1 ratio in Fan combinations versus actual Product inventoried and floor space needed.

ONE multiple motors
Shell multiple sheaves
multiple belts

Simply stated, Fantech makes it easy to
become the PRV solution provider in your market



Fantech Inc. certifies that the Belt-Drive Upblast Centrifugal Roof Ventilators shown herein are licensed to bear the AMCA seal. The rating shown are based on tests and procedures in accordance with AMCA Publication 212 and AMCA Publication 311 and comply with the requirements of the AMCA Certified Ratings Program.

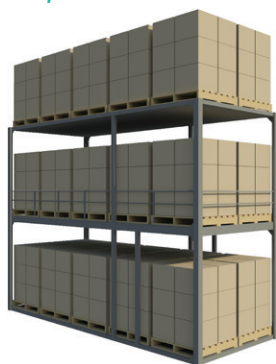
BDD and BDU Ventilators are UL Standard 705 listed, BDU Ventilators are UL Standard 762 (Subject YZHW) listed, when sold complete with motor and variable pitch drive specified by Fantech Inc.

Stock **less** sell **more**

Your investment in inventory costs you not only outlay of cash, but also valuable floor space. Listed below are the actual List Pricing and Cubic Footage space comparisons. On the left is the investment to stock the 32 Assembled PRVs. On the right is the more versatile and economical Fantech Shell Program version.

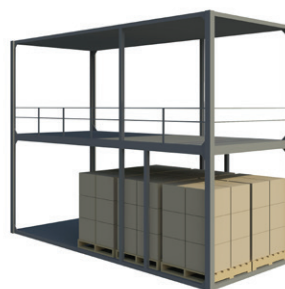
GOOD Solution:
32 combos, 5 shells

1920 ft³
\$38,910



Old PRV Inventory

398 ft³
\$10,253



Shell PRV Inventory

32 combos



5 shell options

11 motor options



22 drive pack options

Suggested Packages

Upblast (U) & Downblast (D) Shells

Model Name	5BDU12	5BDU15	5BDU18	5BDD12	5BDD24
Suggested Quantity	2	2	1	4	1
CFM Range	1314-1530	1782-3094	2489-5023	1383-1611	3877-7839

Motors

Motor Size	BB	CB	DB	DX	EB	EX	FB	FX	GB	GX	HX
HP	1/4	1/3	1/2	1/2	3/4	3/4	1	1	1 1/2	1 1/2	2
Suggested Quantity	1	1	1	1	1	1	1	1	1	1	1

Drive Packs

Fan Size	12	12	15	15	15	15	15	15	18	18	18
Motor Size	BB	CB	BB	CB	DB	DX	EB/EX	FB/FX	CB	DB	DX
Suggested Quantity	1	1	1	1	1	1	1	1	1	1	1

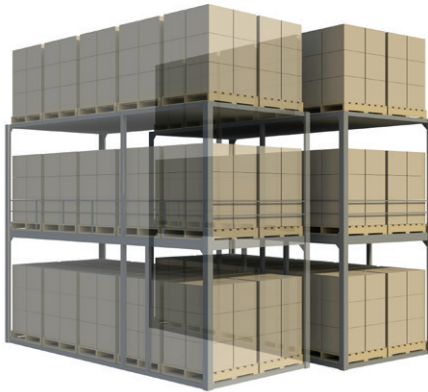
Fan Size	18	18	18	18	24	24	24	24	24	24	24
Motor Size	EB/EX	FB/FX	GB/GX	HX	CB	DB	DX	EB/EX	FB/FX	GB/GX	HX
Suggested Quantity	1	1	1	1	1	1	1	1	1	1	1

Stock **less** sell **even more**

BETTER Solution: 69 combos, 12 shells

Does your market demand a broader range of fans be available on short notice? Simply add more shells, motors and drive packs to fill in the gaps. Below, Fantech demonstrates a “Better” package that highlights the power of doing more with less!

3816 ft³
\$80,925



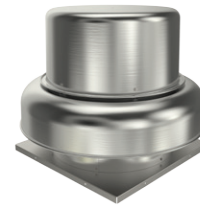
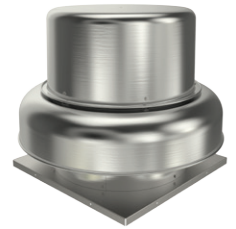
Old PRV Inventory

701 ft³
\$15,852



Shell PRV Inventory

69 combos



12 shell options

11 motor options



39 drive pack options

Suggested Packages

Upblast (U) & Downblast (D) Shells

Model Name	5BDU10	5BDU12	5BDU13	5BDU15	5BDU16	5BDU18	5BDD10	5BDD12	5BDD13	5BDD18	5BDD20	5BDD24
Suggested Quantity	1	2	1	2	1	1	1	4	1	1	1	1
CFM Range	941-1179	1314-1530	1608-2188	1782-3094	2270-3674	2489-5023	955-1197	1383-1611	1549-2106	2700-5448	3025-6060	3877-7839

Motors

Fan Size	BB	CB	DB	DX	EB	EX	FB	FX	GB	GX	HX
Motor Size	1/4	1/3	1/2	1/2	3/4	3/4	1	1	1 1/2	1 1/2	2
Suggested Quantity	1	2	1	2	1	1	1	4	1	1	1

Drive Packs

Fan Size	10	12	12	13	13	13	13	15	15	15	15	15	15	15	16	16	16	16	16	18
Motor Size	BB	BB	CB	BB	CB	DB	DX	BB	CB	DB	DX	EB/EX	FB/FX	CB	DB	DX	EB/EX	FB/FX	CB	
Suggested Quantity	1	1	1	1	1	1	1	1	1	1	1	1	1	1	1	1	1	1	1	1

Fan Size	18	18	18	18	18	18	20	20	20	20	20	20	20	24	24	24	24	24	24	24
Motor Size	DB	DX	EB/EX	FB/FX	GB/GX	HX	CB	DB	DX	EB/EX	FB/EX	GB/GX	HX	CB	DB	DX	EB/EX	FB/FX	GB/GX	
Suggested Quantity	1	1	1	1	1	1	1	1	1	1	1	1	1	1	1	1	1	1	1	1

5BDU Series

Upblast Roof Ventilator Components

Model	Shipping weight, lbs	HP	1 Phase for Fans Less Motor and Drive		3 Phase for Fans Less Motor and Drive	
			Drive Pack ID	Motor ID	Drive Pack ID	Motor ID
5BDU10	90	1/4	DP-10"-BB	MOT BB		
5BDU12	100	1/4	DP-12"-BB	MOT BB		
		1/3	DP-12"-CB	MOT CB		
5BDU13	105	1/4	DP-13"-BB	MOT BB		
		1/3	DP-13"-CB	MOT CB		
		1/2	DP-13"-DB	MOT DB	DP-13"-DX	MOT DX
5BDU15	120	1/4	DP-15"-BB	MOT BB		
		1/3	DP-15"-CB	MOT CB		
		1/2	DP-15"-DB	MOT DB	DP-15"-DX	MOT DX
		3/4	DP-15"-EB/EX	MOT EB	DP-15"-EB/EX	MOT EX
		1	DP-15"-FB/FX	MOT FB	DP-15"-FB/FX	MOT FX
5BDU16	125	1/3	DP-16"-CB	MOT CB		
		1/2	DP-16"-DB	MOT DB	DP-16"-DX	MOT DX
		3/4	DP-16"-EB/EX	MOT EB	DP-16"-EB/EX	MOT EX
		1	DP-16"-FB/FX	MOT FB	DP-16"-FB/FX	MOT FX
5BDU18	171	1/3	DP-18"-CB	MOT CB		
		1/2	DP-18"-DB	MOT DB	DP-18"-DX	MOT DX
		3/4	DP-18"-EB/EX	MOT EB	DP-18"-EB/EX	MOT EX
		1	DP-18"-FB/FX	MOT FB	DP-18"-FB/FX	MOT FX
		1-1/2	DP-18"-GB	MOT GB	DP-18"-GX	MOT GX
		2			DP-18"-HX	MOT HX
5BDU20	173	1/3	DP-20"-CB	MOT CB		
		1/2	DP-20"-DB	MOT DB	DP-20"-DX	MOT DX
		3/4	DP-20"-EB/EX	MOT EB	DP-20"-EB/EX	MOT EX
		1	DP-20"-FB/FX	MOT FB	DP-20"-FB/FX	MOT FX
		1-1/2	DP-20"-GB/GX	MOT GB	DP-20"-GB/GX	MOT GX
		2			DP-20"-HX	MOT HX
5BDU24	205	1/3	DP-24"-CB	MOT CB		
		1/2	DP-24"-DB	MOT DB	DP-24"-DX	MOT DX
		3/4	DP-24"-EB/EX	MOT EB	DP-24"-EB/EX	MOT EX
		1	DP-24"-FB/FX	MOT FB	DP-24"-FB/FX	MOT FX
		1-1/2	DP-24"-GB/GX	MOT GB	DP-24"-GB/GX	MOT GX
		2			DP-24"-HX	MOT HX
5BDU30	305	1/2	DP-30"-DB	MOT DB	DP-30"-DX	MOT DX
		3/4	DP-30"-EB/EX	MOT EB	DP-30"-EB/EX	MOT EX
		1	DP-30"-FB/FX	MOT FB	DP-30"-FB/FX	MOT FX
		1-1/2	DP-30"-GB/GX	MOT GB	DP-30"-GB/GX	MOT GX
		2			DP-30"-HX	MOT HX
		3			DP-30"-JX	MOT JX
		5			DP-30"-KX	MOT KX
5BDU36	385	3/4	DP-36"-EB/EX	MOT EB	DP-36"-EB/EX	MOT EX
		1	DP-36"-FB/FX	MOT FB	DP-36"-FB/FX	MOT FX
		1-1/2	DP-36"-GB/GX	MOT GB	DP-36"-GB/GX	MOT GX
		2			DP-36"-HX	MOT HX
		3			DP-36"-JX	MOT JX
		5			49072 0	49920 4

5BDD Series

Downblast Roof Ventilator Components

Model	Shipping weight, lbs	HP	1 Phase for Fans Less Motor and Drive		3 Phase for Fans Less Motor and Drive	
			Drive Pack ID	Motor ID	Drive Pack ID	Motor ID
5BDD10	90	1/4	DP-10"-BB	MOT BB		
5BDD12	100	1/4	DP-12"-BB	MOT BB		
		1/3	DP-12"-CB	MOT CB		
5BDD13	110	1/4	DP-13"-BB	MOT BB		
		1/3	DP-13"-CB	MOT CB		
		1/2	DP-13"-DB	MOT DB	DP-13"-DX	MOT DX
5BDD15	120	1/4	DP-15"-BB	MOT BB		
		1/3	DP-15"-CB	MOT CB		
		1/2	DP-15"-DB	MOT DB	DP-15"-DX	MOT DX
		3/4	DP-15"-EB/EX	MOT EB	DP-15"-EB/EX	MOT EX
		1	DP-15"-FB/FX	MOT FB	DP-15"-FB/FX	MOT FX
5BDD16	130	1/3	DP-16"-CB	MOT CB		
		1/2	DP-16"-DB	MOT DB	DP-16"-DX	MOT DX
		3/4	DP-16"-EB/EX	MOT EB	DP-16"-EB/EX	MOT EX
		1	DP-16"-FB/FX	MOT FB	DP-16"-FB/FX	MOT FX
5BDD18	164	1/3	DP-18"-CB	MOT CB		
		1/2	DP-18"-DB	MOT DB	DP-18"-DX	MOT DX
		3/4	DP-18"-EB/EX	MOT EB	DP-18"-EB/EX	MOT EX
		1	DP-18"-FB/FX	MOT FB	DP-18"-FB/FX	MOT FX
		1-1/2	DP-18"-GB	MOT GB	DP-18"-GX	MOT GX
		2			DP-18"-HX	MOT HX
5BDD20	185	1/3	DP-20"-CB	MOT CB		
		1/2	DP-20"-DB	MOT DB	DP-20"-DX	MOT DX
		3/4	DP-20"-EB/EX	MOT EB	DP-20"-EB/EX	MOT EX
		1	DP-20"-FB/FX	MOT FB	DP-20"-FB/FX	MOT FX
		1-1/2	DP-20"-GB/GX	MOT GB	DP-20"-GB/GX	MOT GX
		2			DP-20"-HX	MOT HX
5BDD24	212	1/3	DP-24"-CB	MOT CB		
		1/2	DP-24"-DB	MOT DB	DP-24"-DX	MOT DX
		3/4	DP-24"-EB/EX	MOT EB	DP-24"-EB/EX	MOT EX
		1	DP-24"-FB/FX	MOT FB	DP-24"-FB/FX	MOT FX
		1-1/2	DP-24"-GB/GX	MOT GB	DP-24"-GB/GX	MOT GX
		2			DP-24"-HX	MOT HX
5BDD30	310	1/2	DP-30"-DB	MOT DB	DP-30"-DX	MOT DX
		3/4	DP-30"-EB/EX	MOT EB	DP-30"-EB/EX	MOT EX
		1	DP-30"-FB/FX	MOT FB	DP-30"-FB/FX	MOT FX
		1-1/2	DP-30"-GB/GX	MOT GB	DP-30"-GB/GX	MOT GX
		2			DP-30"-HX	MOT HX
		3			DP-30"-JX	MOT JX
		5			DP-30"-KX	MOT KX
5BDD36	380	3/4	DP-36"-EB/EX	MOT EB	DP-36"-EB/EX	MOT EX
		1	DP-36"-FB/FX	MOT FB	DP-36"-FB/FX	MOT FX
		1-1/2	DP-36"-GB/GX	MOT GB	DP-36"-GB/GX	MOT GX
		2			DP-36"-HX	MOT HX
		3			DP-36"-JX	MOT JX
		5			DP-36"-KX	MOT KX

Accessories

5ACC..GC

Grease Collector

The grease collector box manufactured from heavy gauge galvanized steel. It fastens to a ventilator base. Easy to remove for cleaning. Diverts and traps heavy residual grease while protecting roof surface. Available in 2 sizes. Class 1.



Specification Data

Model 8" / 12"	Fan Size	Length, inch	Width, inch	Weight, lbs	Item #
5ACC00GC	10 - 13	14	5	4	47178
5ACC01GC	15 - 36	24	7	12	47180

5ACC..VC

Fixed Ventilated Curb

Manufactured from galvanized steel. The curb features stamped louvers on curb sides that provide ventilation to hot exhaust ducts to protect building and roof members. Self-flashing design incorporates flat mounting flange for fastening directly to the roof deck.



Specification Data

Model	Fan Size	Curb Height, inch	Weight, lbs	Item #
5ACC17VC	10	24	38	47208
5ACC20VC	12, 13	24	38	47213
5ACC24VC	15, 16	24	47	47941
5ACC28VC	18, 20	24	54	47222
5ACC32VC	24	24	52	47227
5ACC40VC	30	18	63	47901
5ACC44VC	36	18	92	47238

5ACC..MS

Motor Disconnect Switch (NEMA)

Provides manual "On-Off" control of single or three phase AC motors where overload protection is not required or is provided separately.



Specification Data

Model	Voltage, V	Current, A	Poles	Max HP	Weight, lbs	Item #
5ACC01MS	115/230/460	30	2	3	1	47182
5ACC02MS	208/230/460	30	3	10	1	47183

5ACC..FS, 5ACC..FT

Fixed Non-Ventilated Curb

Manufactured from heavy gauge galvanized steel. Corners are welded construction. The curb features fiber-glass insulation that deadens sound and minimizes heat loss. The unit equipped with shutter flanges and 1 1/2". Class 2.



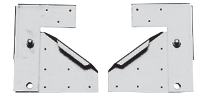
Specification Data

Model 8" / 12"	Fan Size	Weight, lbs	Item #
5ACC17FS / 5ACC17FT	10	24 / 29	47206 / 47207
5ACC20FS / 5ACC20FT	12, 13	28 / 33	47212 / 47213
5ACC24FS / 5ACC24FT	15, 16	33 / 38	47217 / 47941
5ACC28FS / 5ACC28FT	18, 20	40 / 48	47221 / 47222
5ACC32FS / 5ACC32FT	24	46 / 53	47226 / 47227
5ACC40FS / 5ACC40FT	30	57 / 68	47233 / 47901
5ACC44FS / 5ACC44FT	36	68 / 73	47237 / 47238

5ACC..HK

Hinge Kit

Model 5ACC00HK suitable for 10-20 and model 5ACC01HK suitable for 24- 36. Allows entire fan to swing away for access to the wheel and ductwork.



Specification Data

Model	Fan Size	Weight, lbs	Item #
5ACC00HK	10 - 20	4	47179
5ACC01HK	24 - 36	40	47180

5ACC..RD

Roof Mount Damper

Manufactured from 19-gauge galvanized steel frame 2" deep with 1" flange. For quiet operation aluminum blades have felted edges. Pre-punched conduit hole knock-out. Class 1.



Specification Data

Model	Fan Size	Recommended Roof Opening	Outside Flange, inch	Weight, lbs	Item #
5ACC12RD	10	12 1/2 x 12 1/2	12 x 12	3	47196
5ACC15RD	12, 13	15 1/2 x 15 1/2	15 x 15	4	47203
5ACC19RD	15, 16	19 1/2 x 19 1/2	19 x 19	5	47210
5ACC23RD	18, 20	23 1/2 x 23 1/2	23 x 23	9	47215
5ACC27RD	24	27 1/2 x 27 1/2	27 x 27	11	47220
5ACC35RD	30	35 1/2 x 35 1/2	35 x 35	16	47229
5ACC39RD	36	39 1/2 x 39 1/2	39 x 39	21	47232

**Customer Support:**

800.747.1762 • support@fantech.net

**Send Orders:**

orders@fantech.net • 877.747.8116



Keep yourself updated on all news and new products by following us on fantech.net

Fantech reserves the right to modify at any time and without notice, any or all of its products' features, designs, components and specifications to maintain their technological leadership position.



fantech