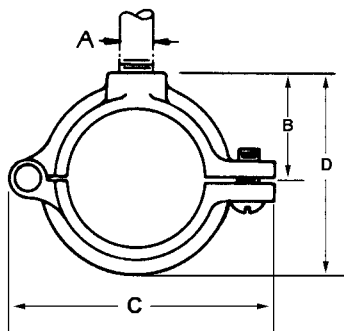


FIG. 41HCT **EPOXY COATED (*COPPER-GARD*)** **COPPER TUBING SPLIT RING EXTENSION HANGER, HINGE DESIGN**



- Material:** Malleable iron.
- Finish:** Copper epoxy coated (*COPPER-GARD*). *COPPER-GARD* products offer superior corrosion protection due to the epoxy coating over electro-galvanized material. The alternative copper plating that has been done historically identifies the product and is not intended for protection. Refer to MSS SP58, 13.3.
- Service:** Designed for the suspension of non-insulated stationary copper tubing, horizontally or vertically.
- Approvals:** Complies with Federal Specification WWH-171-E (Type# 25), A-A-1192A (Type# 12), Manufacturers' Standardization Society SP-58 and MSS SP-69 (Type# 12).
- Ordering:** Specify tube size, and figure number.

TUBE SIZE	TUBE OD	SCREW	A	B	C	D	WGT EACH (lbs)	MAX REC LOAD (lbs)
1/4	0.375	10-24	3/8-16	9/16	1 3/4	7/8	0.073	180
3/8	0.500	10-24	3/8-16	5/8	1 3/4	1 1/16	0.080	180
1/2	0.625	10-24	3/8-16	11/16	1 7/8	1 3/16	0.084	180
3/4	0.875	10-24	3/8-16	13/16	2 5/16	1 7/16	0.106	180
1	1.125	10-24	3/8-16	15/16	2 7/16	1 5/8	0.122	180
1 1/4	1.375	10-24	3/8-16	1 1/16	2 13/16	1 15/16	0.152	180
1 1/2	1.625	10-24	3/8-16	1 3/16	3 1/16	2 3/16	0.172	180
2	2.125	10-24	3/8-16	1 7/16	3 5/8	2 11/16	0.233	180
2 1/2	2.625	1/4-20	1/2-13	1 7/8	4 15/16	2 7/16	0.449	300
3	3.125	1/4-20	1/2-13	2 1/8	5 1/2	4 1/16	0.663	300
4	4.125	1/4-20	1/2-13	2 5/8	6 5/8	5 1/16	0.753	300