



GERBER

www.gerberonline.com

Hinsdale™ 1.28 GPF (4.8 LPF) ErgoHeight™ ADA Elongated Toilet

12" Rough-in

Features:

□ 20-181

- 17" ErgoHeight® ADA Elongated Bowl for added comfort
- Large, 2" fully glazed trapway for clog-free waste removal
- Extra-Large Dual fed siphon jets increases the force of the flush, clearing the bowl effectively
- 3" flush valve for maximum water flow and flushing power
- Gerber Quiet Clean Flush System delivers quiet operation and a spotless, sparkling bowl after each flush
- 1.28 gpf (gallons per flush), save up to 16,500 gallons per year (vs 3.5 gpf toilet)
- WaterSense® certified, High Efficiency Toilet (HET) to save water, energy, and money
- Best-in-Class Fluidmaster 400A Fill Valve for durable, long lasting anti-siphon operation and easy replacement
- Double nut, multi-point tank-to-bowl mounting system for easy tool-free installation
- Toilet seat not included



Technical Information:

Included Components:

- Combination 20-181
- Bowl 21-181
- Tank 28-181

Fixtures:

Configuration	Two-piece, elongated ErgoHeight™
Water per Flush	1.28 gpf (4.8 lpf)
Rough-In	12" (305mm)
Height	31 1/2" (801mm)
Width	14 1/8" (358mm)
Depth	29 3/8" (746mm)
Trapway	2" (51mm)
Large Water Surface	9 3/8" x 7" (238mmx178mm)
Shipping Weight	79 lbs

Accessories: (to be purchased separately)

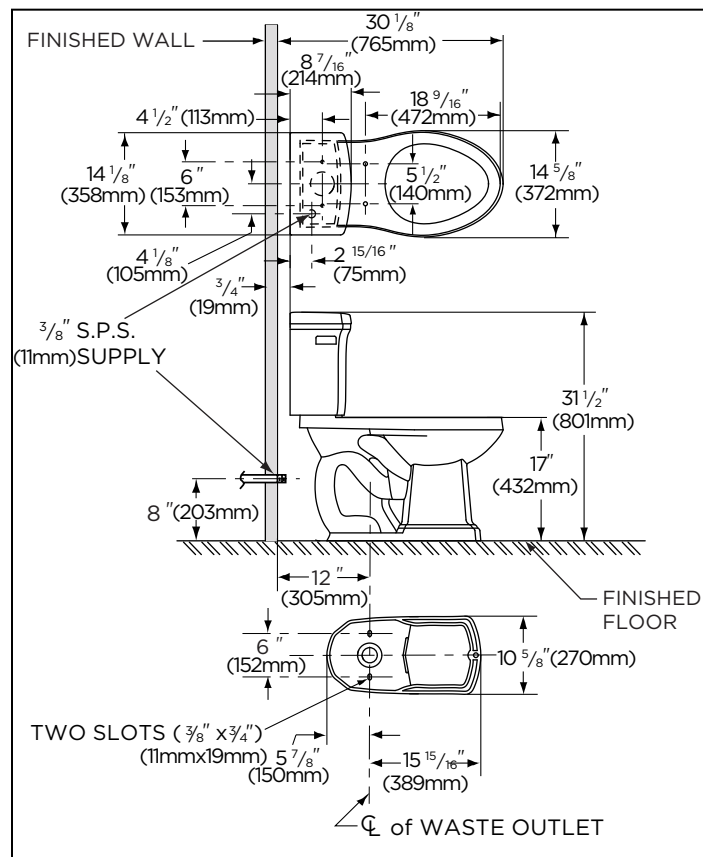
Soft Close Toilet Seat	99-213
------------------------	--------

Colors:

- White

Warranty:

- 10 Year Warranty



NOTES: All dimensions are in inches. Illustrations may not be drawn to scale.

IMPORTANT:

Dimensions of fixtures are nominal and may vary within the range of tolerances established by ASME standard A 112.19.2 THIS FIXTURE QUALIFIES ACCORDING TO ASME TEST PROCEDURES AS A HIGH EFFICIENCY WATER CLOSET WITH AN AVERAGE CONSUMPTION OF 1.28 gpf (4.8 Lpf) OR LESS.