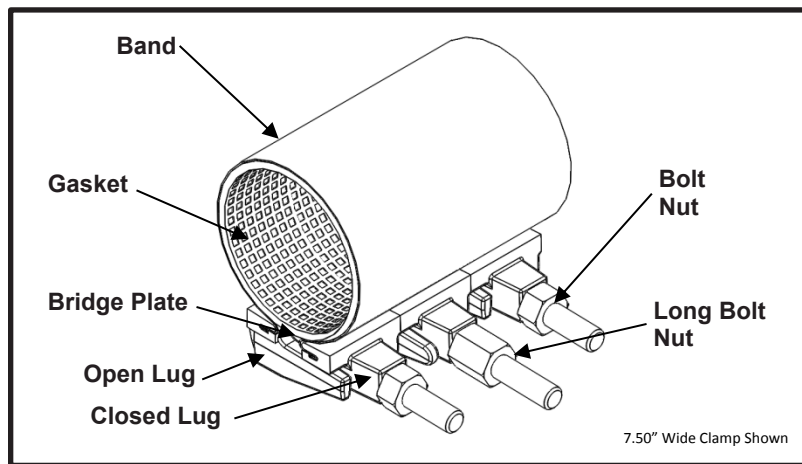


# SPECIFICATION

## FULL CIRCLE® REPAIR CLAMP

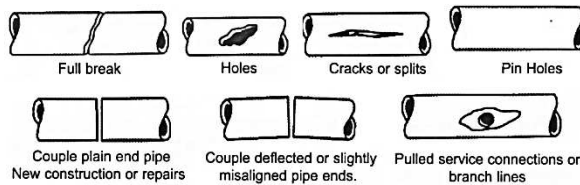
### MODEL 226



#### APPLICATIONS

##### Typical Uses

- Repair leaks due to complete breaks, splits, or holes
- Joining pipes of the same diameter
- Examples:



##### Standard Pipe Sizes

- 2" to 14" nominal

##### Standard Widths

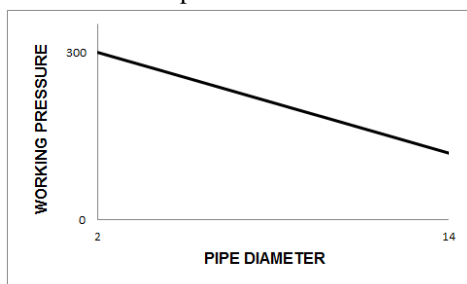
- 7.5", 10.0", 12.5", 15.0", 20.0", 25.0", 30.0"

##### Type of Pipe

- Carbon Steel, Stainless Steel, Ductile Iron, PVC, HDPE DR17 or thicker (with use of spring washers), Asbestos Cement, Copper, Aluminum

##### Working Pressure

- Up to 300 psi depending on type of pipe, type of repair, pipe diameter, service conditions and installation workmanship





# SPECIFICATION

## FULL CIRCLE® REPAIR CLAMP

### MODEL 226

---

#### MATERIALS

- **Band**
  - Type 304 Stainless Steel per ASTM A240
  - Band Thickness: 24 gauge thick for clamps 4.50" diameter and smaller  
20 gauge thick for clamps 4.80" diameter and larger
  - Hemmed ends for lug removal in tight applications
- **Lugs**
  - Cast using Ductile Iron 80-55-06 per ASTM A536
  - Flexi-Coat® fusion bonded epoxy finish
  - Slot cast in lug to capture band hem
  - Designed for drop in replaceable bolts
  - One open loop lug and one closed loop lug. The bolts do not have to be removed to install clamp, preventing lost hardware
  - Long interlocking fingers allow for up to 0.40 inches of range in clamp
  - Interchangeable lugs allow combining smaller diameter clamps to create larger diameter clamps
  - Mutually supporting sliding fingers assures proper bolt alignment and permits maximum clamping without bending bolts
- **Gasket**
  - Nitrile (Buna-N) per ASTM D2000
  - Gasket Thickness: 0.192" thickness for clamps 4.50" diameter and smaller  
0.218" thickness for clamps 4.80" diameter and larger
  - Certified to NSF/ANSI 61-G & 372
  - Compounded to resist water, oil, natural gas, acids, alkalies, most (aliphatic) hydrocarbon fluids, and many other chemicals
  - Temperature range: -20°F to +180°F
  - Full 360° gridded face gasket provides maximum pipe support, reinforcement, and sealing pressure
  - Tapered ends allow for full circumferential sealing
- **Bridge Plate**
  - Type 304 Stainless Steel quarter-hard per ASTM A240
  - Molded and recessed into gasket
  - Preformed for uniform distribution of gasket pressure over the entire pipe circumference
- **Bolts**
  - HSLA Carbon Steel per AWWA C111/A21.11
  - 5/8"-11UNC x 6.00" long, Track Head Oval Neck
  - Fe/Zn coated per ASTM F1941-10
  - Rolled threads for improved physical characteristics, greater thread accuracy, and smooth surface finish
  - Drop in replaceable bolts
- **Long Bolts**
  - HSLA Carbon Steel per AWWA C111/A21.11
  - 5/8"-11UNC x 6.88" long, Track Head Oval Neck
  - Fe/Zn coated per ASTM F1941-10
  - Rolled threads for improved physical characteristics, greater thread accuracy, and smooth surface finish
  - Used on clamps 4.50" diameter and smaller to facilitate the initial clamp installation
  - Drop in replaceable bolts
- **Nuts**
  - HSLA Carbon Steel per AWWA C111/A21.11
  - 5/8"-11UNC, Heavy Hex Semi-Finished
  - Fe/Zn coated per ASTM F1941-10



# SPECIFICATION

## FULL CIRCLE<sup>®</sup> REPAIR CLAMP

### MODEL 226

---

#### ▪ Long Nuts

- HSLA Carbon Steel per AWWA C111/A21.11
- 5/8"-11UNC x 1.00" long, Heavy Hex Semi-Finished
- Fe/Zn coated per ASTM F1941-10
- Used to provide hand tightening during initial clamp installation

#### LISTINGS

- Certified to NSF/ANSI 61-G & 372
- Meets applicable AWWA C230 standards

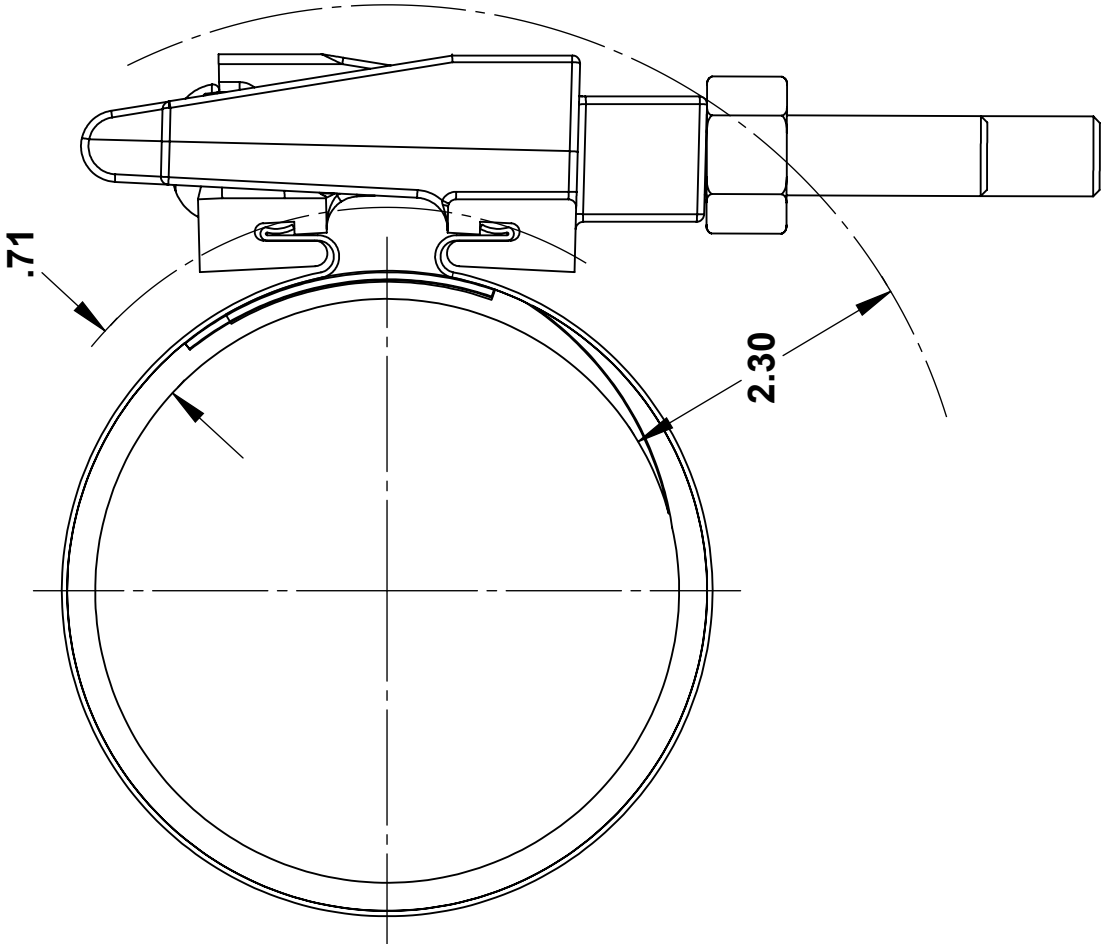
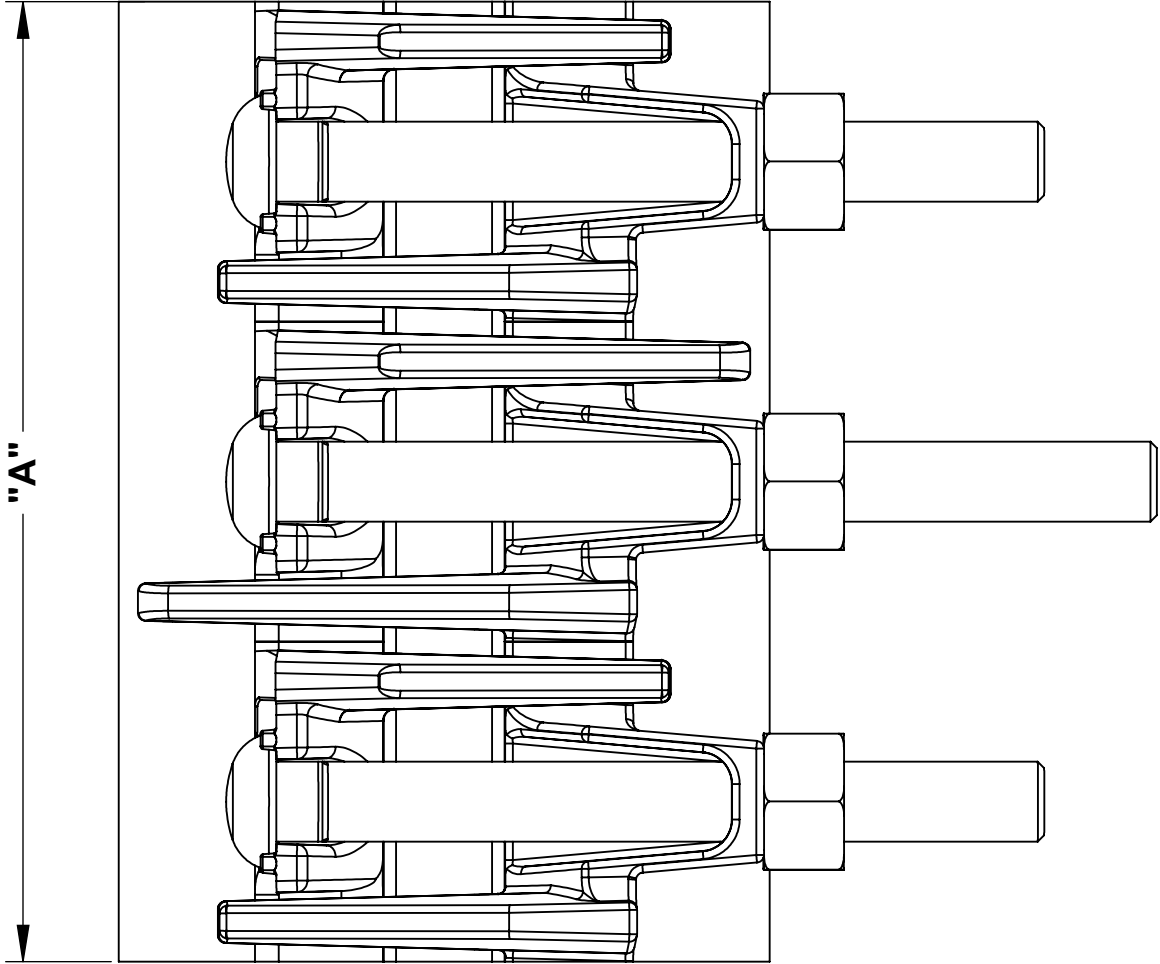
#### OPTIONS

- Type 316 Stainless Steel band
- Type 304 Stainless Steel hardware with fluoropolymer coated nuts to prevent galling
- Type 316 Stainless Steel hardware with fluoropolymer coated nuts to prevent galling
- Alternative gasket material (e.g. Viton, EPDM, etc.)
- Spring washers for use of clamp on HDPE pipe
- Offset gaskets to allow for repairing longer cracks using multiple clamps
- Conductivity feature

#### NOTES

- This product **does not** restrain the pipe from pulling out of the fitting
- Spring washers **are required** when this product is used on DR17 or thicker HDPE pipe (Not recommended for use on HDPE pipe DR 17 or thinner)
- Pipe stiffeners **are required** when this product is used to join HDPE and thin wall PVC pipe
- Full Circle<sup>®</sup> is a registered trademark of Smith-Blair Inc.
- These product specifications were correct at the time of publication and are subject to change without notice
- See the Smith-Blair<sup>®</sup> web site for part numbers and ordering information
- See the Smith-Blair<sup>®</sup> web site for warranty information
- See the Smith-Blair<sup>®</sup> web site for corrosion warnings

30 Globe Ave, Texarkana, AR 71854  
Ph: 870-773-5127 • Fax: 870-773-5212  
Toll-Free Numbers: Ph: 800-643-9705 • Fax: 800-648-6792



NOTES:

1. LONG OVAL NECK BOLTS ONLY PROVIDED ON CLAMPS 4.50" DIAMETER AND SMALLER
2. SEE SMITH-BLAIR CATALOG FOR AVAILABLE PIPE DIAMETER AND WIDTH COMBINATIONS AS SOME COMBINATIONS ARE NOT AVAILABLE
3. 7.50" WIDE CLAMP SHOWN OTHER SIZES SIMILAR

CERTIFIED TO NSF/ANSI 61-G & 372

NOT AVAILABLE								
3. 7.50" WIDE CLAMP SHOWN OTHER SIZES SIMILAR								
A	BOLT QUANTITY			LONG NUT QUANTITY	SOCKET SIZE			
	SHORT	LONG	TOTAL					
7.50	2	1	3	1	1-1/16"			
10.00	2	2	4	2				
12.50	3	2	5	2				
15.00	4	2	6	2				
20.00	8	-	8	3				
25.00	10	-	10	4				
30.00	12	-	12	4				
TOLERANCES U.N.O. XX=+.03 XXX=+.015 FRACTIONS= ANGLES=+1° MACH. FIN=						NOTES: REMOVE BURRS AND SHARP EDGES DO NOT SCALE DWG.	APP'D	DATE
ALL DIMENSIONS ARE IN INCHES.					SCALE: N/A	DRN	CHD	DATE
TITLE					SPECIFICATION FULL CIRCLE® REPAIR CLAMP MODEL 226			
SMITH-BLAIR, Inc. TEXARKANA, ARKANSAS					P/N		N/A	
SPEC_226.DRW					1		2/19/16	
DWG. NO.					1		REV.	