




## Tub and Shower

TRIM ONLY MultiChoice™ Universal Thermostatic shower valve - requires separate order of R10000-UNWS Rough-in

### Model No: T17TH135

#### COMPLIES WITH:

- ASME A112.18.1 / CSA B125.1
-  Indicates compliance to ICC/ANSI A117.1
- Thermostatic Valve ASSE 1016
- Volume Control lever handle ADA compliant to ICC/ANSI A117.1/ADA
- (Contact Delta Representative for State and/or Local Approvals)



#### NOTES:

T17TH2 - MultiChoice™ Universal Thermostatic - Shower Valve & Diverter Spout

T17TH3 - MultiChoice™ Universal Thermostatic - Shower Valve & Diverter Valve

T17TH9 - MultiChoice™ Universal Thermostatic - Shower Valve, Diverter Spout & Diverter Valve

#### SPECIFICATION:

- TempAssure® 17T Thermostatic cartridge
- Thermostatic wax element maintains the outlet temperature to +/- 3.6 F
- Polished chrome plated finish
- Non-removeable red/blue temperature markings
- Cartridge rated minimum 1.7 gpm @45 psi (6.4 L/min @ 310kPa)
- Separate ROUGH-IN – R10000-UNWS required
- Lever volume control, field adjustable to limit rotation into the hot water zone; temperature adjustment dial
- Handle#: 5 - Metal Lever Volume Control Handle w/Temperature Adjustment
- #3 Shower - Touch Clean™ Showerhead, Arm and Flange
- #3 Shower Flow Rate MAX: 2.0 GPM @ 80 PSI (7.6 L/min @ 552 kPa)
- #3 Shower Flow Rate MIN: 1.8 GPM @ 45 PSI (6.8 L/min @ 310 kPa)

#### OPERATION:

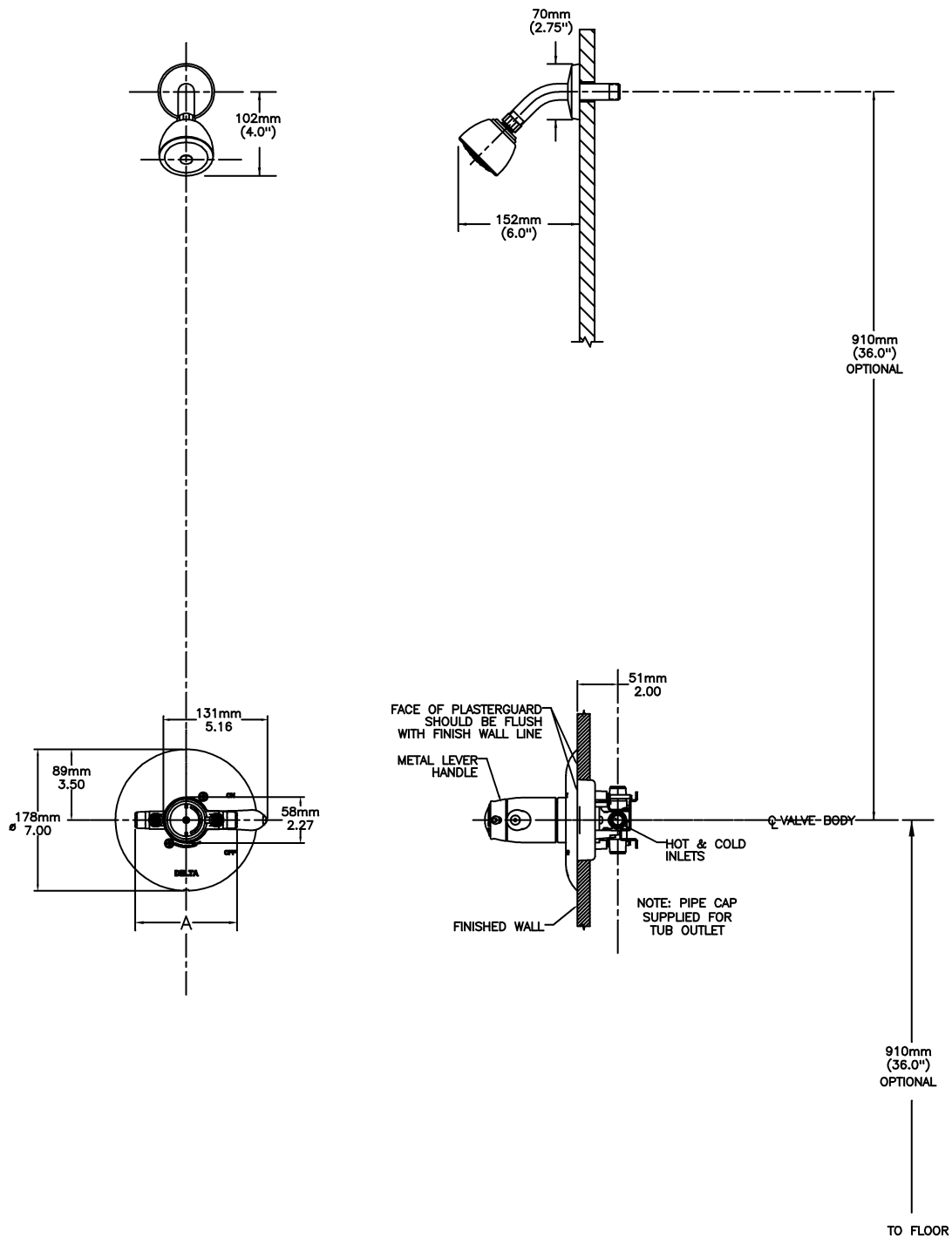
- Not Available

***(Dimensional drawing on following page)***

Delta reserves the right (1) to make changes to specifications and materials, and (2) to change or discontinue models, both without notice or obligation. Dimensions are for reference. Measurement may vary plus or minus 6mm(0.25"). Mounting locations are suggested only. Check with local codes for requirements in your area. This spec was produced February 22, 2018.

Delta Faucet Company - 55 East 111th St. - Indianapolis, Indiana, USA 46280 - (317) 848-1812  
Delta Faucet Canada - 395 Matheson Blvd E - Mississauga, Ontario, Canada L4Z 2H2 - (905) 712-3030

Model No: T17TH135



Delta reserves the right (1) to make changes to specifications and materials, and (2) to change or discontinue models, both without notice or obligation. Dimensions are for reference. Measurement may vary plus or minus 6mm(0.25"). Mounting locations are suggested only. Check with local codes for requirements in your area. This spec was produced February 22, 2018.

Delta Faucet Company - 55 East 111th St. - Indianapolis, Indiana, USA 46280 - (317) 848-1812  
 Delta Faucet Canada - 395 Matheson Blvd E - Mississauga, Ontario, Canada L4Z 2H2 - (905) 712-3030