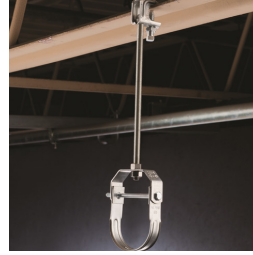
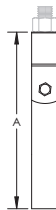
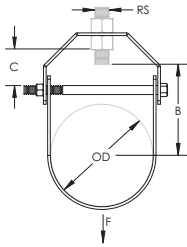


401 Clevis Hanger – 4010800EG



- Recommended for the suspension of stationary non-insulated pipe lines
- Flared edges help prevent sharp surfaces from coming into contact with the pipe (1/2" to 2" pipe sizes)
- Clevis bottom pivots to allow pipe to be fed from either direction
- Conforms with U.S. Federal Specification WW-H-171 (Type 1), Manufacturers Standardization Society (MSS) SP-58 (Type 1)



Part Number	4010800EG
Material	Steel
Finish	Electrogalvanized Pregalvanized
Pipe Size	8"
Outer Diameter (OD)	8 5/8"
Rod Size (RS)	3/4"
A	14"
B	8"
C	3 1/8"
Static Load (F)	2,000 lb
Certifications	cULus FM
Standard Packaging Quantity	10 pc
UPC	78285635765
EAN-13	8711893038194

A shield is recommended for insulated pipe applications to effectively distribute the load.

FM is a registered certification mark of FM Approvals LLC, LTD. UL, UR, cUL, cUR, cULus and cURus are registered certification marks of UL LLC.

WARNING

Pentair products shall be installed and used only as indicated in Pentair's product instruction sheets and training materials. Instruction sheets are available at erico.pentair.com and from your Pentair customer service representative. Improper installation, misuse, misapplication or other failure to completely follow Pentair's instructions and warnings may cause product malfunction, property damage, serious bodily injury and death and/or void your warranty.

© 2018 Pentair. All rights reserved.

Pentair, CADDY, CADWELD, CRITEC, ERICO, ERIFLEX, ERITECH and LENTON are owned by Pentair or its global affiliates.

All other trademarks are the property of their respective owners. Pentair reserves the right to change specifications without prior notice.

