



Top-mount/Under-mount Sink **1411-0**

Features

- Round bowl.
- No faucet holes; requires wall- or counter-mount faucet.
- Mirror finish.
- 5-1/4" bowl depth.
- 13-5/8" (346 mm) diameter.

Material

- 20-gauge stainless steel.

Installation

- Top-mount or under-mount.

Components

Product includes:

1069536 Mounting Hardware for Under-mount Installation



ADA

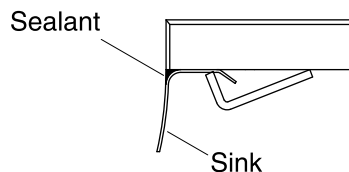
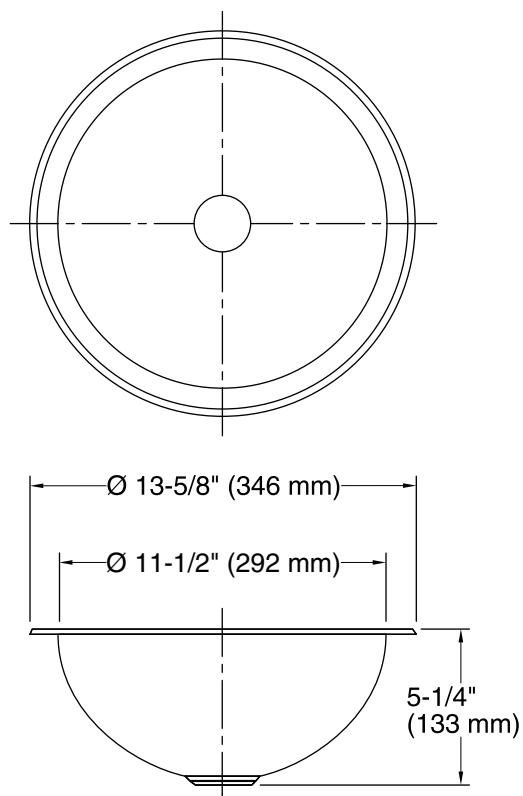
Codes/Standards

ADA

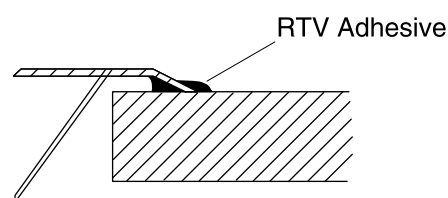
ICC/ANSI A117.1

STERLING® Warranty - Stainless Steel Sinks

See website for detailed warranty information.



Under-mount Installation



Top-mount Installation

Technical Information

All product dimensions are nominal.

Bowl configuration: Single

Installation: Top-mount, Under-mount

Min. base cabinet width: 18" (457 mm)

Bowl area (Only) Length: 11-1/2" (292 mm)
Width: 11-1/2" (292 mm)
Bowl depth: 5-1/4" (133 mm)

Drain hole: 2" (51 mm)

Template: 1033115-7, not required, not included

Notes

Install this product according to the installation instructions.

Measure your actual product for roughing-in details.

ADA compliant when installed to the specific requirements of these regulations.