



Top-mount/Under-mount Sink **1181-0**

Features

- Oval sink design.
- Oval flat rim.
- No faucet holes; requires wall-or counter-mount faucet.
- Mirror finish.
- 13-1/4" (337 mm) x 10-1/2" (267 mm) x 5" (127 mm)

Material

- 20-gauge stainless steel.

Installation

- Top-mount or under-mount.
- Stud mounting (top-mount only).

Components

Product includes:

1069536 Mounting Hardware for Under-mount Installation

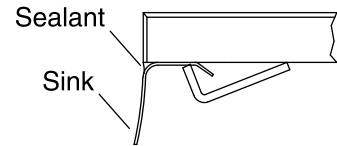
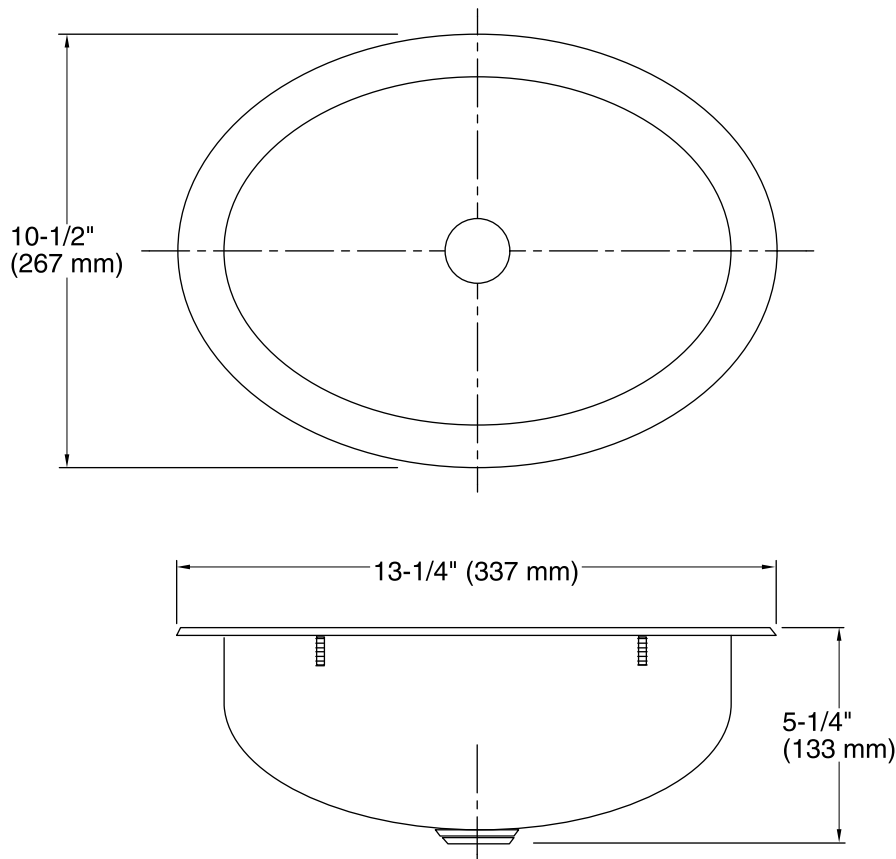


Codes/Standards

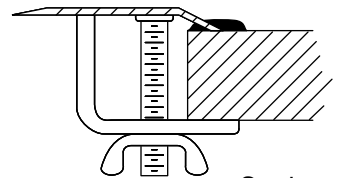
ASME A112.19.3/CSA B45.4

STERLING® Warranty - Stainless Steel Sinks

See website for detailed warranty information.



Under-mount Installation



Stud mounting
provides easy
installation

Top-mount Installation

Technical Information

All product dimensions are nominal.

Bowl configuration:	Single
Installation:	Top-mount, Under-mount
Bowl area	Length: 10-1/2" (267 mm) Diameter: 10-1/2" (267 mm) Bowl depth: 5" (127 mm) Water depth: 5" (127 mm)
Drain hole:	1-3/4" (44 mm)
Template:	1033117-7, not required, included

Notes

Install this product according to the installation instructions.