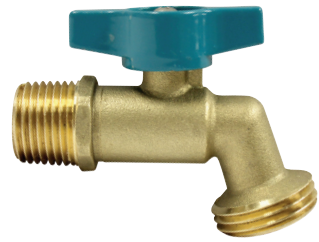


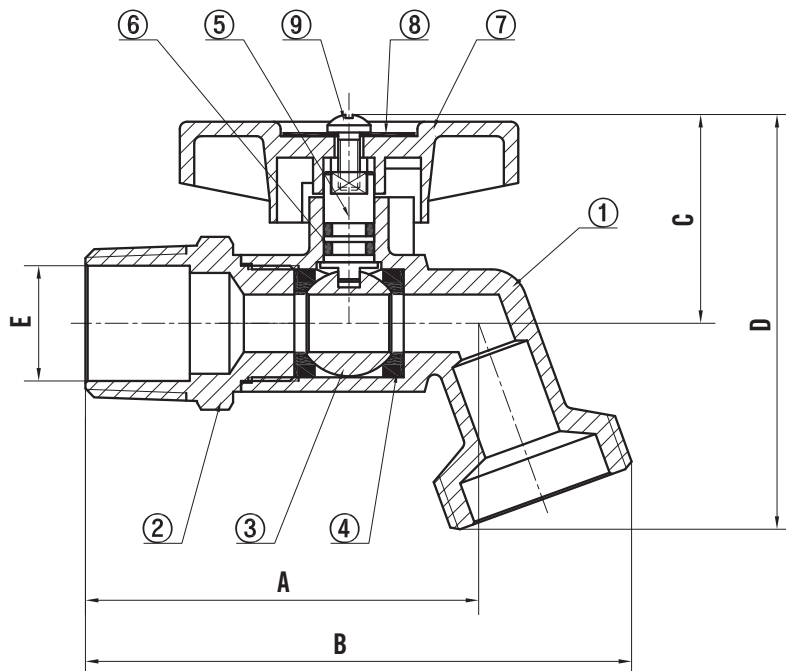
# SUBMITTAL DATA SHEET

## No-Lead Hose Bibb Quarter Turn Ball Valve – 72005QT

FNPT x G.H.T.



A.Y. McDonald Mfg. Co. No-Lead Low Pressure Valves are constructed from heavy duty no-lead brass and are recommended for residential and commercial applications and positive shut-off with various inlet configurations.



### Dimensions

Size	A	B	C	D	E
1/2"	2.15"	3.00"	1.14"	2.27"	0.63"
3/4"	2.46"	3.31"	1.14"	2.27"	0.787"

### Materials

No.	Part	Material
1	Body	No-Lead
2	Bonnet	No-Lead
3	Ball	No-Lead
4	Seat	PTFE
5	Stem	Brass
6	O-Ring	NBR
7	Handle	Aluminum
8	Name Plate	Aluminum
9	Screw	Steel

### SUBMITTAL INFORMATION

- 125 WOG
- Sizes: 1/2", 3/4"
- Complies with NSF/ANSI 372
- NSF / ANSI 61

**NO-LEAD:** The weighted average of the wetted surface of this no-lead product contacted by consumable water contains less than one quarter of one percent (0.25%) lead.



**A.Y. McDonald Mfg. Co.**  
P.O. Box 508  
Dubuque, IA 52004-0508

**Toll Free:** 1-800-292-2737  
**Fax:** 1-800-832-9296  
**Hours:** 7:00 a.m. - 5:00 p.m., CST

[sales@aymcdonald.com](mailto:sales@aymcdonald.com)  
[www.aymcdonald.com](http://www.aymcdonald.com)

A.Y. McDonald considers the information on this assembly drawing correct when published. Item and option availability, including specifications, are subject to change without notice.

**Submitted by:**