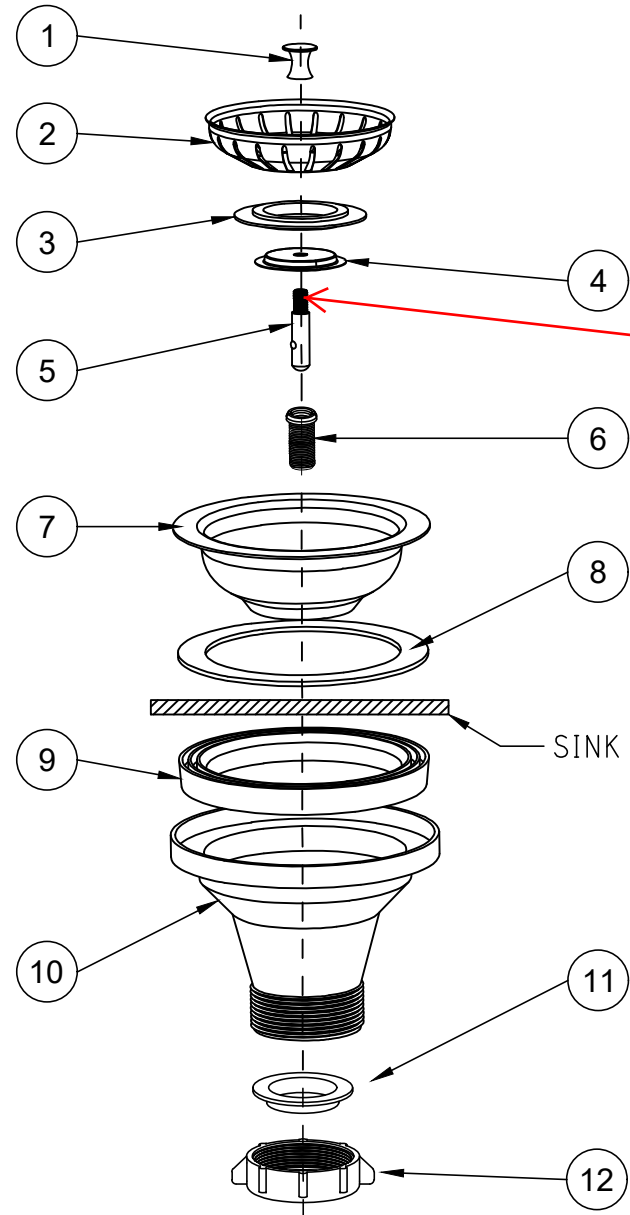


APPLICABLE FOR FINISH 20 ONLY: MAT'L FOR ALLOY COMPONENTS WHICH ARE USUALLY PLATED SHALL BE SS 304. ALL OTHER FINISHES, ALLOY MAT'L SHALL BE BRASS. 5-023 POST MAT'L ALWAYS SS 304.

- 51033
- 51032
- 91717
- 51035
- 5-062
- 51030
- 51029
- 91716
- 91718
- 51038
- 91715
- 51031



APPLY LOCTITE 680

EN-3341

LIST OF MATERIAL				
NO.	DESCRIPTION	MATERIAL	PART	QTY.
1	POP-UP KNOB	SS304	50096	1
2	DRAIN BASKET	SS304	50095	1
3	GASKET - STOPPER	NBR	91129	1
4	FLANGE STOPPER	SS304	50098	1
5	POST ASM	SS304	5-023	1
6	BOLT THRU HOLE	SS304	50092	1
7	DRAIN BASKET BODY	SS304	50090	1
8	FOAM GASKET	FOAM	91128-B	1
9	GASKET FOR HOUSING	NBR	91131	1
10	FLANGE HOUSING	PE	50947	1
11	WASHER-PLASTIC	PE	91127-B	1
12	LOCKNUT/ 1-1/2 PLS	PE	50093	1

DRAIN ASM

Accessory NO.
#122

FACTORY:
Taizhou

TOLERANCES (INCH) :
.X ± 0.04
.XX ± 0.03
.XXX ± 0.02

ANGLES
±1.5°

UNITS: INCH[mm]
SCALE: 1 : 1

MATERIAL:
WEIGHT(g):

DATE: FEB/06/17
SHEET 1 OF 1

BAU
Bean Union Metal Co., Ltd.

REV. C